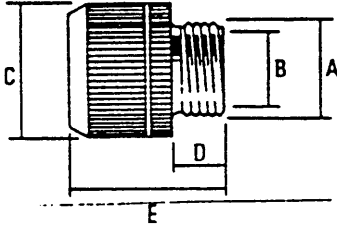


# Connectors for Kopex Covered Pliable Conduits

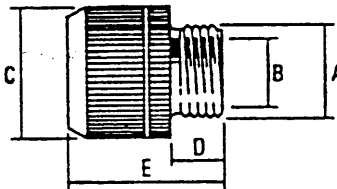
# Technical Data Sheet

C12 WITH METRIC THREADS TO BS 6053  
MATERIAL: ALUMINIUM



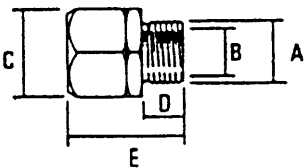
BRITISH CONDUIT SIZE (mm)	THREAD SIZE (mm)	ORDERING CODE	DIMENSIONS (mm)				
			THREAD DIAMETER A	MINIMUM BORE B	DIAMETER C	THREAD LENGTH D	NOMINAL LENGTH E
10	16	BCM0103	16.0	6.5	18.0	10.0	25.5
12	16	BCM0203	16.0	11.5	22.6	11.1	27.0
16	16	BCM0303	16.0	11.5	25.4	11.1	30.0
20	20	BCM0404	20.0	14.3	29.2	11.1	32.0
25	25	BCM0505	25.0	20.6	37.2	12.0	40.0
32	32	BCM0606	32.0	27.0	44.5	14.3	43.0
40	40	BCM0707	40.0	32.8	50.8	16.7	45.2
50	50	BCM0808	50.0	45.5	69.9	22.2	60.3

C12 WITH IMPERIAL THREADS TO BS 31  
MATERIAL: ALUMINIUM



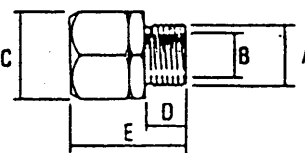
BRITISH CONDUIT SIZE (mm)	THREAD SIZE (Ins)	ORDERING CODE	DIMENSIONS (mm)				
			THREAD DIAMETER A	MINIMUM BORE B	DIAMETER C	THREAD LENGTH D	NOMINAL LENGTH E
12	1/2	BCE0202	12.7	8.8	22.6	12.7	31.6
12	5/8	BCE0203	15.9	11.5	22.6	11.1	28.2
40	1.1/2	BCE0707	38.1	32.8	50.8	16.7	45.2
50	2	BCE0808	50.8	45.5	69.9	22.2	60.3
63	2.1/2	BCE0909	63.5	56.5	82.6	22.2	65.1
75	3	BCE1010	76.2	69.9	101.6	22.2	69.9

C14 WITH METRIC THREADS TO BS 6053  
MATERIAL: ZINC PLATED STEEL



BRITISH CONDUIT SIZE (mm)	THREAD SIZE (mm)	ORDERING CODE	DIMENSIONS (mm)				
			THREAD DIAMETER A	MINIMUM BORE B	A/F C	THREAD LENGTH D	NOMINAL LENGTH E
16	16	BEM0303	16.0	12.0	25.0	12.0	36.0
20	20	BEM0404	20.0	15.0	30.0	14.0	39.0
25	25	BEM0505	25.0	20.9	36.0	17.0	48.0
32	32	BEM0606	32.0	27.0	43.0	19.0	57.0
40	40	BEM0707	40.0	32.8	52.1	15.9	55.4
50	50	BEM0808	50.0	45.5	66.7	22.2	70.8

C14 WITH IMPERIAL THREADS TO BS 31  
MATERIAL: ZINC PLATED STEEL



BRITISH CONDUIT SIZE (mm)	THREAD SIZE (Ins)	ORDERING CODE	DIMENSIONS (mm)				
			THREAD DIAMETER A	MINIMUM BORE B	A/F C	THREAD LENGTH D	NOMINAL LENGTH E
40	1.1/2	BEE0707	38.1	32.8	52.1	15.9	55.4
50	2	BEE0808	50.8	45.5	66.7	22.2	70.8
63	2.1/2	BEE0909	63.5	56.8	81.0	25.4	109.5

SLEEVE	BRITISH CONDUIT SIZE (mm)	ORDERING CODE	END CAP	BRITISH CONDUIT SIZE (mm)	ORDERING CODE
FOR USE WITH C12 AND C14 CONNECTORS. PROVIDES EARTH CONTINUITY AND GREATER PULL-OFF.	12	BXNCS02	FOR INSERTION IN CONDUIT END WHEN USED WITH OR WITHOUT A CONNECTOR. PREVENTS CHAFING.	12	BXNP802
	16	BXNCS03		16	BXNP803
	20	BXNCS04		20	BXNP804
	25	BXNCS05		25	BXNP805
	32	BXNCS06		32	BXNP806
	40	BXNCS07		40	BXNP807
	50	BXNCS08		50	BXNP808

IP RATING WITH KOPEX COVERED PLIABLE CONDUIT

IP67 (NO INGRESS OF TALCUM POWDER UNDER VACUUM)  
(NO INGRESS OF WATER AT 1M DEPTH FOR 30 MINUTES)

OPERATING TEMPERATURE RANGE  
COMPLIANCE WITH STANDARDS

-40 TO +105 DEGREES CELSIUS  
BS731: PART 4  
ACCEPTED BY LLOYDS REGISTER OF  
SHIPPING FOR SUITABLE APPLICATIONS

B10047/1

FITTING INSTRUCTIONS INCLUDED WITH PRODUCT AND AVAILABLE ON REQUEST - LEAFLET No 808856 OR 808858  
THE COMPANY'S POLICY IS ONE OF CONTINUAL IMPROVEMENT AND IT RESERVES THE  
RIGHT TO CHANGE SPECIFICATIONS AT ANY TIME WITHOUT PRIOR NOTICE.