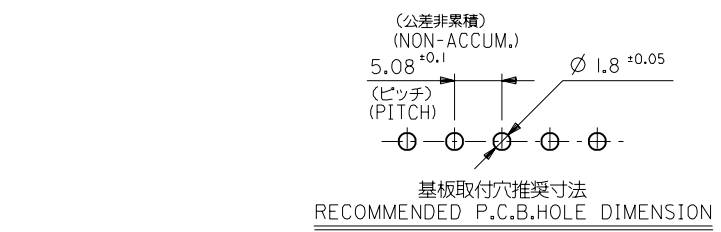
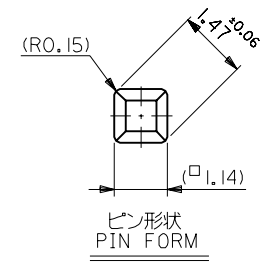
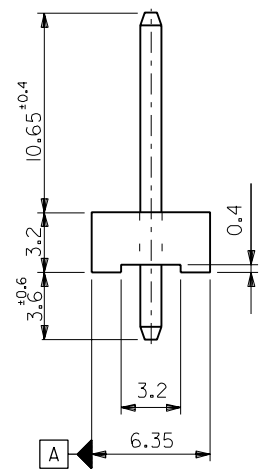
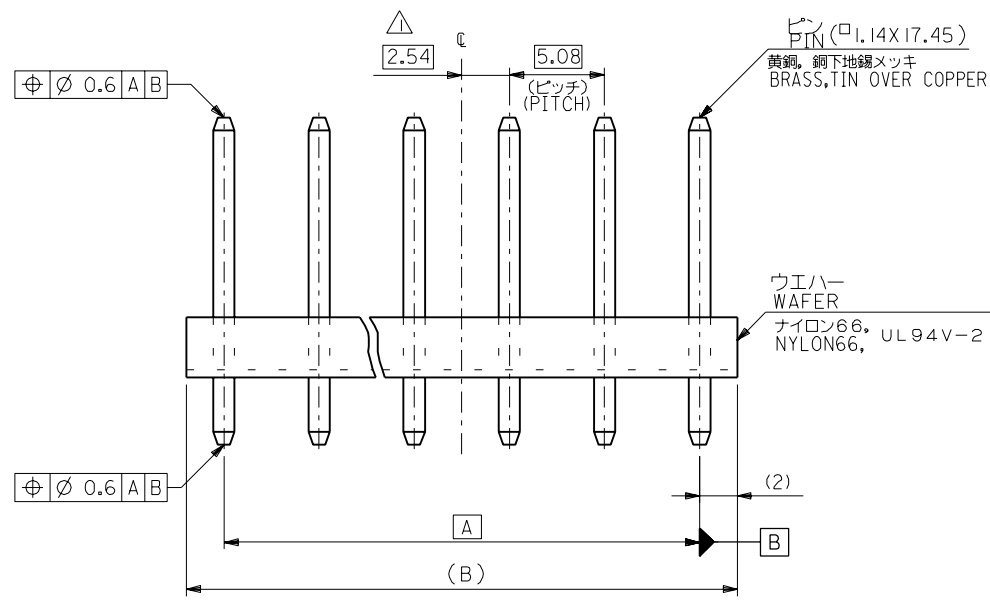


注記
NOTE

- △ 全極数が偶数の場合のみ適用。
TO BE APPLIED ONLY WHEN ALL CKTS. ARE EVEN.
- 2 ウエハーの反りは、長さ 25.4 に対して 0.2 最大。
CAMBER MUST BE 0.24 MAX. PER 25.4.



| | | | | |
|-------|-------|------------|----------|------------|
| 59.88 | 55.88 | 10-02-1127 | 5279-12A | 12 |
| 54.8 | 50.8 | ▲ -1117 | ▲ -11A | 11 |
| 49.72 | 45.72 | ▲ -1107 | ▲ -10A | 10 |
| 44.64 | 40.64 | -1097 | -09A | 9 |
| 39.56 | 35.56 | -1087 | -08A | 8 |
| 34.48 | 30.48 | -1077 | -07A | 7 |
| 29.4 | 25.4 | -1067 | -06A | 6 |
| 24.32 | 20.32 | -1057 | -05A | 5 |
| 19.24 | 15.24 | -1047 | -04A | 4 |
| 14.16 | 10.16 | ▼ -1037 | ▼ -03A | 3 |
| 9.08 | 5.08 | 10-02-1027 | 5279-02A | 2 |
| B | A | EDP NO. | ENG. NO. | 極数 CKT. |

| | | | |
|-----------------------------------|------------------------------------|--------------------------|-------------|
| 材料 MATERIAL | | 図中参照 SEE DRAWING | |
| 仕上げ FINISH | | — — — | |
| 適用電線範囲 WIRE RANGE | | — — — | |
| 被覆外径 INS. RANGE | | — — — | |
| DRAWN BY '94/10/11 T.ASAKAWA | CHK'D BY '94/10/17 Y.M.HIRAMOTO | T.A REVISED & REDRAWN | H.H DATE |
| APP'D BY '94/10/17 M.FUKUSHIMA | 尺度 SCALE | DR. CHK. | 日付 DATE |
| 一般公差 GENERAL TOLERANCES | 記号 LTR | 変更内容 REVISION RECORD | DR. CHK. |

| | |
|---|----------|
| molex MOLEX-JAPAN CO.,LTD. 日本モレックス株式会社 | |
| REVISE ONLY ON CAD SYSTEM | |
| TITLE 名称 KK 5.08 WAFER ASS'Y | |
| DWG. NO. SD-5279-NA | REV A |