

100 Series Case (Recessed or flush top available)

A very versatile shell enclosure with recessed area for membrane keypad. Battery options include: 2AA, 3AA, 4AA, 6AA, 1 or 2-9V, 2C, 4C and No battery.

Battery Options:

- No Battery
- 2 AA cells 1 or 2-9V cells
- 3 AA cells 2 C sized sells
- 4 AA cells 4 C sized cells
- 6 AA cells

Color Options:

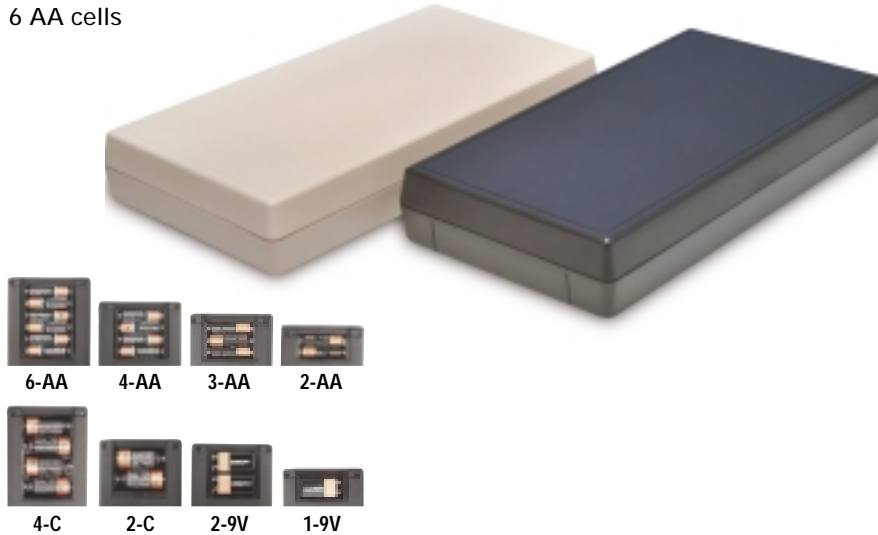
- PC Bone
- Black
- Custom color matching

Standard Material Options:

- ABS UL 94 VO (fire retardant)
- ABS UL 94 HB standard

Dimension Options:

- (L x W x H)
- 7.50" x 4.0" x 1.12"
- 7.50" x 4.0" x 1.29"
- 7.50" x 4.0" x 1.75"
- 7.50" x 4.0" x 1.90"



Case Dimensions	7.5x4.0x1.2 inches	7.5x4.0x1.29 inches	7.5x4.0x1.75 inches	7.5x4.0x1.90 inches
Description	Part No.	Part No.	Part No.	Part No.
Shell case with NO Battery Compartment	100-41-NO	100-42-NO	100-41-NO-E	100-42-NO-E
Shell case with 2AA Battery Compartment	100-41-2A	100-42-2A	100-41-2A-E	100-42-2A-E
Shell case with 3AA Battery Compartment	100-41-3A	100-42-3A	100-41-3A-E	100-42-3A-E
Shell case with 4AA Battery Compartment	100-41-4A	100-42-4A	100-41-4A-E	100-42-4A-E
Shell case with 6AA Battery Compartment	100-41-6A	100-42-6A	100-41-6A-E	100-42-6A-E
Shell case with 9V Battery Compartment	100-41-9V	100-42-9V	100-41-9V-E	100-42-9V-E
Shell case with 2-9V Battery Compartment	100-41-29V	100-42-29V	100-41-29V-E	100-42-29V-E
Shell case with 2C Battery Compartment			100-41-2C-E	100-42-2C-E
Shell case with 4C Battery Compartment			100-41-4C-E	100-42-4C-E

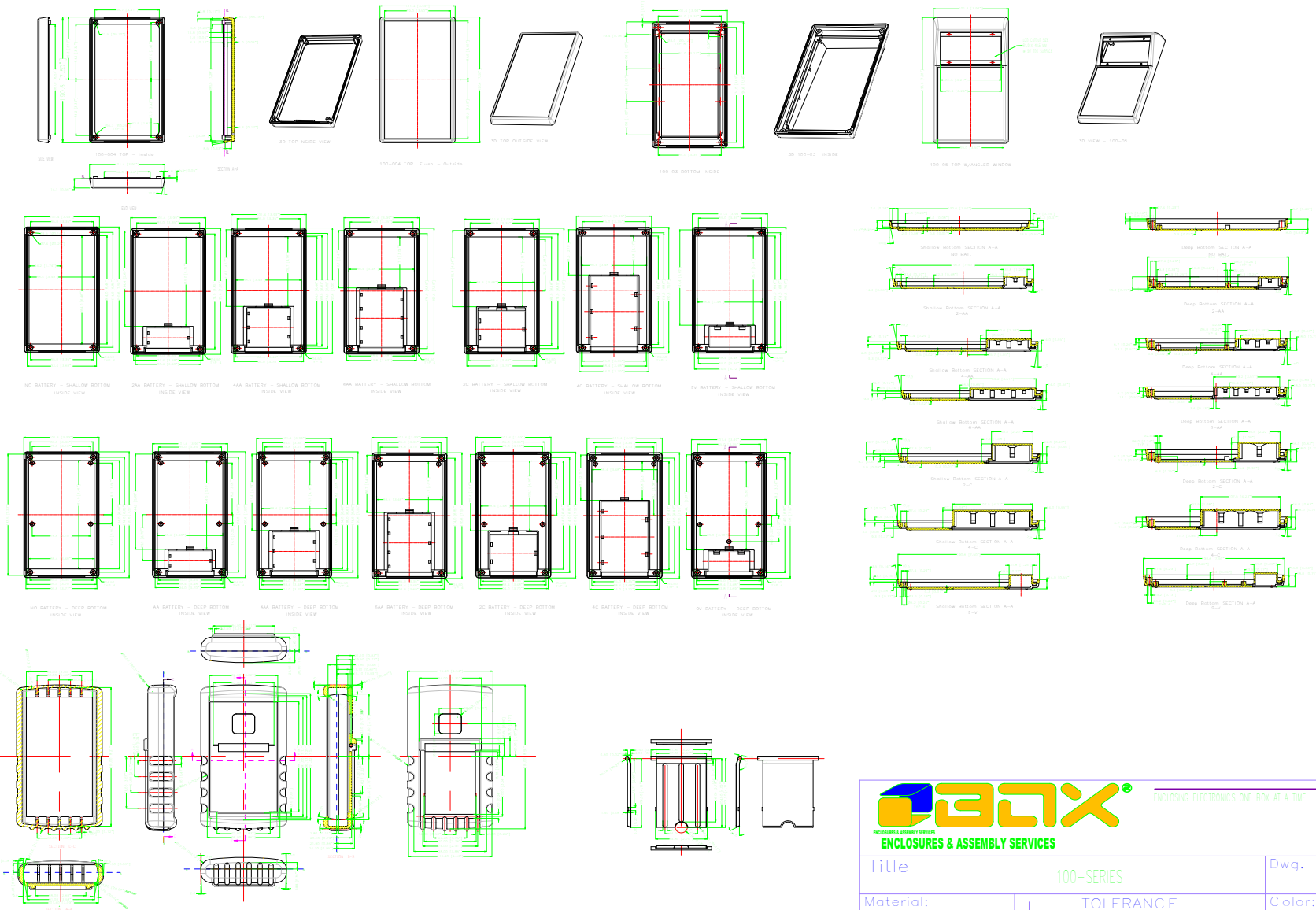
Note: for black add BL to part number, for bone add BO to part number

Note: For recessed tops add R


Note: For Flush tops add F

ACCESSORIES

Protective Boot w/Integrated tilt bar	Light Blue	Dark Blue	Bright Orange	Bright Yellow	Red	Black	
	Part No.	Part No.	Part No.	Part No.	Part No.	Part No.	
	100-RBT-LBL	100-RBT-DBL	100-RBT-ORG	100-RBT-YEL	100-RBT-RED	100-RBT-BLK	
Battery Clip Sets	2AA set	3AA set	4AA set	6AA set	9V snap on	2C set	4C set
	Part No.	Part No.	Part No.	Part No.	Part No.	Part No.	Part No.
	BAT-2A	BAT-3A	BAT-4A	BAT-6A	BAT-9VS	BAT-2C	BAT-4C
Belt Clips	Bone	Black					
	Part No.	Part No.					
	CLP-BONE	CLP-BLK					
Expander Panel	Black Panel	Bone Panel					
	Part No.	Part No.					
(increases case height by 0.5 inches)	100-EXPBLK	100-EXPBONE					
Required for C size battery options							

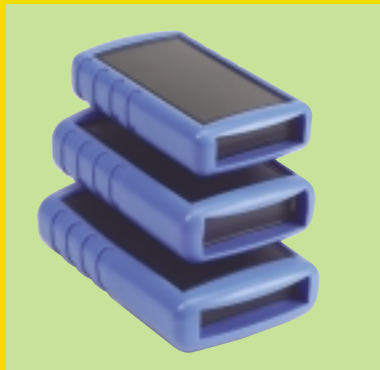
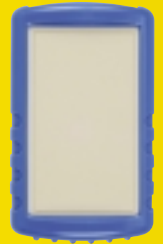


THIS DRAWING IS THE PROPERTY OF AND MAY EMBODY PROPRIETARY INFORMATION OWNED BY X-Box Enclosures. IT IS PROVIDED UNDER A CONFIDENTIAL RELATIONSHIP FOR A SPECIFIC PURPOSE. THE RECIPIENT AGREES TO USE IT ONLY FOR SUCH PURPOSE AND RETURN IT TO X-Box Enclosure UPON REQUEST.

 <p>ENCLOSING ELECTRONICS ONE BOX AT A TIME</p>		Revision:	
		Model:	
Title: 100-SERIES		Dwg. No.:	Part No.:
Material:	<p>TOLERANCE all dimension in mm unless otherwise specified.</p> <p>x ±0.20 .x ±0.10 .xx ±0.05 ANGLE ±0.5°</p>	Color:	Drn. Date Tan zonghaun Apr 10 04
Finish:		Qty:	Chk. Date
Proj. 		A4 Sheet 1 of 1	App. Date

New for 2004

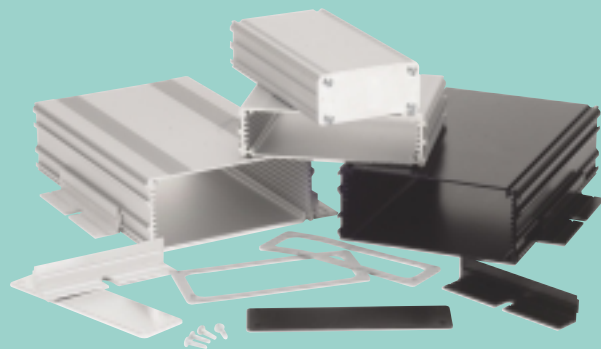
Featuring eight new product lines with protective rubber boots.



NEMA 4 / IP65 Enclosures



Extruded Aluminum



Protective Boots

NEW!



LCD Enclosures

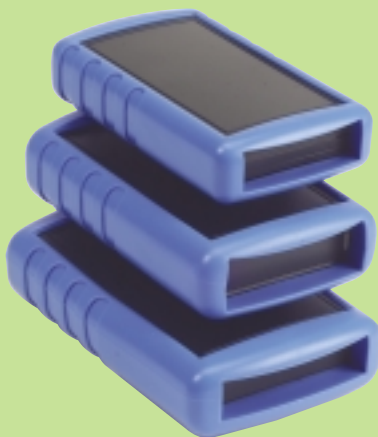


ENCLOSURES & ASSEMBLY SERVICES

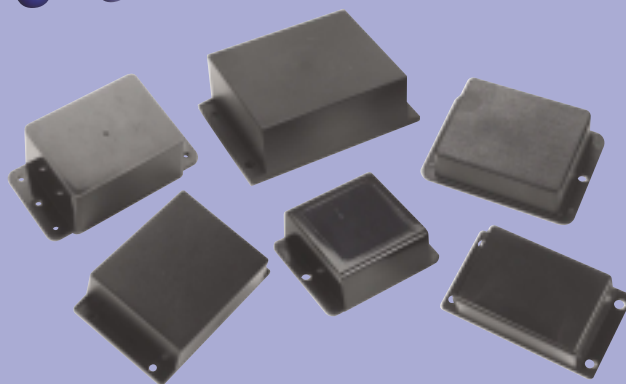
Enclosing electronics one box at a time.



Handheld Enclosures



Flange Cases



See back page for International Distribution Network