



MICRO SWITCH

FREEPORT, ILLINOIS, U.S.A.
A DIVISION OF HONEYWELL

FED. MFG. CODE 91820

SWITCH - BASIC

CATALOG LISTING

BZ-2RN-A2

FORMTEK
FO-90378

DRAWN
W L K 7 APR 64

CHECK
DAW 15 APR 64

CHECK
10 SEP 98

CHECK
30 MAR 94

CHECK
22 NOV 93

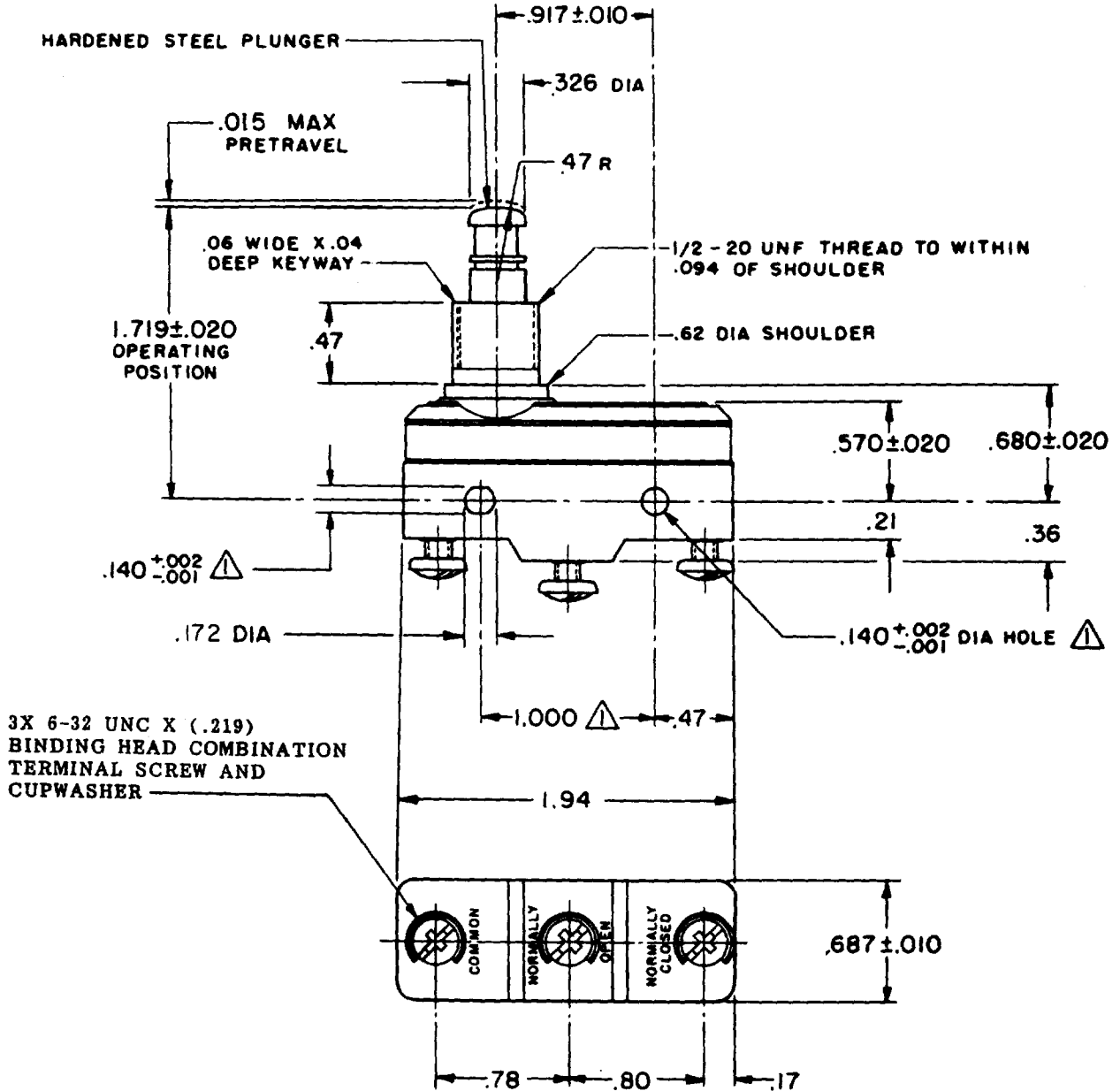
CHECK
7 APR 84

CHECK
17 410

REPLACES
PAGE 1 OF 1

ISSUE
6

DRAWING NUMBER
M BZ-2RN-A2



NOTE
 ▲ - MOUNTING HOLES WILL ACCEPT PINS OR SCREWS OF .139 MAX DIA ON 1.000 ± .002 CENTERS

THIS DRAWING COVERS A PROPRIETARY ITEM AND IS THE PROPERTY OF MICRO SWITCH, A DIVISION OF MINNEAPOLIS-HONEYWELL REGULATOR CO. THIS DRAWING IS NOT TO BE COPIED OR USED WITHOUT THE APPROVAL OF MICRO SWITCH.

CHARACTERISTICS	ELECTRICAL DATA	SCALE FULL
OPERATING FORCE ----- 9-13 OZ	CONTACT ARRANGEMENT S P D T	DO NOT SCALE PRINT
RELEASE FORCE ----- 4 OZ MIN	UNDERWRITERS' LAB. INC. LISTED RATINGS -L96- 1/2 A-125, 250, OR 450 VAC 1/4 A-125 VDC; 1/4 A-250 VDC 1/8 HP-125 VAC, 1/4 HP-250 VAC	UNLESS OTHERWISE NOTED DIMENSIONS ARE IN INCHES TOLERANCES ARE:
DIFFERENTIAL TRAVEL ----- .0004-.0020	-L288- -L299- -L306-	ONE PLACE (.6) ±.030 TWO PLACE (.00) ±.015 THREE PLACE (.000) ±.005 ANGLES 1/4°.005
OVERTRAVEL ----- .219 MIN	CE D S 16A 250V ~ T85 5E4	WEIGHT .120 LB