

# MICRO SWITCH

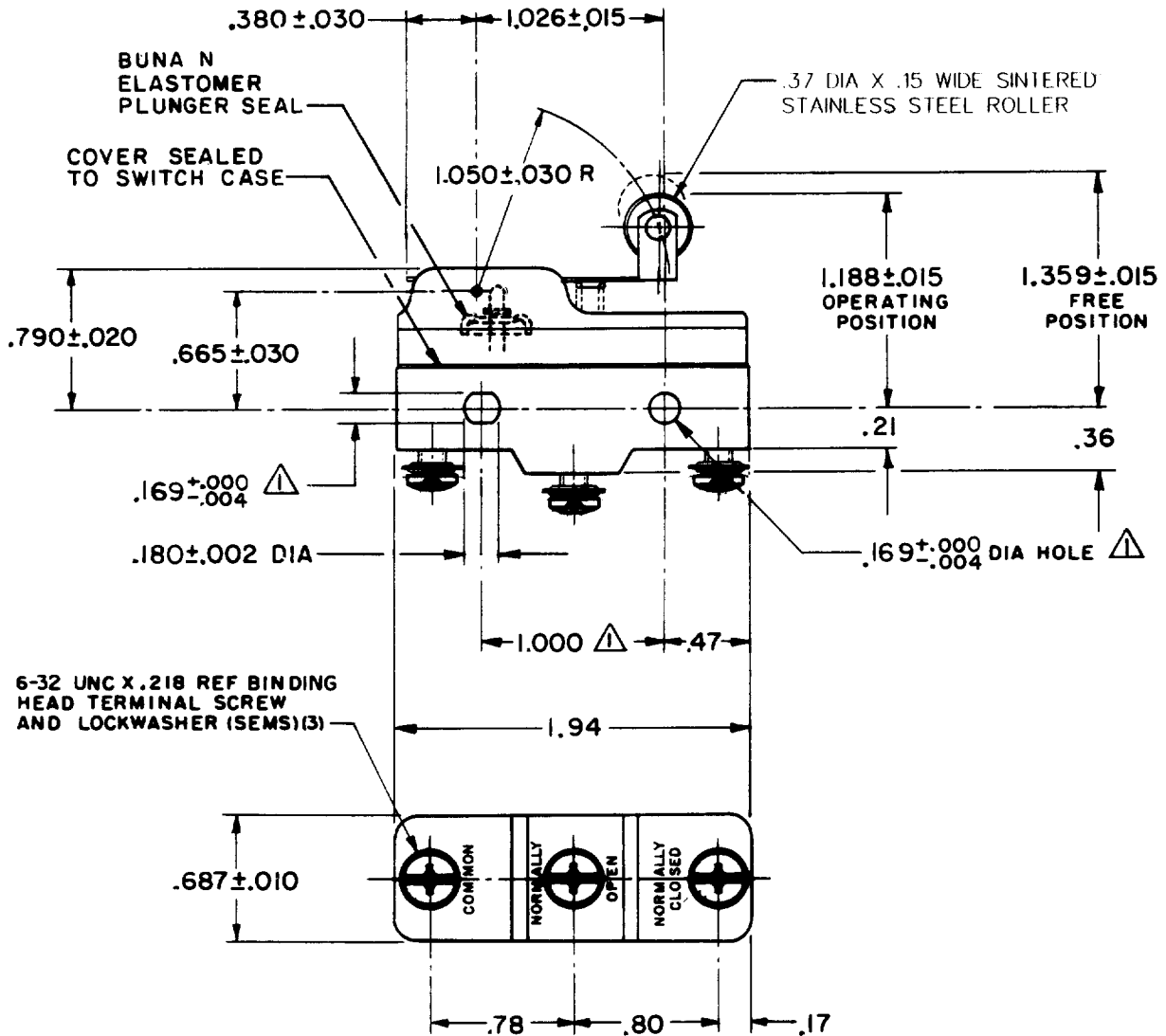
FREEPORT ILLINOIS, U.S.A  
A DIVISION OF HONEYWELL  
FED. MFG. CODE 91929

## SWITCH - BASIC

CATALOG LISTING

BZ-3RW8221555513T-S

WHEN SEARCHING FOR THIS CATALOG LISTING WITHIN HONEYWELL'S INTERNAL SAP SYSTEM, THE LISTING MUST BE ENTERED WITHOUT DASHES (BZ3RW8221555513TS) DUE TO CHARACTER LIMITATIONS IMPOSED BY THE SYSTEM.

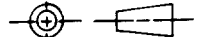


**NOTE-**

- ▲ - MOUNTING HOLES WILL ACCEPT PINS OR SCREWS OF .165 MAX DIA ON 1.000 ± .002 CENTERS
- 2 - SEALED CONSTRUCTION PROVIDES SPLASH RESISTANCE

THIS DRAWING COVERS A PROPRIETARY ITEM AND IS THE PROPERTY OF MICRO SWITCH, A DIVISION OF HONEYWELL. THIS DRAWING IS NOT TO BE COPIED OR USED WITHOUT THE APPROVAL OF MICRO SWITCH.

THIRD ANGLE PROJECTION



### CHARACTERISTICS

OPERATING FORCE-- 6 1/2 OZ MAX  
RELEASE FORCE----- 1 1/2 OZ MIN  
DIFFERENTIAL TRAVEL-- .007 - .030  
OVERTRAVEL----- .094 MIN

### ELECTRICAL DATA

CONTACT ARRANGEMENT  
S P D T  
L9 10A-125, 250 OR 480 VAC  
1/2A-125 VDC, 1/4A-250 VDC

L288



SCALE NONE

DO NOT SCALE PRINT

#### TOLERANCES

APPLY TO DESIGN UNITS. CONVERSIONS ARE ONLY FOR REFERENCE. UNLESS NOTED, TOLERANCES ARE ±

DIM.	TOL.	DIM.	TOL.
mm	mm/in	in	mm/in
NO PLACES	X	17.04	
ONE PLACE	X,X	0.41/016	X,X 0.87/03
TWO PLACES	X,XX	0.157/006	X,XX 0.387/015
THREE PLACES	X,XXX		X,XXX 0.137/006
ANGLES			

SI METRIC  US CUSTOMARY

DESIGN UNITS  WEIGHT .076 LB.

BZ-3RW8221555513T-S

PAGE 1 OF 1

REPLACES

RELEASE NO. PR # 14877

DRAWING NUMBER

7

ISSUE

CHECK

REVISIONS

REV	DATE	DESCRIPTION
A	067209	
	J A P	
	MAY 90	
B		
C	701846	
	G J W	
	MAR 92	
D	75204-B	
	W L S	
	FEB 94	
E	093346	
	D L T	
	AUG 98	
F	0046794	
	L K	
	DEC 08	

CHECK

28 JUN 86

K A G

CHECK

27 JUN 86

K A G

CHECK

27 JUN 86

K A G

CHECK

27 JUN 86

K A G

RASTER

FO-52848-A

DRAWN

MAP