

P26-Series



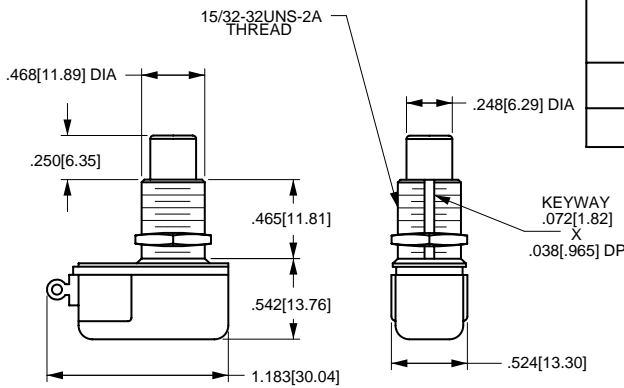
The P26-Series pushbutton switches are single pole, AC rated for 8 amps at 125 VAC and suitable for shallow back panel applications. These switches are momentary action with a medium actuation force (13 oz. typical). The P26-Series switch is equipped with a slow-make, slow-break contact mechanism.

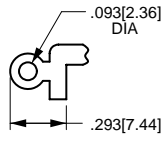
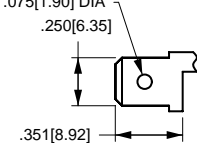
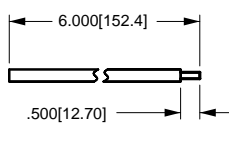
Specifications

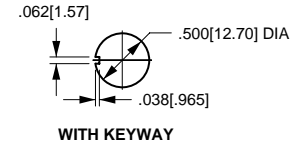
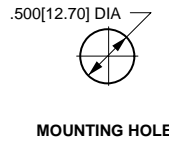
- Certifications*: UL, CSA
- Dielectric Strength: 1,000V (minimum)
- Insulation Resistance: 100 Megohms (minimum)
- Base Material: Phenolic
- Actuator Material: Nylon or Brass
- Bushing Material: Brass/Nickel Plate





* Due to ongoing technological advances, consult factory for certification specifics.

Dimensional Specifications: in. [mm]



 SOLDER LUG	 .250 TAB (Q.C.) (Momentary ON only)	 INTEGRATED WIRE LEAD (no exposed conductors)
TERMINAL TYPE		



SERIES	RATING	TERMINATION/ FUNCTION	BUSHING ¹	LENGTH	DIAMETER
P SINGLE POLE PUSHBUTTON	26 3A 250VAC 6A 125VAC 3/4A 125V	A SOLDER LUG OFF-(ON)	1A	.406	.375
	28 4A 250VAC 8A 125VAC 1A 125V	B .250TAB (QC) OFF-(ON)	1B	.406	.468
	265 3A 250VAC 6A 125VAC 3/4A 125V 5A 12V	F WIRE LEAD OFF-(ON)	1C	.465	.375
	267 3A 277VAC 6A 125VAC	L SOLDER LUG ON-(OFF)	1D	.465	.468
		T WIRE LEAD ON-(OFF)	BUTTON COLOR/STYLE²		
			BL	BLACK NYLON	
			RD	RED NYLON	
			RND MTL	ROUND METAL	
			CON MTL	CONCAVE METAL	

NOTES:

Shading indicates standard configurations.

1 For panel mounting to assure equal button heights, use bushing 1A or 1B for Momentary ON and 1C or 1D for Momentary OFF.

2 Round metal and concave metal buttons are only available with 1D bushing, which will be .562 in length.