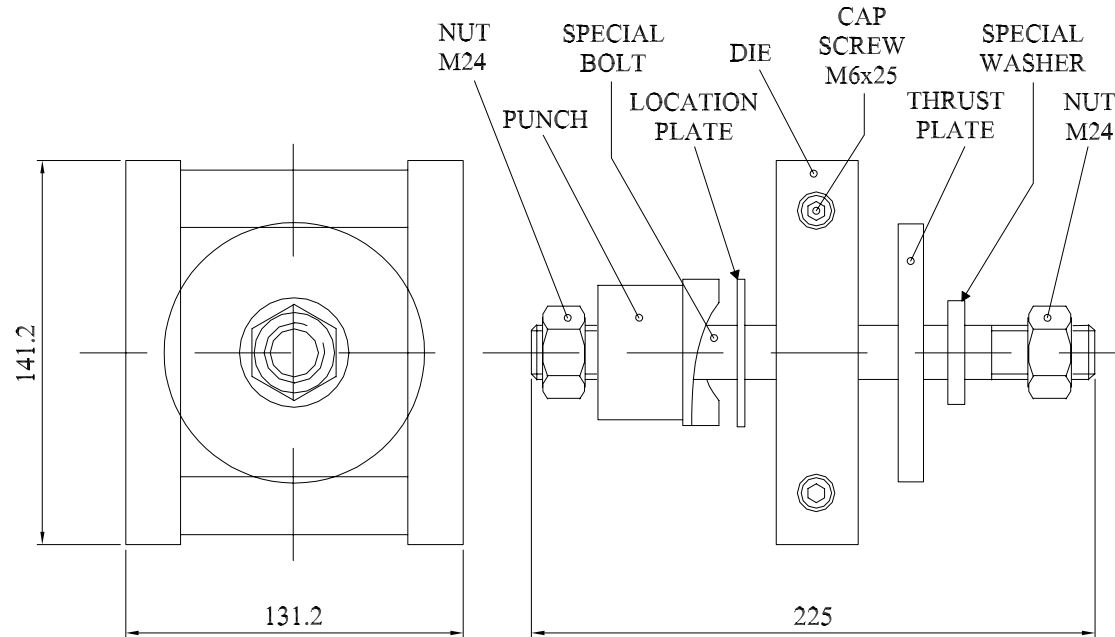


One of a range of hole cutters in industry standard sizes, to be used with a Hydraulic Power Pump / Cylinder.  
 Designed to punch burr-free holes in up to 3,0mm thick (10swg) mild steel and up to 4,0mm thick aluminium  
 The punch and die are case hardened and tempered. All items are finished chemically blacked, and are machined to close tolerances.

MATERIAL	
NUT, M24	: Mild Steel
PUNCH	: Steel, EN1A non-leded
SPECIAL BOLT	: Steel, EN16T
LOCATION PLATE	: Steel, EN3B
SCREW, M6	: Steel
DIE	: Steel, EN1A non-leded
SPECIAL WASHER	: Mild Steel
THRUST PLATE	: Mild Steel
NUT, M24	: Mild Steel

### Dimensions



CONVERTED FROM COREL PS0393 ISS2 (21.12.95) IN JAN 2003

	ISSUE <b>2</b>	TITLE SQUARE - 92x92mm FOR HYDRAULIC POWER PACK			ALL DIMENSIONS IN MM ANGLES IN DECIMAL DEGREES	
		GENERAL SPECIFICATION FOR HOLE CUTTER		CUSTOMER		FILTER REF
		Aprvd Date 10/02/03	Aprvd By MC	Drwn by BFS	Scale: NTS	Sheet 1 / 1