

# FILTERING

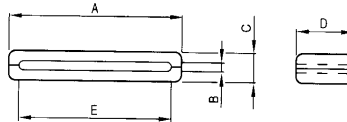
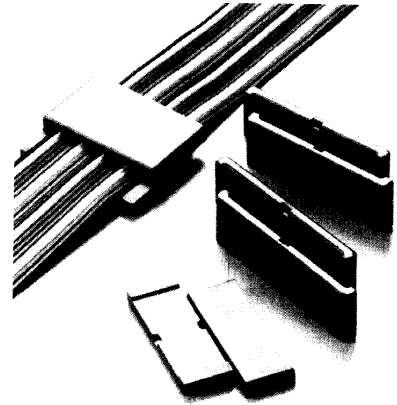
## FLAT CABLE FERRITES

### Features

- Employ high-performance ferrites (Nickel-Zinc) effective against high frequency noise.
- Designed to help reduce cost and time to market saving.
- Can be installed in its intended location before or after product assembly.

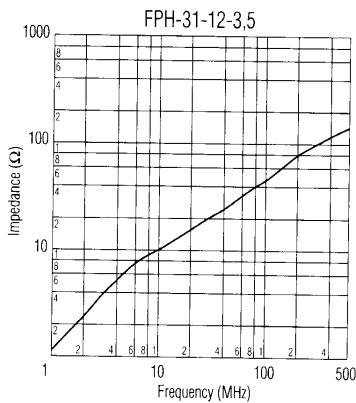
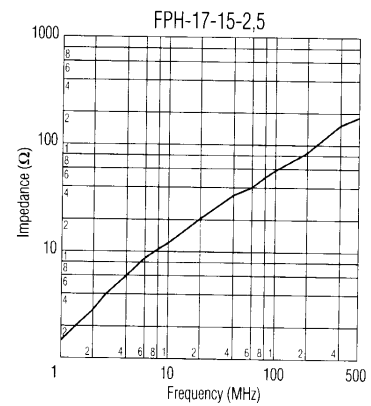
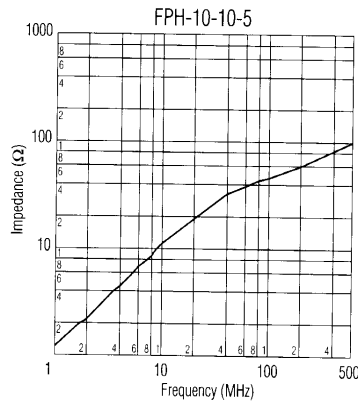
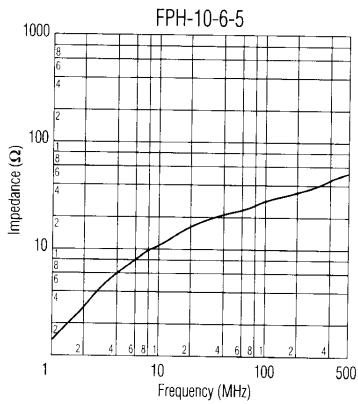
### Application

- Superior suppression of radiation emissions for full compliance with FCC, VDE and VCCI on Interface/data line ribbon cables of computers, peripheral/terminal equipment.



Part No.	A	B	Unit: mm			Impedance ( $\Omega$ )		Max. Cable Width (mm)
			C	D	E	25MHz	100MHz	
FPH-6,8-5-3	6,8	0,9	3,0	5,0	4,6	-	-	4,3
FPH-10-6-5	10	1,8	5,0	6,0	6,8	16	29	6,5
FPH-10-10-5	10	1,8	5,0	10,0	6,8	22	48	6,5
FPH-17-15-2,5	17,0	0,8	2,5	15,0	13,0	24	56	12,8
FPH-31-12-3,5	31,0	0,4	3,5	12,0	27,0	17	46	26,5

No Mounting Parts available for all size



# FILTERING

## FLAT CABLE FERRITES

### Features

- Employ high-performance ferrites (Nickel-Zinc) effective against high frequency noise.
- Designed to help reduce cost and time to market saving.
- Can be installed in its intended location before product assembly.

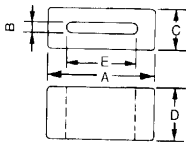


Fig. 2

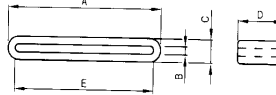


Fig. 1

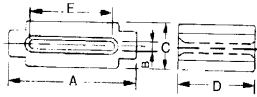
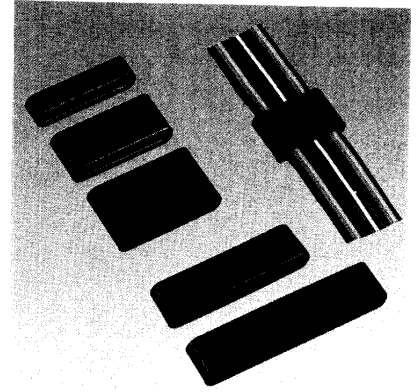


Fig. 3

### Applications

- Superior suppression of radiation emissions for full compliance with FCC, VDE and VCCI on Interface/ data line Ribbon/FPC cables of computers, peripheral/terminal equipment.



Part No.	Fig	Unit: mm					Impedance ( $\Omega$ )		Max. Cable Width (mm)
		A	B	C	E	D	25MHz	100MHz	
SSC-21-6.8-8B	2	21,0	1,3	6,8	15,0	8,0	32	44	14
SSC-21-6.8-15B	2	21,0	1,3	6,8	15,0	15,0	60	75	14
SSC-23.8-6.3-7	1	23,8	1,1	6,3	18,8	7,0	27	51	18
SSC-23.8-6.3-15	1	23,8	1,1	6,3	18,8	15,0	46	88	18
SSC-28-7.7-14.6	3	28,0	1,5	7,7	23,0	14,6	55	115	22
SSC-33.5-8	1	33.5	1,3	6.5	8	27	21	44	26
SSC-33.5-10	1	33.5	1,3	6.5	10	27	26	51	26
SSC-33.5-12	1	33.5	1,3	6.5	12	27	31	58	26
SSC-33.5-10-2	1	33.5	2.2	7.4	10	27	27	50	26
SSC-33.5-20	1	33.5	1,3	6.5	20	27	50	90	26
SSC-40-10	1	40.0	1,3	6.5	10	35	23	54	34
SSC-40-12	1	40.0	1,3	6.5	12	35	27	60	34
SSC-45-8	1	45.2	1,3	6.5	8	40	19	46	39
SSC-45-12	1	45.2	1,3	6.5	12	40	26	61	39
SSC-50-12	1	49.6	1,3	6.5	12	44	25	64	43
SSC-58-12	1	57.6	1,3	6.5	12	52	25	63	51

Mounting Parts Page 10 + 16

