

PART NAME

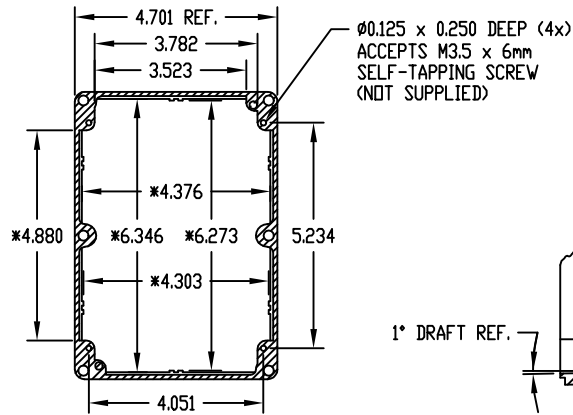
NEMA 4X DIE CAST ALUMINUM ENCLOSURE

PART No.

AN-1306, AN-1306-G, AN-2806 & AN-2806-B

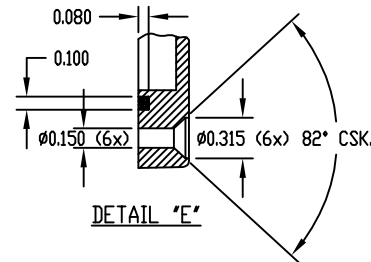
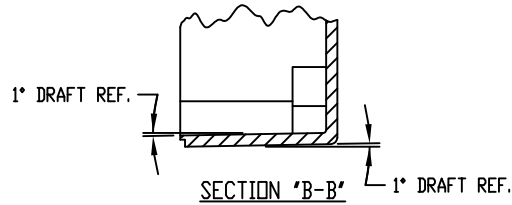
REV. DATE

12-17-08



SECTION "C-C"

* DIMENSIONS ARE AT BOTTOM OF ENCLOSURE

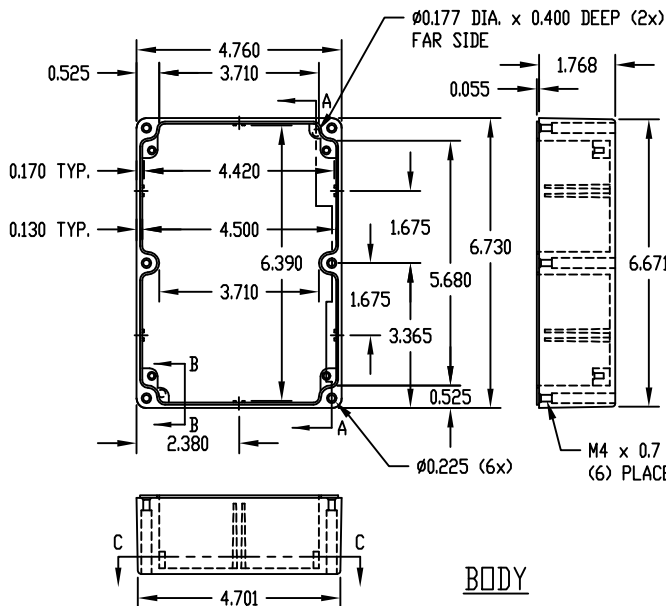


MATERIAL: ALUMINUM ALLOY #ADC-12

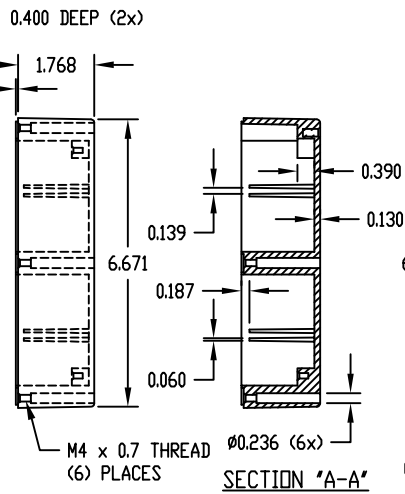
FINISH: NATURAL (NO SUFFIX)
GRAY (SUFFIX -G)
SMOOTH BLACK (SUFFIX -B)

NOTES:

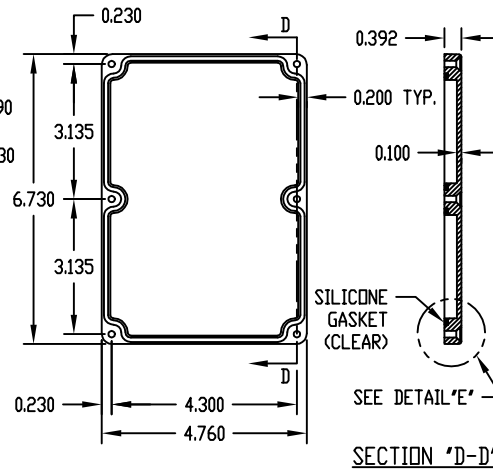
- 1) SIX (6) M4 x 20mm (0.787") LG. SCREWS SUPPLIED FOR ASSEMBLY OF COVER TO BODY.
- 2) ALL HOLE DIAMETERS HAVE ± 0.005 TOLERANCE. ALL OTHER DIMENSIONS HAVE ± 0.015 TOLERANCE.



BODY

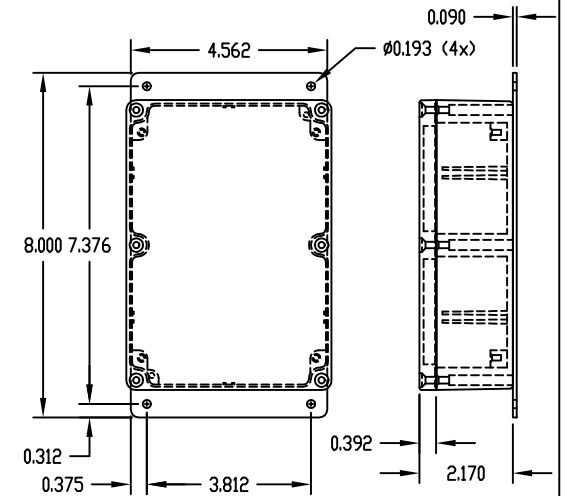


SECTION "A-A"



SECTION "D-D"

COVER



PART NO. AN-2806 & AN-2806-B ARE SUPPLIED WITH A WELDED ON MOUNTING BRACKET ONLY.