

**nominal voltage:** 1,2V  
**max. charge voltage:** 1,5V

**capacity**  
 nominal : 5000mAh  
 minimum: 4000mAh  
 3800mAh

**max. continuous discharge current:** 5000mA

**charge**  
 standard charge: 500mA  
 quick charge: 1400mA  
 fast charge: 2500mA

recommended charge termination control parameters:  
 -dV: 0....10mV  
 dT/dt: 0,8....1 °C per min  
 TCO: 45....50 °C

trickle charge current: 50....250mA (recommended)

continuous overcharge: <500mA (less than 1 year)

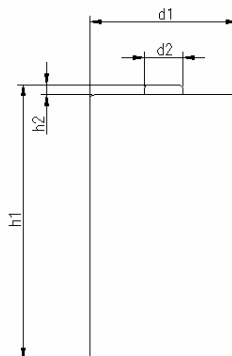
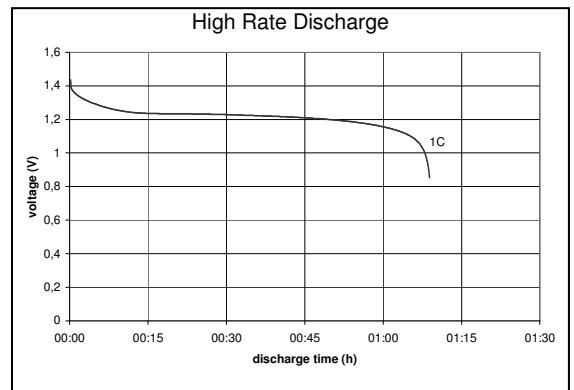
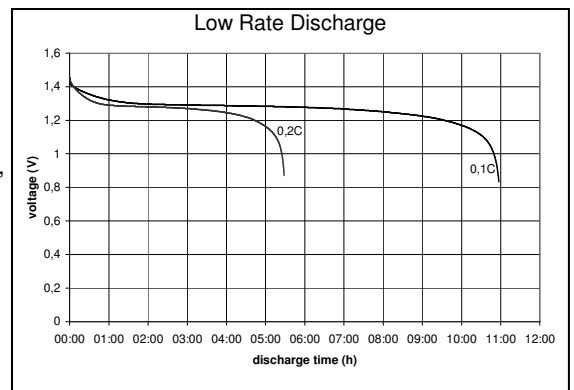
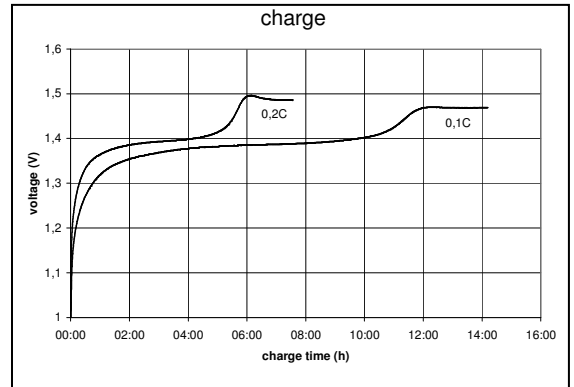
**internal resistance:** ≤25mOhms

**life expectancy:** >500 cycles

**ambient temperature range:** 0....45 °C  
 10....40 °C  
 -20....60 °C  
 -20....35 °C

conditions  
 at standard charge (0,1C / 20 °C)  
 discharge at 0,2C  
 discharge at 0,2C  
 discharge at 0,5C  
 1,0V end discharge voltage  
 ambient temperature 20 °C  
 ambient temperature -20....60 °C

charge current charge time  
 500mA 16hrs  
 1400mA 4hrs  
 2500mA 2,2hrs



**mechanical specifications**  
 cell dimensions (with sleeve)  
 diameter d1: 33,0 -1,0mm  
 diameter d2: 9,5 -2,5mm  
 height h1: 61,5 -2,0mm  
 height h2: min. 1,5mm  
 weight: approx. 108g

	specifications for model/type:	D – NiMH 5000mAh
		2 pcs blister packing
	Ansmann drawing number / part number:	5030922
	author / date:	Gramlich / 07.08.2007