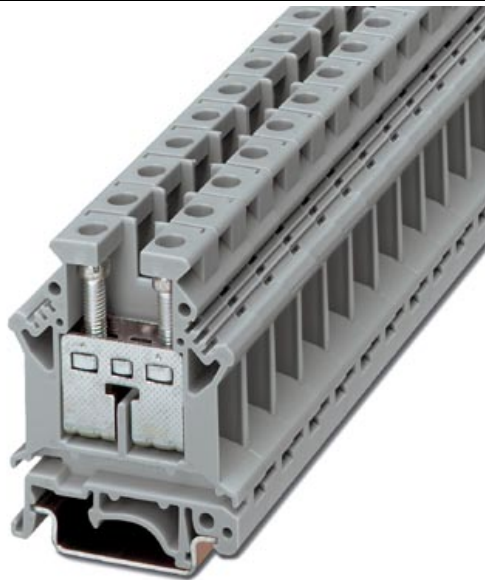


Please note that the data given here has been taken from the online catalog. For comprehensive information and data, please refer to the user documentation at <http://www.download.phoenixcontact.com>. The General Terms and Conditions of Use apply to Internet downloads.

► Extract from the online catalog



Universal terminal block with screw connection, cross section: 4 - 16 mm², AWG: 12 - 4, width: 12.2 mm, color: blue

The illustration shows version UK 16 N in gray

| | |
|--------------------------|--------------------|
| Order No. | 3006056 |
| Ord designation | UK 16 N BU |
| EAN | 4017918091316 |
| Pack | 50 Pcs. |
| Customs tariff | 85369010 |
| Weight/Piece | 0,024135 KG |
| Catalog page information | Page 213 (CL-2005) |

► Product notes

WEEE/RoHS-compliant since: 01/01/2003



IMPORTANT : This date is valid for Customers in Germany only. Date Format is MM/DD/YYYY. Please contact your local in-country Phoenix Contact location or designated business partner for a Logistics Compliant date in your area. In order to guarantee delivery of RoHS-Compliant product, please purchase Phoenix Contact parts from authorized Phoenix Contact representatives and distributors.

UK 16 N BU



► **Technical data**

General

| | |
|------------------------------------|------|
| Number of levels | 1 |
| Number of connections | 2 |
| Color | blue |
| Insulating material | PA |
| Inflammability class acc. to UL 94 | V0 |

Dimensions

| | |
|------------------|---------|
| Width | 12.2 mm |
| Length | 42.5 mm |
| Height NS 35/7,5 | 54 mm |
| Height NS 35/15 | 61.5 mm |
| Height NS 32 | 59 mm |

Technical data

| | |
|----------------------------------|---|
| Maximum load current | 101 A (with 25 mm ² conductor cross section) |
| Rated surge voltage | 8 kV |
| Contamination class | 3 |
| Surge voltage category | III |
| Insulating material group | I |
| Connection in acc. with standard | IEC / EN |
| Nominal current I _N | 101 A |
| Nominal voltage U _N | 800 V |
| Open side panel | ja |

Connection data

| | |
|---|----------------------|
| Conductor cross section solid min. | 2.5 mm ² |
| Conductor cross section solid max. | 25 mm ² |
| Conductor cross section stranded min. | 4 mm ² |
| Conductor cross section stranded max. | 16 mm ² |
| Conductor cross section AWG/kcmil min. | 12 |
| Conductor cross section AWG/kcmil max | 4 |
| Conductor cross section stranded, with ferrule without plastic sleeve min. | 1.5 mm ² |
| Conductor cross section stranded, with ferrule without plastic sleeve max. | 16 mm ² |
| Conductor cross section stranded, with ferrule with plastic sleeve min. | 1.5 mm ² |
| Conductor cross section stranded, with ferrule with plastic sleeve max. | 16 mm ² |
| 2 conductors with same cross section, solid min. | 1.5 mm ² |
| 2 conductors with same cross section, solid max. | 6 mm ² |
| 2 conductors with same cross section, stranded min. | 1.5 mm ² |
| 2 conductors with same cross section, stranded max. | 4 mm ² |
| 2 conductors with same cross section, stranded, TWIN ferrules with plastic sleeve, min. | 0.75 mm ² |
| 2 conductors with same cross section, stranded, TWIN ferrules with plastic sleeve, max. | 10 mm ² |
| 2 conductors with same cross section, stranded, ferrules without plastic sleeve, min. | 1.5 mm ² |

UK 16 N BU



2 conductors with same cross section, stranded, ferrules 6 mm²
without plastic sleeve, max.

| | |
|---------------------------|------------------|
| Type of connection | Screw connection |
| Stripping length | 11 mm |
| Internal cylindrical gage | B7 |
| Screw thread | M 4 |
| Tightening torque, min | 1.5 Nm |

► Certificates / Approvals

Certificate logos



CSA

| | |
|-----------------------|-------|
| Nominal voltage U_N | 600 V |
| Nominal current I_N | 85 A |
| AWG/kcmil | 22-4 |

CUL

| | |
|-----------------------|-------|
| Nominal voltage U_N | 600 V |
| Nominal current I_N | 85 A |
| AWG/kcmil | 22-4 |

UL

| | |
|-----------------------|-------|
| Nominal voltage U_N | 600 V |
| Nominal current I_N | 85 A |
| AWG/kcmil | 22-4 |

► Accessories

| Item | Designation | Description |
|-----------------|-------------------------------|---|
| Assembly | | |
| 3003224 | ATP-UK | Separating plate, for visual and electrical separation of terminal groups, width: 1.5 mm, color: Gray |
| 3022218 | CLIPFIX 35 | Snap-on end bracket, for 35 mm NS 35/7.5 or NS 35/15 mounting rail, can be fitted with Zack strip ZB 8 and ZB 8/27, terminal strip marker KLM 2 and KLM, width: 9.5 mm, color: gray |
| 3006027 | D-UK 16 | Cover, width: 1.5 mm, color: gray |
| 3006108 | D-UK 16 BU | Cover, width: 1.5 mm, color: blue |
| 1201442 | E/UK | End clamp, for supporting the electronic base. If mounted vertically, 2 end clamps are required in each case |
| 1024250 | EA 7 | Single covers, color: transparent |
| 0800747 | EA 7-WS | Single covers, for covering one terminal block, with black symbol (lightning flash) snap fit, color: transparent/yellow |
| 1201028 | NS 32 AL UNPERF 2000MM | G rail 32 mm (NS 32) |
| 1201280 | NS 32 CU/120QMM UNPERF 2000MM | G-profile DIN rail, deep-drawn, material: Copper, unperforated, height 15 mm, width 32 mm, length 2 m |
| 1201358 | NS 32 CU/35QMM UNPERF 2000MM | G-profile DIN rail, material: Copper, unperforated, height 15 mm, width 32 mm, length 2 m |
| 1201002 | NS 32 PERF 2000MM | G-profile DIN rail, material: Steel, perforated, height 15 mm, width 32 mm, length 2 m |
| 1201015 | NS 32 UNPERF 2000MM | G-profile DIN rail, material: Steel, unperforated, height 15 mm, width 32 mm, length 2 m |
| 0801762 | NS 35/ 7,5 CU UNPERF 2000MM | DIN rail, material: Copper, unperforated, height 7.5 mm, width 35 mm, length: 2 m |
| 0801733 | NS 35/ 7,5 PERF 2000MM | DIN rail, material: Steel, perforated, height 7.5 mm, width 35 mm, length: 2 m |
| 0801681 | NS 35/ 7,5 UNPERF 2000MM | DIN rail, material: Steel, unperforated, height 7.5 mm, width 35 mm, length: 2 m |
| 1201756 | NS 35/15 AL UNPERF 2000MM | DIN rail, deep-drawn, high profile, unperforated, 1.5 mm thick, material: Aluminum, height 15 mm, width 35 mm, length 2 m |
| 1201895 | NS 35/15 CU UNPERF 2000MM | DIN rail, material: Copper, unperforated, 1.5 mm thick, height 15 mm, width 35 mm, length: 2 m |
| 1201730 | NS 35/15 PERF 2000MM | DIN rail, material: Steel, perforated, height 15 mm, width 35 mm, length: 2 m |
| 1201714 | NS 35/15 UNPERF 2000MM | DIN rail, material: Steel, unperforated, height 15 mm, width 35 mm, length: 2 m |
| 1201798 | NS 35/15-2,3 UNPERF 2000MM | DIN rail, material: Steel, unperforated, 2.3 mm thick, height 15 mm, width 35 mm, length: 2 m |
| 1302215 | TS-K | Separating plate, for electrical separation of neighboring bridges, can be fitted later, no loss of pitch, color: Gray |
| Bridges | | |
| 3006137 | EB 10-12 | Insertion bridge, 10-pos., divisible, fully insulated |
| 0200075 | FBI 2-12 | Fixed bridge, for cross connections, with screws, screw heads without insulation, 2-pos. |
| 0203454 | FBI 10-12 | Fixed bridge, 10-pos., screw heads with insulating collar, divisible, with screws |

Marking

| | | |
|---------|-------------|---|
| 1004212 | WS 4- 8 | Warning plate, with 2 plastic screws, across 4 terminal blocks, pitch 8 mm |
| 1050525 | ZB10:SO/CMS | Zack strip, 10-section, divisible, special printing, marking according to customer requirements |

Plug/Adapter

| | | |
|---------|---------------------|---|
| 2798035 | PAD 2,3/10/16 GN | Connector, color: green |
| 2798064 | PAD 4/10/16 GN | Connector, color: green |
| 2798093 | PAD-LOE/10/16 GN | Connector, color: green |
| 0311647 | PS-MT | Test plug, consisting of: metal part for 4 mm diameter socket hole and insulating sleeve for PS metal part |
| 0303299 | PSB 4/7/6 | Test plug socket, not insulated, length: 7 mm, screw thread width: 4 mm, socket width: 6 mm |
| 0303406 | PSBJ 4/15/6 BK | Test plug socket, insulated, length: 15 mm, screw thread width: 4 mm, socket width: 6 mm, insulation material in black |
| 0303354 | PSBJ 4/15/6 BU | Test plug socket, insulated, length: 15 mm, screw thread width: 4 mm, socket width: 6 mm, insulation material in blue |
| 0303419 | PSBJ 4/15/6 FARBLOS | Test plug socket, insulated, length: 15 mm, screw thread width: 4 mm, socket width: 6 mm, insulation material transparent |
| 0303370 | PSBJ 4/15/6 GN | Test plug socket, insulated, length: 15 mm, screw thread width: 4 mm, socket width: 6 mm, insulation material in green |
| 0303396 | PSBJ 4/15/6 GY | Test plug socket, insulated, length: 15 mm, screw thread width: 4 mm, socket width: 6 mm, insulation material in gray |
| 0303325 | PSBJ 4/15/6 RD | Test plug socket, insulated, length: 15 mm, screw thread width: 4 mm, socket width: 6 mm, insulation material in red |
| 0303383 | PSBJ 4/15/6 VT | Test plug socket, insulated, length: 15 mm, screw thread width: 4 mm, socket width: 6 mm, insulation material in violet |
| 0303312 | PSBJ 4/15/6 WH | Test plug socket, insulated, length: 15 mm, screw thread width: 4 mm, socket width: 6 mm, insulation material in white |
| 0303367 | PSBJ 4/15/6 YE | Test plug socket, insulated, length: 15 mm, screw thread width: 4 mm, socket width: 6 mm, insulation material in yellow |

► Address

PHOENIX CONTACT GmbH & Co. KG

Flachsmarktstr. 8

32825 Blomberg

Germany

Phone +49 5235 3 00

Fax +49 5235 3 41200

<http://www.phoenixcontact.com>

Phoenix Contact

Technical modifications reserved;