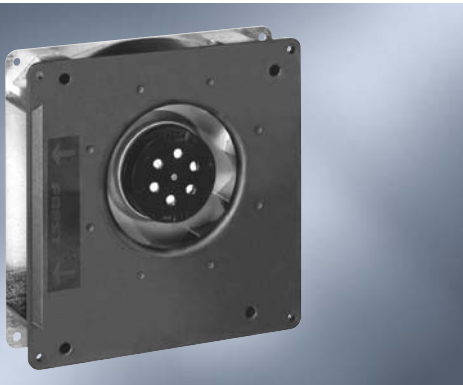


AC Radial Fans

Series RG 125 180 x 180 x 40 mm



- AC radial blower with external rotor shaded-pole motor. Impedance protected against overloading.
- Spiral housing and blower wheel of fibreglass-reinforced plastic. Housing base of galvanised steel plate.
- Air exhaust radial, through housing port. Rotational direction CW looking at rotor.
- Electrical connection via 2 leads AWG 22. Stripped and tinned ends.
- Mass 850 g.

Nominal Data	Air Flow		Nominal Voltage	Frequency	Noise	Sinter-Sleeve Bearings		Power Input	Nominal Speed	Temperature Range	Service Life L ₁₀		Curve
	m ³ /h	CFM				□ / ■	Watt				min ⁻¹	°C	
RG 125-19/56	86	50.6	230	50	5.8	■	20.0	2 550	-30...+70	37 500 / 20 000		1	
RG 125-19/06	94	55.3	115	60	6.0	■	19.0	2 750	-30...+80	40 000 / 15 000		2	

