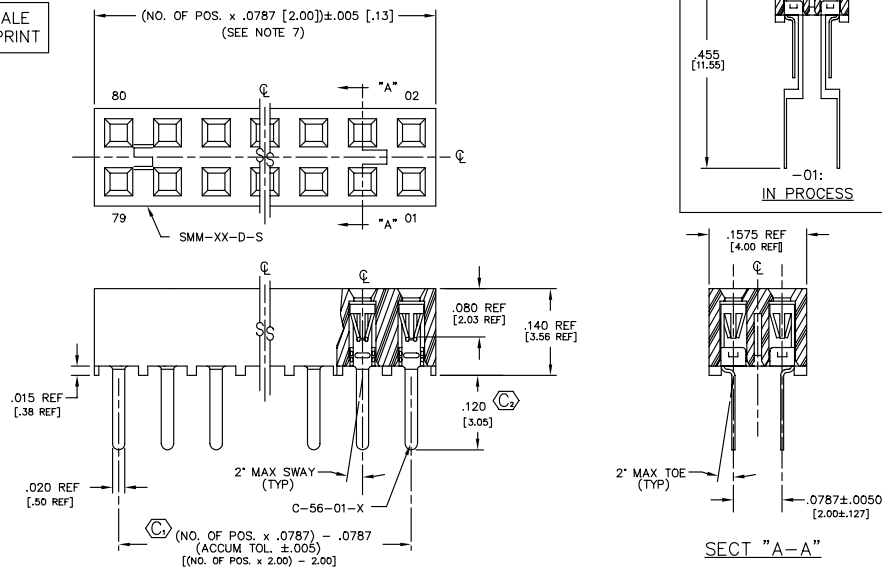


REVISIONS AM

DO NOT SCALE FROM THIS PRINT

FIG. 1

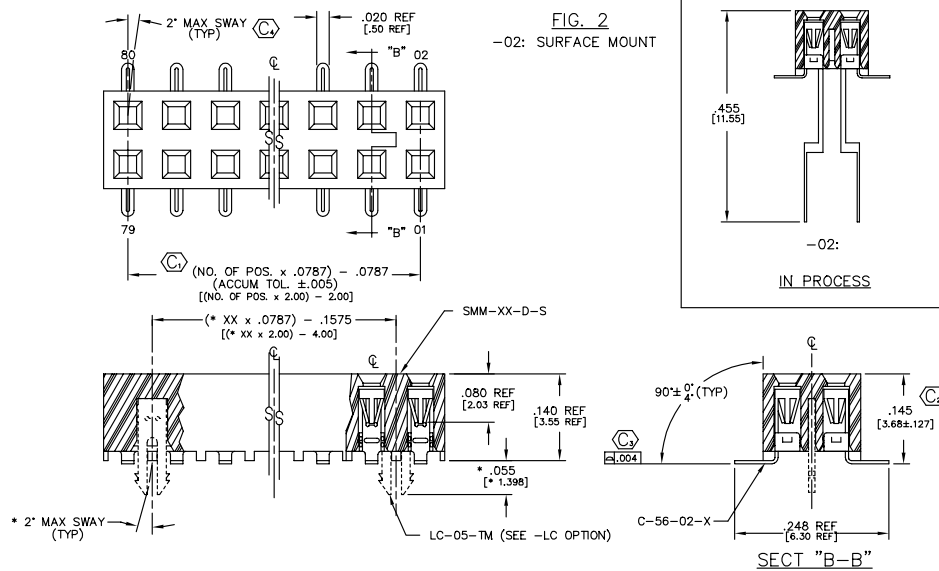
-01: THROUGH HOLE



SECT "A-A"

FIG. 2

-02: SURFACE MOUNT



SECT "B-B"

DIMENSIONS ARE IN INCHES UNLESS OTHERWISE NOTED		TOLERANCES ARE:		TITLE:	DWG NO:
ONE PLACE DECIMALS: ± .1	THREE PLACE DECIMALS: ± .005	FOUR PLACE DECIMALS: ± .0020	ANGLES ± 1°	2 mm SOCKET STRIP	SMM-1XX-XX-XX-D-XX-X-XX-XX
TWO PLACE DECIMALS: ± .01					SHEET 1 OF 2

SMM-1XX-XX-XX-D-XX-X-XX-XX

NOTES:

- RETENTION FORCE IN BODY TO BE: 1 lbs. MIN
- INSERTION FORCE TO BE: 3.0 oz. MAX.
- WITHDRAWAL FORCE TO BE: 0.5 oz. MIN.
- ⊙ REPRESENTS CRITICAL DIMS. FOR STATISTICAL PROCESS CONTROL.
- ⊙ DIMS ARE IN METRIC AND ARE NOT CONTROLLING DIMS.
- "-LC" OPTION FOR A 02 POSITION WILL HAVE ONLY ONE LOCKING CLIP (LC-05-T).
- "END WALLS" AFTER CUTTING SHOULD BE .017 ± .005.
- FOR -01 LEAD STYLE, LAYER PACKAGE POSITIONS -01 THRU -04.
- FOR -02 LEAD STYLE WITHOUT PICK & PLACE PAD, LAYER PACKAGE POSITION -02 ONLY.
- 02 THRU -05 POSITION WITH -K OR -P TO BE PACKAGED IN -TR ONLY. -06 THRU -40 POSITION AVAILABLE IN TUBE OR -TR PACKAGING.
- .010" MAX CUT FLASH.
- NO FLASH ALLOWED IN SOCKET OR EXTENDING BELOW LEADS.

- NO. OF POS. PER ROW THROUGH HOLE: -01 THRU -40 SURFACE MOUNT: -02 THRU -40
- LEAD STYLE
-01: THROUGH HOLE (C-56-01-X)
-02: SURFACE MOUNT (C-56-02-X)
- PLATING OPTION
-S: SELECTIVE (USE C-56-XX-S)
-F: FLASH GOLD (USE C-56-XX-F)
-P: GOLD FLASHED PALLADIUM NICKEL (USE C-56-XX-P)
-H: HEAVY GOLD (USE C-56-XX-H)
-SM: HEAVY SELECTIVE GOLD, MATTE TIN TAIL (USE C-56-XX-S)
-FM: FLASH SELECTIVE GOLD, MATTE TIN TAIL (USE C-56-XX-F)
- ROW OPTION
-D: DOUBLE ROW (USE SMM-XX-D-S)

- POLARIZING OPTION INDICATE POSITION (USE PR-07-N)
- OPTION 1 TAPE & REEL MAX. POSITIONS AVAILABLE: 27 VERTICAL / 28 HORIZONTAL (SEE SHEET 2)
- OPTION 2 -P: PICK AND PLACE PAD (USE PPP-03) (SEE FIG 3)
-K: POLYAMIDE FILM PAD (USE K-500-300) (.005 [0.13] THICKNESS WITH SILICONE ADHESIVE, SEE FIG 4)
(2 POS MIN, SEE NOTE 10) (AVAILABLE ON LEAD STYLE -02 ONLY)
- OPTION 1 -LC: LOCKING CLIP (USE 2 LC-05-TM) (AVAILABLE ONLY WITH LEAD STYLE -02, SEE * DIMS, SEE NOTE 6, SEE FIG 2)

"R" = No of Pos x .0787 [2.00]
"S" = {("R" - .394) / 2} ± .020

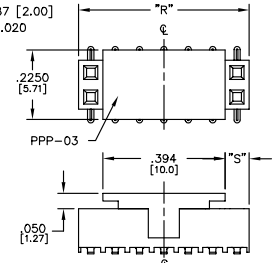
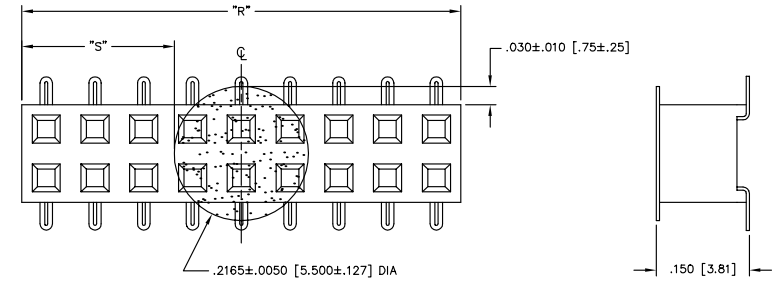


FIG. 3
-P: PICK AND PLACE PAD (PLACE PPP-03 ABOUT C.L. AS SHOWN) (SEE NOTE 10)



NOTE: "R" = USED MEASURED DIMENSION (REF)
"S" = {("R" - .2165 [5.50]) / 2} ± .020 [.51]

FIG. 4

-K: POLYAMIDE FILM PAD [2 POSITION MINIMUM, SEE NOTE 10]

PROPRIETARY NOTE
THIS DOCUMENT CONTAINS INFORMATION CONFIDENTIAL AND PROPRIETARY TO SAMTEC INC. AND SHALL NOT BE REPRODUCED OR TRANSMITTED IN ANY FORM OR BY ANY MEANS, ELECTRONIC OR MECHANICAL, INCLUDING PHOTOCOPYING, RECORDING, OR BY ANY INFORMATION STORAGE AND RETRIEVAL SYSTEM, WITHOUT THE WRITTEN CONSENT OF SAMTEC INC.

ENSPROD ASSEMBLY/USAM
SMM-1XX-XX-XX-D-XX-X-XX-XX-ASM

samtec

520 PARK EAST BLVD., NEW ALBANY, INDIANA 47150
PHONE (812) 944-6733 P.O. BOX 1147
CODE 55322

MADE BY: KOLB 5-21-91 DIRECT APPROVAL
DEM

SMM-1XX-XX-XX-D-XX-X-XX-XX
SHEET 1 OF 2