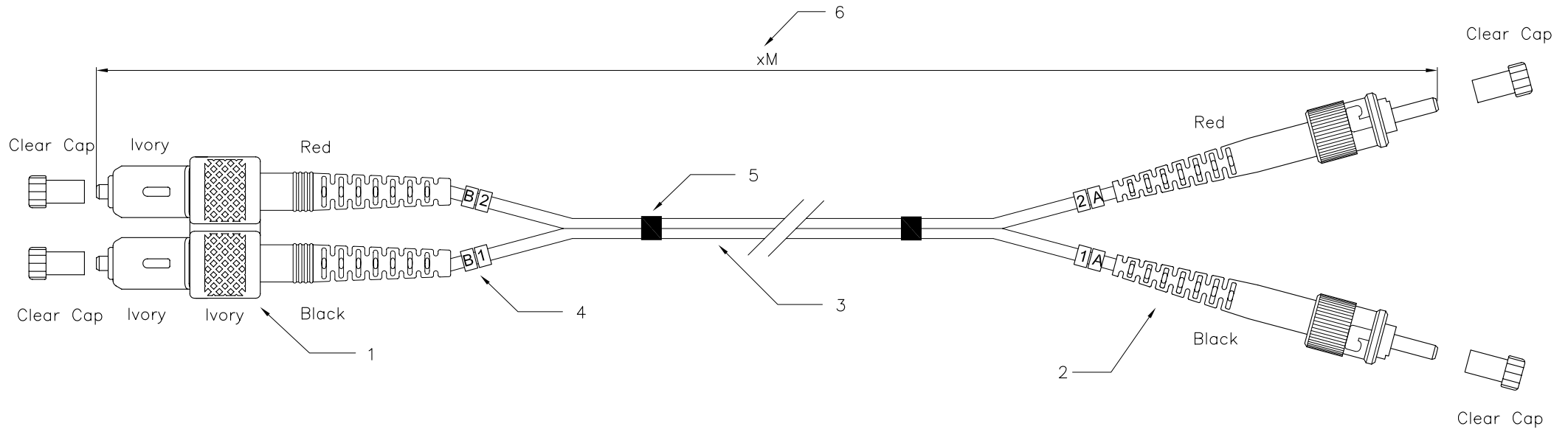


Part No.	(6)Length	Part No.	(6)Length
3511-0.5	0.5M	3511-10	10M
3511-1	1M	3511-15	15M
3511-2	2M	3511-20	20M
3511-3	3M	3511-30	30M
3511-5	5M		



Specification:

1. Connector Type : II SC/PC Multimode
2. Connector Type : ST/PC Multimode
3. Cable Type :
3-1 Zipcord cable, $\phi 3.0\text{mm}$, 62.5/125um Multimode
3-2 Calbe Jacket : Gray color, LSZH material
4. Cable Marker
5. Shrink Tube
6. Length : xM

Performance:

- a. Insertion Loss : $< 0.5 \text{ dB}$
- b. Fiber Extension : $-0.05\text{um} < H < +0.05\text{um}$
- c. Ferrule End-face Radius : $10 < R < 25\text{mm}$
- d. Apex Offset : $< 50\text{um}$
- e. Increase in insertion loss after 500 mating : 0.2 dB Max.
- f. Operation Temperature : $-20^\circ \text{ to } +70^\circ$
- g. Storage Temperature : $-40^\circ \text{ to } +80^\circ$

RoHS Compliant

	DSGN	CSQ	30.MAY.2007	ITEM NO: 3511
	CHK	Maer	30.MAY.2007	
	UNIT	M/M	APPR	Yty
SCALE	1/1	SC to ST Duplex patch cord		
DWG NO: 3511	Videk Ltd			