



## Cord retaining strain relieve



4700.00XX



0888.0021

**Description**

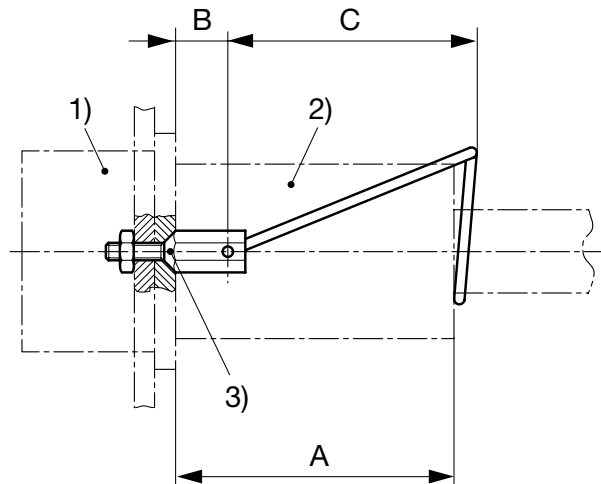
- Front-side:  
Screw-on from front side
- 1 Function:  
Protection against accidental disconnection of the plug

**References**

[General Product Information](#)

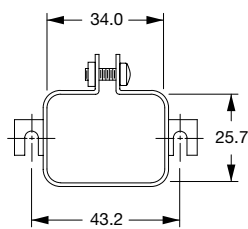
**Weblinks**

[Approvals](#), [RoHS](#), [CHINA-RoHS](#), [e-Store](#), [SCHURTER-Stock-Check](#), [Distributor-Stock-Check](#)

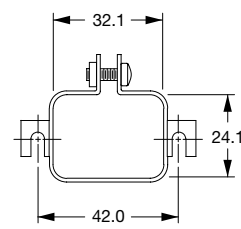
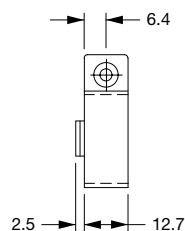
**Dimensions**

(Details see overview table and table of variants)

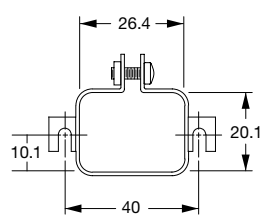
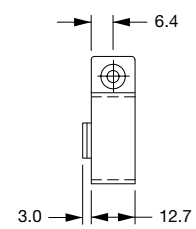
1) Inlet/Outlet      2) Plug/Connector      3) Design



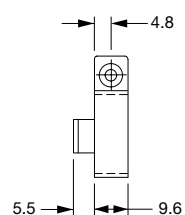
0888.0019

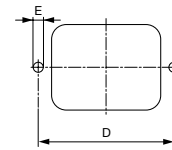


0888.0020

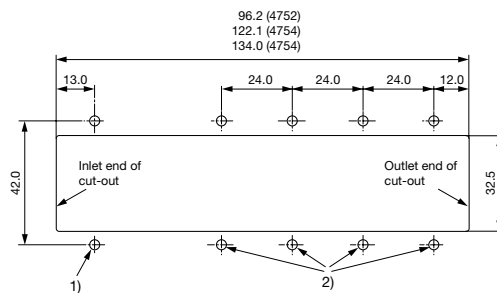


0888.0021





(Details see overview table and table of variants)  
Holes according inlet/outlet dimensions centered to respectively inlet/outlet



(Details see overview table)

Type	Appliance inlet/outlet							Cord plug/connector								
	Snap-in Mounting	Screw-on Mounting	Mounting from Frontside	Mounting from Rearside	Outlet	Inlet	Panel Thickness	Type	4781	4782	4795	4732	4735	4796	3020	302U
4707		*	*			*		B	B							
4721		*	*			*						D				
4721		*	*			*							F			
4723	*		*			*						E				
4723	*		*			*							G			
4752	*		*			*						E				
4752	*		*			*							G			
4754	*		*			*						E				
4754	*		*			*	*						G			
4754	*		*			*	*	H	H						Z	Z
4758	*		*			*	*					E				
4758	*		*			*	*						G			
4758	*		*			*	*	H	H						Z	Z
4793		*	*			*	*					L				
4797	*		*			*	*									L
4797		*	*			*	*									J
4798		*	*			*	*					K				
5110	*		*			*	*	A	A							
5110		*	*			*	*	C	C						Z	Z
5120	*		*			*	*	G	G						Z	Z
5120		*	*			*	*	G	G						Z	Z
5120		*	*		*	*	>5mm	E	E						Z	Z
5120		*	*		*	*	<3mm	G	G						Z	Z
5150	*		*			*	*	G	G						Z	Z
5150		*	*			*	*	G	G						Z	Z
5150		*	*		*	*	>5mm	E	E						Z	Z
5150		*	*		*	*	<3mm	G	G						Z	Z
5130	*		*			*	*					L				
5130		*	*			*	*					L				
5130		*	*		*	*	<3mm					L				
5200		*	*			*	*	B	B							
5220		*	*			*	*	B	B							
6100	*		*			*	*	A	A							
6100		*	*			*	*	C	C						Z	Z
6110	*		*			*	*	A	A							
6110		*	*			*	*	C	C						Z	Z
6135	*		*			*	*	A	A							
6200	*		*			*	*	A	A							
6200		*	*			*	*	B	B							
6220	*		*			*	*	A	A							
6220		*	*			*	*	B	B							
6600	*		*			*	*					E				
6600	*		*			*	*						G			
6600		*	*			*	*					D				
6600		*	*			*	*						F			
6610	*		*			*	*					E				
6610	*		*			*	*						G			
0723		*	*			*	*									J
C20F	*		*			*	*					L				
C20F		*	*			*	*					L				
C20F		*	*		*	*	<3mm					L				
CD	*		*			*	*	A	A							
CE	*		*			*	*	A	A							
CG	*		*			*	*	A	A							
DA22		*	*		*	*	*	H	H							
DC11	*		*			*	*	A	A							
DC11		*	*			*	*	B	B							
DC12	*		*			*	*	A	A							
DC12		*	*			*	*	B	B							
DC12		*	*		*	*	*	A	A							
DC21		*	*			*	*	G	G						Z	Z
DC22		*	*		*	*	*	H	H							
DD11		*	*			*	*	A	A							
DD11		*	*		*	*	<3mm	A	A							
DD12		*	*			*	*	A	A							
DD12		*	*			*	<3mm	A	A							
DD21		*	*			*	<3mm	A	A							
DD22		*	*			*	<3mm	A	A							

							Cord plug/connector									
							Type	4781	4782	4795	4732	4735	4796	3020	302U	
							Dimension A	61.5	61.5	57.0	55.5	60.0	58.0	-	-	
							Plug	.	.	.	.	.	.	.	.	.
							Connector	.	.	.	.	.	.	.	.	.
Appliance inlet/outlet																
Type	Snap-in Mounting	Screw-on Mounting	Mounting from Frontside	Mounting from Rearside	Outlet	Inlet	Panel Thickness									
EC11		.	.			.					M			Z	Z	
EC12		.	.	.		.					M			Z	Z	
EF11		.	.	.		.					M			Z	Z	
EF12		.	.	.		.					M			Z	Z	
EG11		.	.	.		.					M			Z	Z	
EG12		.	.	.		.					M			Z	Z	
FELCOM 54	.		.		.			A	A							
FELCOM 54	.		.		.					E						
FELCOM 54	.		.		.						G					
FELCOM 64	.		.		.			A	A							
FELCOM 64	.		.		.					E						
FELCOM 64	.		.		.						G					
KD	.	.	.		.			A	A							
KE	.	.	.		.			A	A							
KEA	.	.	.		.			A	A							
KEA	.	.	.		.			B	B							
KEB I	.	.	.		.			A	A							
KEB I	.	.	.		.			B	B							
KEB II	.	.	.		.			A	A							
KEC	.	.	.		.			A	A							
KFA	.	.	.		.			A	A							
KFA	.	.	.		.			B	B							
KFA	.	.	.	.	.			A	A							
KFB I	.	.	.		.			B	B							
KFB II	.	.	.		.			A	A							
KFC	.	.	.		.			A	A							
KFS	.	.	.		.			C	C				Z	Z		
KFX	.	.	.		.			C	C				Z	Z		
KG	.	.	.		.			A	A							
KM	.	.	.		.			A	A							

## Variants

Kit	Design	B	C	D	E	Order Number
A	Flat head	8	45.5	36	3.4	4700.0001
B	Countersunk	9.5	45.5	36	3.4	4700.0002
C	Countersunk	8	45.5	40	3.4	4700.0003
D	Countersunk	4	40	40	3.4	4700.0004
E	Flat head	4.5	40	40	3.4	4700.0005
F	Countersunk	4	45.5	40	3.4	4700.0006
G	Flat head	4.5	45.5	40	3.4	4700.0007
H	Flat head	5.5	45.5	40	3.4	4700.0008
J	Countersunk	8	37.5	45	3.4	4700.0009
K	Countersunk	6.6	37.5	42	3.4	4700.0010
L	Flat head	5.5	37.5	42.5	3.4	4700.0011
M	Flat head	5.5	40	42.5	3.4	4700.0012
X	Flat head	-	-	43.2	-	0888.0019
Y	Flat head	-	-	42	-	0888.0020
Z	Flat head	-	-	40	-	0888.0021

Set see Cord retaining Selector Chart

**Packaging unit** 50 Pcs