

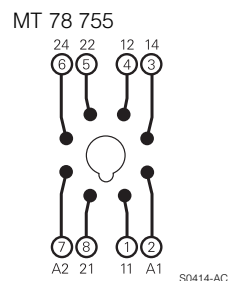
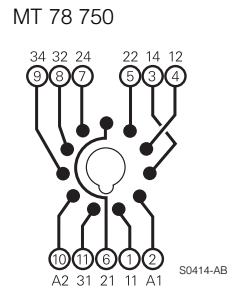
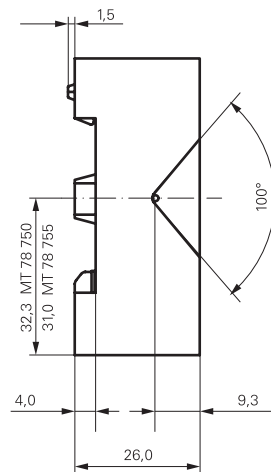
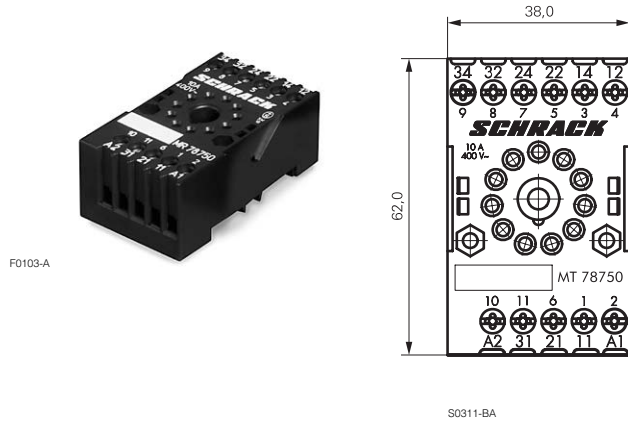
**Accessories Multimode Relay MT**

- Snap-on mounting on DIN-rail
- Screw mounting
- Pozidrive screws with rising clamp terminals
- Logical layout of input/output connections
- White marking area
- Din-rail sockets and accessories: RoHS compliant (Directive 2002/95/EC)

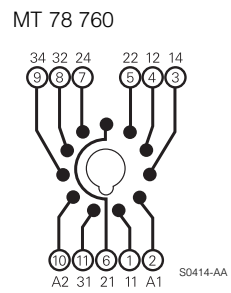
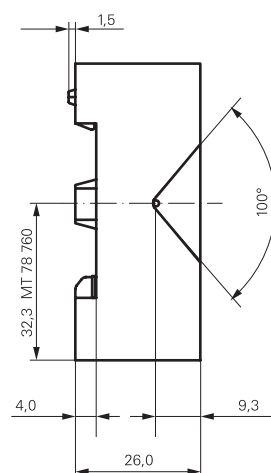
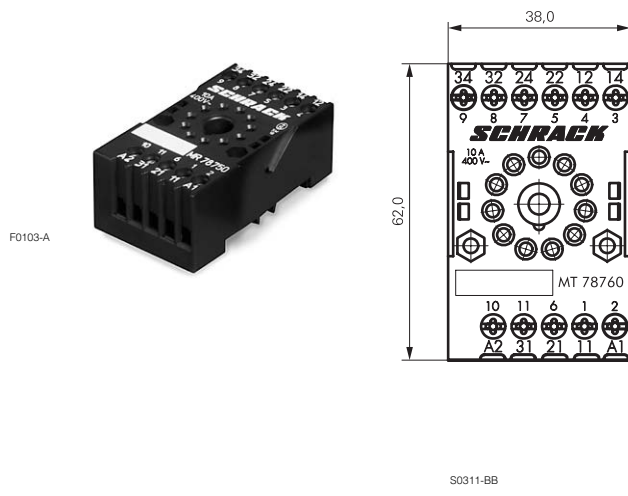


**MT DIN-rail sockets with screw-type terminals**

**MT 78 750** MT3 DIN-rail socket with screw-type terminals, 11-pin  
**MT 78 755** MT2 DIN rail socket with screw type terminals, 8-pin



**MT 78 760** MT3 DIN-rail socket with screw-type terminals, 11-pin

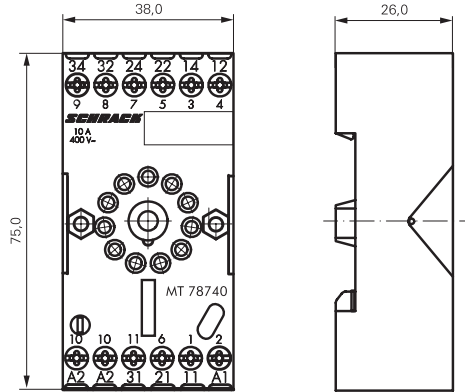


**Accessories Multimode Relay MT (Continued)**

**MT 78 740** MT3 DIN-rail socket with screw-type terminals, 11-pin  
**MT 78 745** MT2 DIN rail socket with screw type terminals, 8-pin



F0200-A



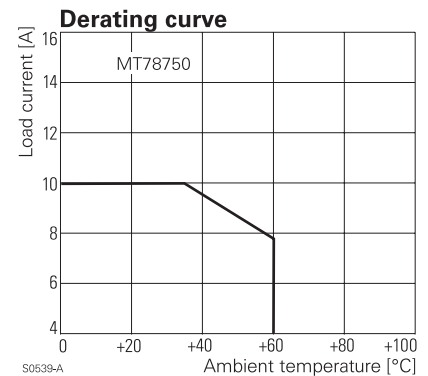
Socket system MT 78 740 and MT 78 745  
 ■ 8/11 pin socket for MT2 / MT3  
 ■ Double A2 screw for simple further connection of coil supply

S0366-A

**Approvals**

VDE REG.-Nr. 6182, cULus E135149

| Technical data                            |  | MT 78 750/755/760/740/745 |
|---|--|---------------------------|
| Rated current                             |  | 10 A                      |
| Rated voltage / max.switching voltage AC  |  | 240/400 VAC               |
| Dielectric strength coil-contact circuit  |  | 2500 V <sub>rms</sub>     |
| open contact circuit                      |  | 1500 V <sub>rms</sub>     |
| adjacent contact circuits                 |  | 2500 V <sub>rms</sub>     |
| Clearance / creepage coil-contact circuit |  | ≥ 2.8/4 mm                |
| Material group of insulation parts        |  | ≥ IIIa                    |
| Insulation to IEC 60664-1                 |  |                           |
| Type of insulation coil-contact circuit   |  | basic                     |
| open contact circuit                      |  | functional                |
| adjacent contact circuits                 |  | basic                     |
| Rated insulation voltage                  |  | 250 V                     |
| Pollution degree                          |  | 2                         |
| Rated voltage system                      |  | 230/400 V                 |
| Overvoltage category                      |  | III                       |
| RoHS - Directive 2002/95/EC               |  |                           |
| DIN-rail sockets and retainers:           |  | compliant                 |
| Degree of protection DIN 40050            |  | IP20                      |
| Ambient temperature range                 |  | -20...+80°C               |
| Terminals                                 |  | screw                     |
| Terminal screw torque acc. IEC 61984      |  | 0.5 Nm                    |
| max.                                      |  | 0.7 Nm                    |
| Wire cross section                        |  |                           |
| single wire                               |  | 2 x 2.5 mm <sup>2</sup>   |
| fine wire                                 |  | 2 x 2.5 mm <sup>2</sup>   |
| with bootlace crimp (DIN 46228/1)         |  | 2 x 1.5 mm <sup>2</sup>   |
| Insertion cycles                          |  | A (10)                    |
| Max. Insertion Force total                |  | 100 N                     |
| Mounting distance                         |  | 0, dense packing          |
| Weight MT 78 750/760                      |  | 54 g                      |
| MT 78 755                                 |  | 47 g                      |
| MT 78 740                                 |  | 62 g                      |
| MT 78 745                                 |  | 56 g                      |
| Packaging unit                            |  | 25 pcs                    |



S0539-A

**DIN-rail sockets with screw-type terminals**

| Type             |   | Part Number |
|------------------|---|-------------|
| <b>MT 78 750</b> | DIN-rail socket with screw-type terminals 11-pin  | 1415035-1   |
| <b>MT 78 755</b> | DIN-rail socket with screw-type terminals 8-pin   | 3-1415035-1 |
| <b>MT 78 760</b> | DIN-rail socket with screw-type terminals 11-pin  | 8-1415034-1 |
| <b>MT78 740</b>  | DIN-rail socket with screw-type terminals, 11-pin | 8-1393163-3 |
| <b>MT78 745</b>  | DIN-rail socket with screw-type terminals, 8-pin  | 8-1393163-4 |

**Accessories for MT 78 750, MT 78 755, MT 78 760, MT 78 740, MT 78 745**

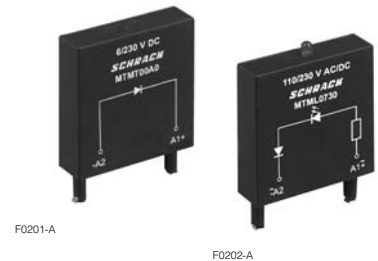
| Type                                     | Part Number |
|--|-------------|
| <b>MT 28 800</b> Metal retaining clip MT | 8-1393163-0 |

**LED and Protection modules for MT 78 740, MT 78 745**

| Type   | Part Number |
|--|-------------|
| <b>MTM T0 0A0</b> Protection diode 1N4007 (A1+, A2-) | 7-1393163-6 |
| <b>MTM U0 524</b> RC-network 6...24 VAC              | 7-1393163-7 |
| <b>MTM U0 730</b> RC-network 110...230 VAC           | 7-1393163-8 |

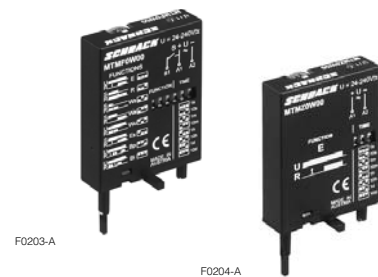
**LED**

|   |             |
|---|-------------|
| <b>MTM L0 024</b> red LED 24 VAC / VDC          | 7-1393163-4 |
| <b>MTM G0 024</b> green LED 24 VAC / VDC        | 6-1419149-6 |
| <b>MTM L0 730</b> red LED 110...230 VAC / VDC   | 7-1393163-5 |
| <b>MTM G0 730</b> green LED 110...230 VAC / VDC | 6-1419149-7 |



**Function modules for MT 78 740, MT 78 745**

| Type                            | Part Number |
|---------------------------------|-------------|
| <b>MTM Z0 W00</b> Delay ON      | 7-1393163-9 |
| <b>MTM F0 W00</b> Multifunction | 7-1393163-3 |



**Technical data - Function modules**

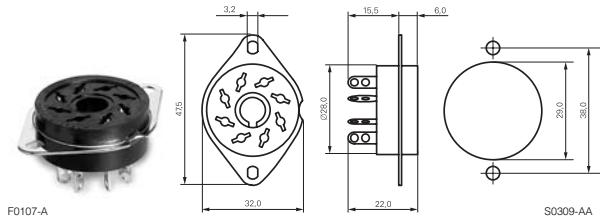
|                             |   |
|-----------------------------|---|
| Nominal voltage             | 24...240 VDC / VAC                      |
| Mains frequency             | 48...63 Hz                              |
| Precision of time setting   | + 0,5 %                                 |
| Readiness for repetition    | ≤ 0,5 % or 5 ms                         |
| Influence of temperature    | ≤ 0,1 %/°C                              |
| Time range switchable       | 0,05s...240h in 8 ranges                |
| RoHS - Directive 2002/95/EC | compliant as per product date code 0515 |
| Ambient temperature         | -25...+55 °C                            |

**Function modules for MT 78 740, MT 78 745**

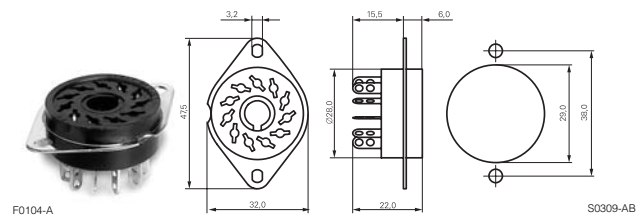
| Function                             | U/t | R |
|--------------------------------------|-----|---|
| Delay ON                             |     |   |
| Delay OFF                            |     |   |
| single shot leading edge             |     |   |
| single shot trailing edge            |     |   |
| Delay ON triggered by signal contact |     |   |
| single shot                          |     |   |
| flasher starting with pause          |     |   |
| flasher starting with pulse          |     |   |

**MT sockets for PCB and with solder terminals MT 78 602/603/612/613**

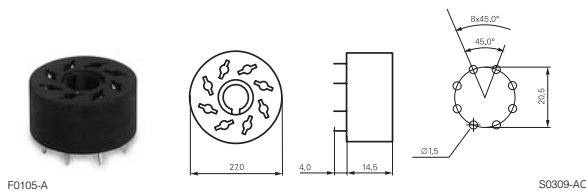
**MT 78 612** Socket 8-pin with solder terminals



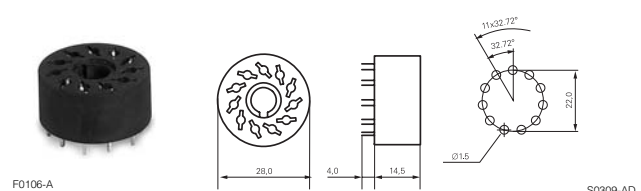
**MT 78 613** Socket 11-pin with solder terminals



**MT 78 602** Socket 8-pin with PCB terminals



**MT 78 603** Socket 11-pin with PCB terminals



| Technical data                            |                           | MT 78 602/603/612/613                   |
|---|---------------------------|---|
| Rated current                             |                           | 10 A                                    |
| Rated voltage / max.switching voltage AC  |                           | 240/400 VAC                             |
| Dielectric strength coil-contact circuit  | open contact circuit      | 2500 V <sub>rms</sub>                   |
|   | adjacent contact circuits | 1500 V <sub>rms</sub>                   |
|   |                           | 2500 V <sub>rms</sub>                   |
| Clearance / creepage coil-contact circuit |                           | ≥ 2.8/4 mm                              |
| Material group of insulation parts        |                           | ≥ IIIa                                  |
| Insulation to IEC 60664-1                 |                           |   |
| Type of insulation coil-contact circuit   |                           | basic                                   |
| open contact circuit                      |                           | functional                              |
| adjacent contact circuits                 |                           | basic                                   |
| Rated insulation voltage                  |                           | 250                                     |
| Pollution degree                          |                           | 2                                       |
| Rated voltage system                      |                           | 230/400                                 |
| Overvoltage category                      |                           | III                                     |
| RoHS - Directive 2002/95/EC               |                           |   |
| MT 78 602, MT 78 603                      |                           | compliant as per product date code 0517 |
| MT 78 612, MT 78 613                      |                           | compliant as per product date code 0543 |
| Degree of protection DIN 40050            |                           | IP20                                    |
| Ambient temperature range                 |                           | -40...+70°C                             |
| Terminals                                 |                           | pcb, solder terminals                   |
| Insertion cycles                          |                           | A (10)                                  |
| Max. Insertion Force total                |                           | 100 N                                   |
| Mounting distance                         |                           | 0, dense packing                        |
| Resistance to soldering heat              |                           | 270°C / 10 s                            |
| Weight                                    |                           | 7 g                                     |
| Packaging unit                            |                           | 25 pcs                                  |

**Sockets with solder and PCB terminals**

| Type   | Part Number |
|--|-------------|
| <b>MT 78 612</b> Socket 8-pin with solder terminals  | 7-1415043-1 |
| <b>MT 78 613</b> Socket 11-pin with solder terminals | 8-1415043-1 |
| <b>MT 78 602</b> Socket 8-pin with PCB terminals     | 9-1415043-1 |
| <b>MT 78 603</b> Socket 11-pin with PCB terminals    | 1415044-1   |