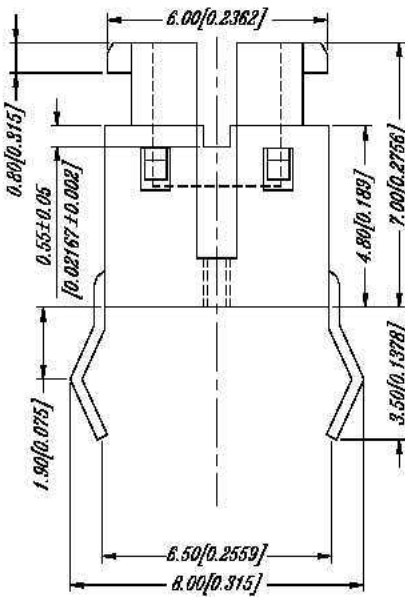
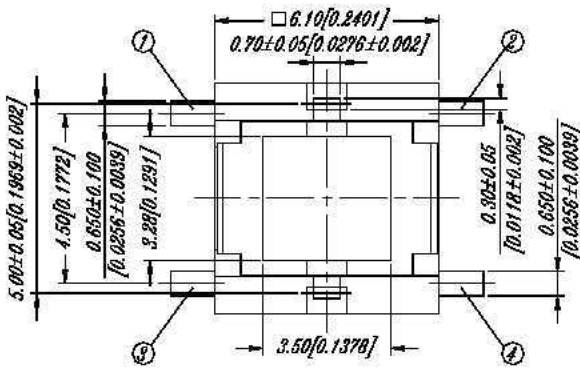
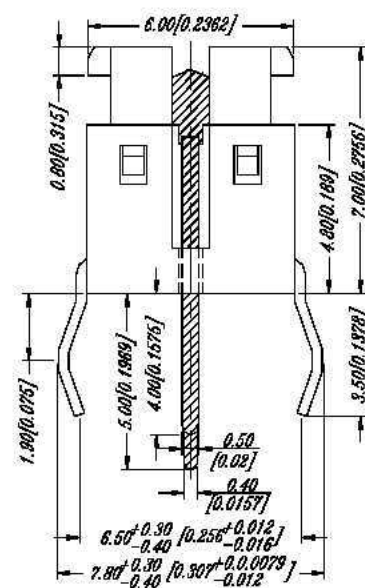
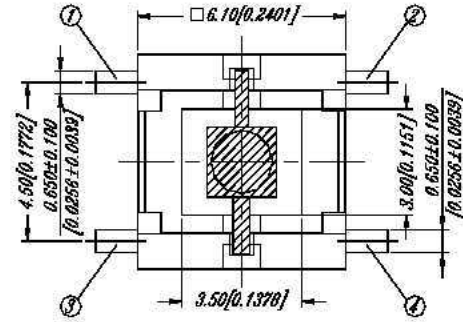


## TL(L)-6 SERIES

### DIMENSIONS

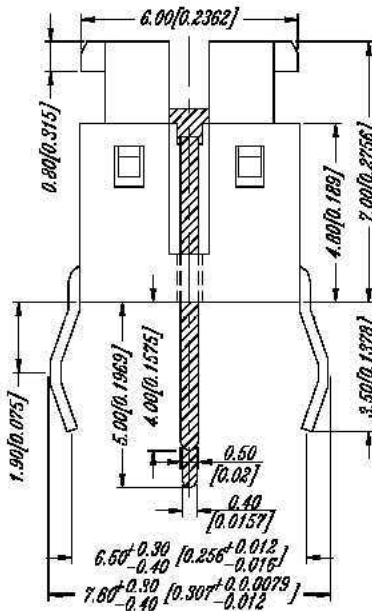
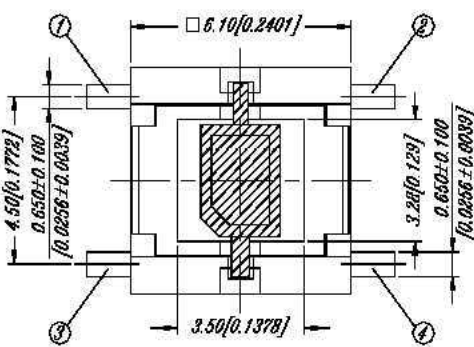
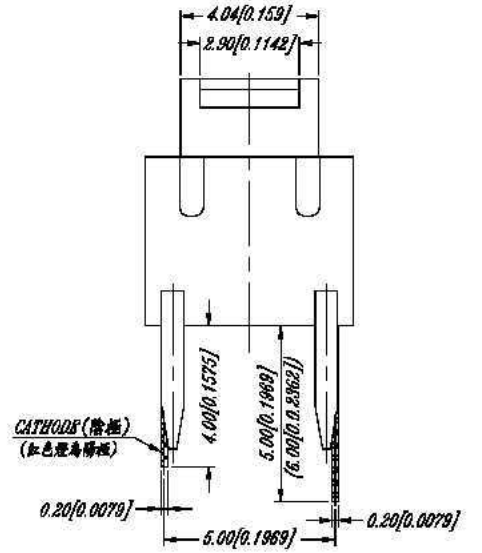
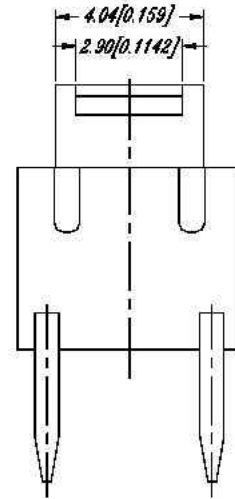


**TL-6**

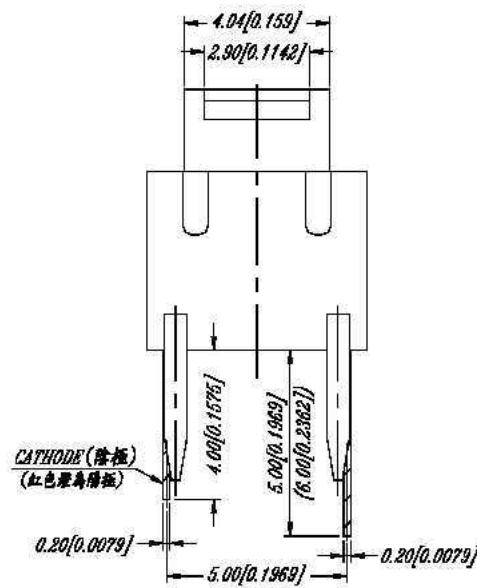


**TLL-6□B**

品名	荷重	顏色
TL-61	100 ± 50g	K-黑色
TL-62	160 ± 50g	N-棕色
TL-63	260 ± 50g	V-白色



**TL-6□A**



**TLL-63ARL**

產品名稱: 有加LED燈

LED燈端子腳長為6.0mm

LED燈顏色: R Red, B Blue, Y Yellow, W White, G Green

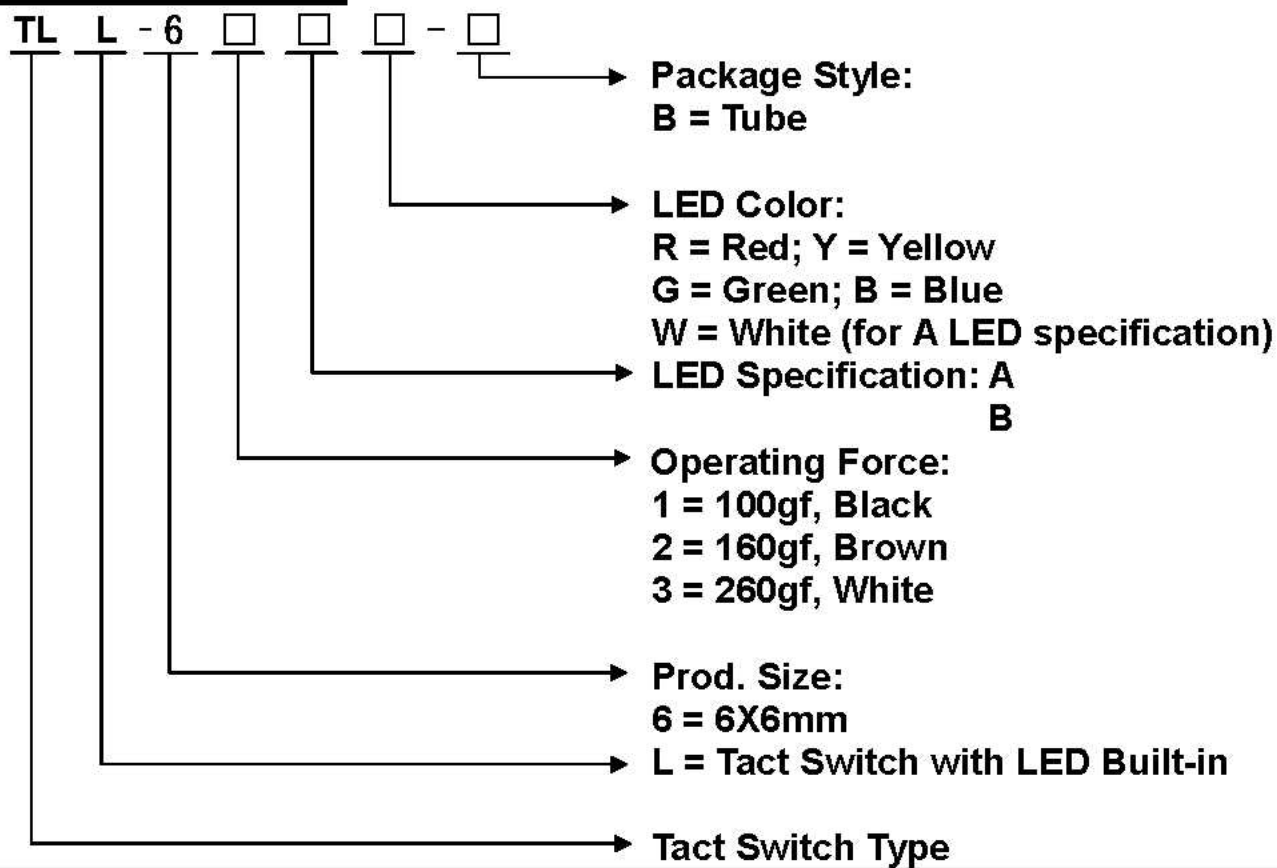
操作力(荷重): 1 100g, 2 160g, 3 260g

LED燈外觀型式: A, B

\*LED燈外觀型式未註明, 表示LED燈由客戶提供, 但客戶必須告知LED燈測試之電壓及電流

\*白燈外觀型式無B型式

## HOW TO ORDER



## SPECIFICATION

### △MECHANICAL

#### Operation Force:

100 ± 50gf TL(L)-61

160 ± 50gf TL(L)-62

260 ± 50gf TL(L)-63

Stroke: 0.20 + / - 0.10 mm

Operation Temperature: -25°C to +70°C

Storage Temperature: -30°C to +80°C

### △ELECTRICAL

Electrical Life: 200,000 cycles min. for TL(L)-61,62,63

Rating: 50mA , 12VDC

Contact Resistance: 100mΩ max.

Insulation Resistance: 100MΩ min. 500VDC

Dielectric Strength: 250VAC/ minute

Contact Arrangement: SPST

## MATERIALS

△CONTACT DISC: Stainless steel

△TERMINAL: Brass with silver plating

△BASE: LCP High-temp. thermoplastic

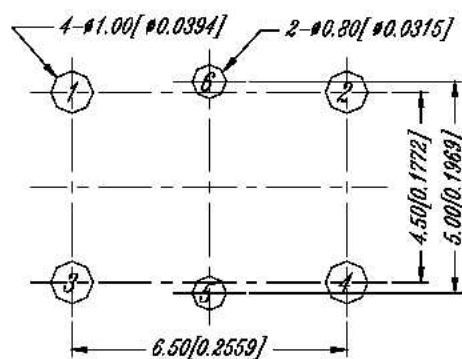
Color: Black

△STEM: NYLON High-temp. Thermoplastic

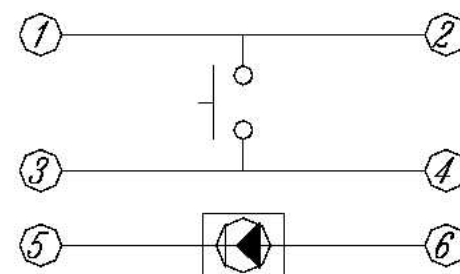
Color: Black / TL(L)-61

Brown / TL(L)-62

White / TL(L)-63



P.C.B LAYOUT



CIRCUIT DIAGRAM

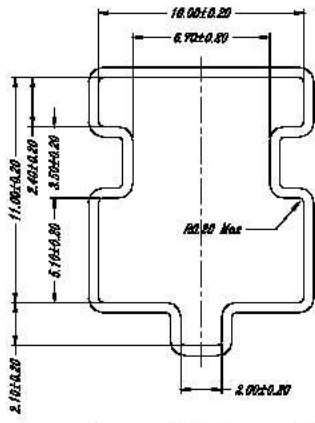
## SOLDERING PROCESS

△WAVE SOLDERING : Recommended solder temperature at 500°F(260°C) max. 5 seconds.

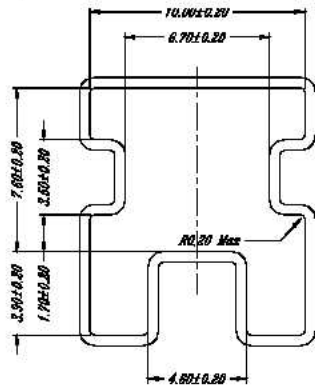
△HAND SOLDERING : Use a soldering iron of 30 watts, controlled at 608°F(320°C) approximately 2 seconds.

# PACKING

Part Number	Number Per Tube	
TL(L)-6	77	



**TLL-6**



**TL-6**