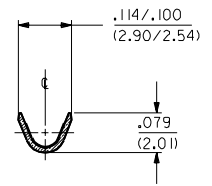
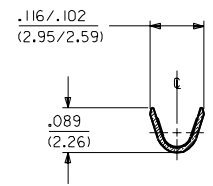
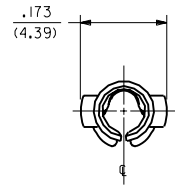
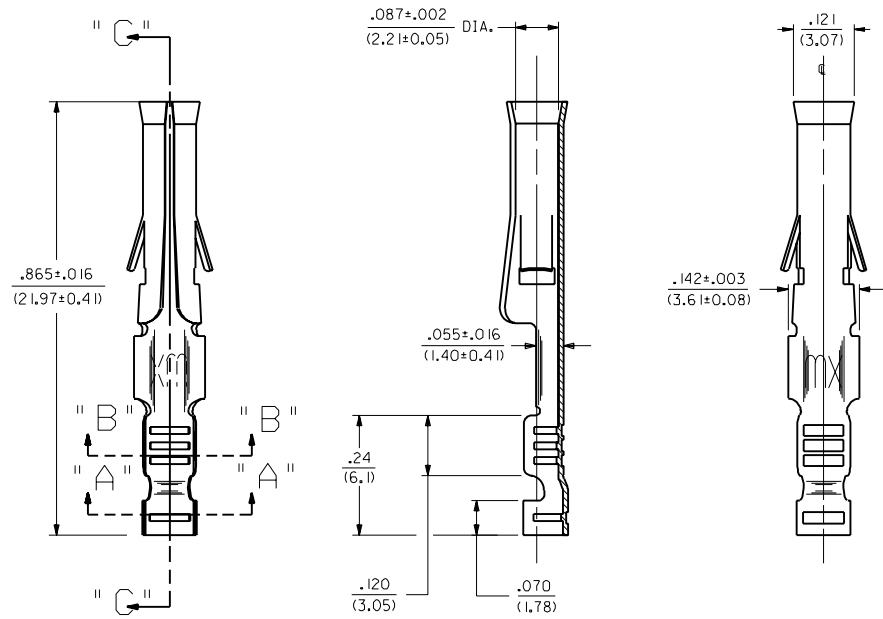


PART NO.	ENG. NO.
02-09-1138	2871-A(P90 I)
02-09-1139	2871-A(P90 I)L
-	-
-	-
-	-



SECTION "A-A" SECTION "B-B"



SECTION "C-C"

LEGEND

2871-A(****)*
 P=PREPLATE BLANK=POSTPLATE
 FINISH CODE
 FORM BLANK=STD. CHAIN L=LOOSE

- NOTES:
1. TERMINAL FOR USE WITH .093/(2.36) SERIES HOUSINGS AND WILL ACCEPT 22 - 24 AWG WIRE.
 2. INSERTION FORCE: 3.5 LBS. MAX. WHEN TERMINAL IS INSERTED INTO AN .093 SERIES HOUSING.
 3. CONTACT RETENTION: 20 LBS. MIN. FROM HOUSING.
 4. THIS PART CONFORMS TO PRODUCT SPEC. 02-09.

FINISH CODES:
 901 HOT TIN DIP .000020/(0.00051) MIN.

MATERIAL:
 CARTRIDGE BRASS, ALLOY #C26000,
 .010/(0.25) THICK, SPRING TEMPER



B	REVISE PER ECR US 0799	GC	2/14/95	RW
A	FINAL RELEASE ECR US 0857	GC	6/11/92	RW

DIMENSIONS SHOWN METRIC (INCH UNLESS OTHERWISE SPECIFIED TOLERANCES: ANGULAR ± 1/2°)		▽ = 0	▽ = 0	REVISE ONLY ON CAD SYSTEM	
TITLE		CRIMP TERM., FEMALE .093/(2.36) DIA. FOR 22 - 24 AWG WIRE			
MOLEX INCORPORATED LITTLE ROCK, AR 72644 U.S.A.		SHEET NO.	DATE		
SEE CHART		10 F 1	6/11/92		
PART NO. SD-2871-*		DRWG. NO.			
DRWG. BY: GWF	CHKD. BY: RW	FILE NAME: SD2871X1	THIS DRAWING CONTAINS INFORMATION THAT IS PROPRIETARY TO MOLEX INC. AND SHOULD NOT BE USED WITHOUT WRITTEN PERMISSION.		
APP'D. BY: GWF	SCALE: 6 : 1	DWG. NO.	DIV.:	SIZE:	CP C