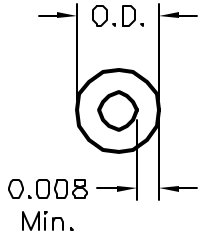


ALL RIGHTS RESERVED. NO PORTION OF THIS PUBLICATION, WHETHER IN WHOLE OR IN PART CAN BE REPRODUCED WITHOUT THE EXPRESS WRITTEN CONSENT OF SPC TECHNOLOGY.

REVISIONS

DOC. NO. SPC-F004 * Effective: 12/21/98 * DCP No: 680

DCP #	REV	DESCRIPTION	DRAWN	DATE	CHECKD	DATE	APPRVD	DATE
209	A	RELEASED	HYD	1/21/00	JC	2/16/00	DJC	2/24/00
944	B	CHG To tabular spec with mare parts	HYD	5/9/00	JC	5/9/00	JC	5/9/00



SPECIFICATIONS:

1. Temperature Rating: 105 °C
2. Insulation: Teflon
3. Conductor: Silver plated copper
4. Use: In office appliances where exposed to temperature not exceeding 105 °C or to oil at temperature not exceeding 60 °C and where not subjected to undue mechanical abuse.
5. Flame retardant and will satisfy the FR-1 designation of UL.



SPC Type NO.	AWG	STRANDING	NOM.O.D. INCHES (MM)	SPOOL SIZE (FEET)	COLOR
2909	24	19/36	0.043 (1.09)	100	BLACK
2910	24	7/32	0.043 (1.09)		
2911	22	7/30	0.050 (1.27)		
2912	22	19/34	0.050 (1.27)		
2913	20	19/32	0.058 (1.47)		
2917	20	7/28	0.058 (1.47)		
2934	24	19/36	0.043 (1.09)	1000	BLACK
2935	24	7/32	0.043 (1.09)		
2936	22	7/30	0.050 (1.27)		
2937	22	19/34	0.050 (1.27)		
2938	20	19/32	0.058 (1.47)		
2942	20	7/28	0.058 (1.47)		
3047	24	19/36	0.043 (1.09)	100	WHITE
3048	24	7/32	0.043 (1.09)		
3049	22	7/30	0.050 (1.27)		
3050	22	19/34	0.050 (1.27)		
3051	20	19/32	0.058 (1.47)		
3055	20	7/28	0.058 (1.47)		
3072	24	19/36	0.043 (1.09)	1000	WHITE
3073	24	7/32	0.043 (1.09)		
3074	22	7/30	0.050 (1.27)		
3075	22	19/34	0.050 (1.27)		
3076	20	19/32	0.058 (1.47)		
3080	20	7/28	0.058 (1.47)		
3097	24	19/36	0.043 (1.09)	100	RED
3098	24	7/32	0.043 (1.09)		
3099	22	7/30	0.050 (1.27)		
3100	22	19/34	0.050 (1.27)		
3101	20	19/32	0.058 (1.47)		
3105	20	7/28	0.058 (1.47)		
3122	24	19/36	0.043 (1.09)	1000	RED
3123	24	7/32	0.043 (1.09)		
3124	22	7/30	0.050 (1.27)		
3125	22	19/34	0.050 (1.27)		
3126	20	19/32	0.058 (1.47)		
3130	20	7/28	0.058 (1.47)		

SPC-F004-DWG

DISCLAIMER:
ALL STATEMENTS AND TECHNICAL INFORMATION CONTAINED HEREIN ARE BASED UPON INFORMATION AND/OR TESTS WE BELIEVE TO BE ACCURATE AND RELIABLE. SINCE CONDITIONS OF USE ARE BEYOND OUR CONTROL, THE USER SHALL DETERMINE THE SUITABILITY OF THE PRODUCT FOR THE INTENDED USE AND ASSUME ALL RISK AND LIABILITY WHATSOEVER IN CONNECTION THEREWITH.



SPC TECHNOLOGY

UNLESS OTHERWISE SPECIFIED, DIMENSIONS ARE FOR REFERENCE PURPOSES ONLY.

DRAWN BY:	DATE:
HISHAM ODIH	1/21/00
CHECKED BY:	DATE:
JOHN COLE	2/16/00
APPROVED BY:	DATE:
DANIEL CAREY	2/24/00

DRAWING TITLE:
HIGH TEMPERATURE HOOKUP WIRE STYLE 1212, 1213

SIZE	DWG. NO.	ELECTRONIC FILE	REV
A	TA-252	TA-252.DWG	B

SCALE: NTS U.O.M.: INCHES SHEET: 1 OF 1