

FLUKE®

Fluke Industrial Thermal Imagers

Models: Ti32, Ti25 and Ti10

Technical Data



High performance thermal imagers have never been this affordable. This rugged. Or, this easy to use ... until now.

We, at Fluke, are never satisfied leaving the best tools in the hands of the elite, which is why we recently added a new member to our thermal imaging family. The new Fluke Ti32 combines a powerful 320x240 sensor into the award winning, rugged design of the Ti25 and Ti10, delivering the first industrial grade, high performance thermal imager. The result is strikingly crisp, detailed images that, blended with our patented IR-Fusion®, are sure to make a lasting impression. Don't take our word for it—see it yourself!

Fluke thermal imagers are designed, tested, and manufactured in the USA, and feature a two year warranty. Work in a harsh environment? Don't worry. These meet the stringent quality standards that Fluke products are known for worldwide. Able to withstand a 2 meter (6.5 foot) drop, they also meet the requirements for an IP54 rating against dust and moisture.

For added versatility and special applications, the Ti32 includes two field-swappable, rechargeable batteries. Use the optional telephoto and wide-angle lenses to bring distant and wide views into sharp focus.

Incredible performance at unbelievably low prices.

Fluke. *Not just infrared, infrared you can use.®*



Industrial, mechanical, electromechanical and general building maintenance.



Process, refractory insulation, tank and vessel levels, steam systems and traps, pipes and valves, etc.



Electrical, unbalanced loads, overloaded systems, wiring mistakes or component failure, etc.

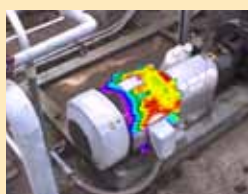
IR-Fusion® Technology, standard on ALL Fluke thermal imagers

More than picture in picture

Infrared images alone can be difficult to understand, which is why Fluke pioneered IR-Fusion, a revolutionary marriage of visible and infrared images never before seen in commercial or industrial thermal imagers. Automatically capturing a visible image with every infrared image allows you to always know exactly what you're looking at.

Not all fusion is created equal

Don't be fooled by imitators. Patented IR-Fusion is the only solution with physical parallax correction, enabling the perfect alignment and blending of both infrared and visible images. While many manufacturers have attempted to duplicate Fluke IR-Fusion, none have been able to match it. Turn to Fluke IR-Fusion to deliver the industry's best thermal images.



Detailed specifications

	Ti32	Ti25	Ti10
Temperature			
Temperature measurement range (not calibrated below -10 °C)	-20 °C to +600 °C (-4 °F to +1112 °F)	-20 °C to +350 °C (-4 °F to +662 °F)	-20 °C to +250 °C (-4 °F to +482 °F)
Temperature measurement accuracy	± 2 °C or 2 % (at 25 °C nominal, whichever is greater)		± 5 °C or 5 % (at 25 °C nominal, whichever is greater)
On-screen emissivity correction	Yes		–
On-screen reflected background temperature compensation	Yes		–
On-screen transmission correction	Yes	–	
Imaging performance			
Image capture frequency	9 Hz refresh rate or 60 Hz refresh rate depending upon model variation	9 Hz refresh rate	
Detector type	320 X 240 Focal Plane Array, uncooled microbolometer	160 X 120 Focal Plane Array, uncooled microbolometer	
Thermal sensitivity (NETD)	≤ 0.05 °C at 30 °C target temp. (50 mK)	≤ 0.1 °C at 30 °C target temp. (100 mK)	≤ 0.2 °C at 30 °C target temp. (200 mK)
Infrared spectral band	7.5 µm to 14 µm (long wave)		
Visual (visible light) camera	Industrial performance 2.0 megapixel	Industrial performance 1.3 megapixel	
Minimum focus distance	46 cm (approx. 18 in)		
Standard infrared lens type			
Field of view	23 ° x 17 °		
Spatial resolution (IFOV)	1.25 mRad		
Minimum focus distance	15 cm (approx. 6 in)		
Optional telephoto infrared lens type			
Field of view	11.5 ° x 8.7 °	–	
Spatial resolution (IFOV)	0.63 mRad	–	
Minimum focus distance	45 cm (approx. 18 in)	–	
Optional wide-angle infrared lens type			
Field of view	46 ° x 34 °	–	
Spatial resolution (IFOV)	2.50 mRad	–	
Minimum focus distance	7.5 cm (approx. 3 in)	–	
Focus mechanism	Manual, one-handed Smart Focus capability		
Image presentation			
Palettes			
Standard	Ironbow, Blue-Red, High Contrast, Amber Inverted, Hot Metal, Grayscale, Grayscale Inverted	Ironbow, Blue-Red, High Contrast, Amber, Hot Metal, Grayscale	Ironbow, Blue-Red, High Contrast, Grayscale
Ultra Contrast™	Ironbow Ultra, Blue-Red Ultra, High Contrast Ultra, Amber Ultra, Amber Inverted Ultra, Hot Metal Ultra, Grayscale Ultra, Grayscale Inverted Ultra	–	
Level and span	Smooth auto-scaling and manual scaling of level and span		
Fast auto toggle between manual and auto modes	Yes		–
Fast auto-rescale in manual mode	Yes		–
Minimum span (in manual mode)	2.5 °C (4.5 °F)		5 °C (9 °F)
Minimum span (in auto mode)	5 °C (9 °F)		10 °C (18 °F)
IR-Fusion® information			
Automatically aligned (parallax corrected) visual and IR blending	Yes		
Picture-In-Picture (PIP)	Three levels of on-screen IR blending displayed in center of LCD		100 % IR displayed in center of LCD
Full screen infrared	Three levels of on-screen IR blending displayed in center of LCD		100 % IR displayed in center of LCD
Color alarms (temperature alarms)	High-temperature alarm (user-selectable)	–	
Voice annotation	60 seconds maximum recording time per image; reviewable playback on imager		–
Image capture and data storage			
	The Ti32 allows user to adjust palette, blending, level, span, IR-Fusion® mode, emissivity, and reflected background temperature compensation, and transmission correction on a captured image before it is stored.	The Ti25 allows user to adjust palette, blending, level, span, IR-Fusion® mode, emissivity, and reflected background temperature compensation on a captured image before it is stored.	–
Image capture, review, save mechanism	One-handed image capture, review, and save capability		
Storage medium	SD Memory Card (2 GB memory card will store at least 1200 fully radiometric (.is2) IR and linked visual images each with 60 seconds voice annotations, or 3000 basic bitmap (.bmp) images, or 3000 jpeg (.jpeg) images; transferrable to PC via included multi-format USB card reader		
File formats	Non-radiometric (.bmp) or (.jpeg) or fully-radiometric (.is2)	Non-radiometric (.bmp) or fully-radiometric (.is2)	
	No analysis software required for non-radiometric (.bmp and .jpeg) files	No analysis software required for non-radiometric bitmap (.bmp) files	
Export file formats w/SmartView® software	JPEG, JPG, JPE, JFIF, BMP, GIF, DIB, PNG, TIF, and TIFF		
Memory review	Thumbnail view navigation and review selection	Sequential image navigation and review	

General specifications

Operating temperature	-10 °C to +50 °C (14 °F to 122 °F)
Storage temperature	-20 °C to +50 °C (-4 °F to 122 °F) without batteries
Relative humidity	10 % to 95 % non-condensing
Display	9.1 cm (3.7 in) diagonal landscape color VGA (640 x 480) LCD with backlight and clear protective cover
Controls and adjustments	User selectable temperature scale (°C/°F) Language selection Time/Date set Emissivity selection (Ti32 and Ti25 only) Reflected background temperature compensation (Ti32 and Ti25 only) Transmission correction (Ti32 only) User selectable hot spot and cold spot, and center point on the image (other custom markers and shapes in SmartView® software) (Ti32 and Ti25 only) High temperature alarm (Ti32 only) User selectable backlight: "Full Bright" or "Auto" Information display preference (Ti32 only)
Software	SmartView® full analysis and reporting software included
Batteries	Ti32: Two lithium ion rechargeable smart battery packs with five-segment LED display to show charge level Ti25 and Ti10: Internal rechargeable battery pack (included)
Battery life	Ti32: Four+ hours continuous use per battery pack (assumes 50 % brightness of LCD) Ti25 and Ti10: Three to four hours continuous use (assumes 50 % brightness of LCD)
Battery charge time	2.5 hours to full charge
AC battery charging	Ti32: Two-bay ac battery charger (110 V ac to 220 V ac, 50/60 Hz) (included), or in-imager charging. AC mains adapters included. Optional 12 V automotive charging adapter. Ti25 and Ti10: AC adapter/charger (110 V ac to 220 V ac, 50/60 Hz) (included), charges battery while imager is operating or turned off, ac mains adapters included.
AC operation	AC operation with included power supply (110 V ac to 220 V ac, 50/60 Hz). AC mains adapters included.
Power saving	Sleep mode activated after five minutes of inactivity, automatic power off after 30 minutes of inactivity
Safety standards	CSA (US and CAN): C22.2 No. 61010-1-04, UL: UL STD 61010-1 (2nd Edition), ISA: 82.02.01
Electromagnetic compatibility	Meets all applicable requirements in EN61326-1:2006
C Tick	IEC/EN 61326-1
US FCC	CFR 47, Part 15 Class B
Vibration	0.03 g2/Hz (3.8 grms), IEC 68-2-6
Shock	25 g, IEC 68-2-29
Drop	Ti32: 2 meter (6.5 feet) with standard lens, Ti25 and Ti10: 2 meter (6.5 feet)
Size (H x W x L)	Ti32: 27.7 cm x 12.2 cm x 17.0 cm (10.9 in x 4.8 in x 6.7 in), Ti25 and Ti10: 26.7 cm x 12.7 cm x 15.2 cm (10.5 in x 5.0 in x 6.0 in)
Weight (battery included)	Ti32 1.05 kg (2.3 lb), Ti25 and Ti10: 1.2 kg (2.6 lb)
Enclosure rating	IP54 (protected against dust, limited ingress; protection against water spray from all directions)
Warranty	Two-years (standard)
Recommended calibration cycle	Two-years (assumes normal operation and normal aging)
Supported Languages	Czech, English, Finnish, French, German, Italian, Japanese, Korean, Polish, Portuguese, Russian, Simplified Chinese, Spanish, Swedish, Traditional Chinese, and Turkish

Ordering information

FLK-Ti32 9Hz Industrial-Commercial Thermal Imager, 9 Hz
FLK-Ti32 60Hz Industrial-Commercial Thermal Imager, 60 Hz
Included with Ti32 models

Thermal imager with standard infrared lens; ac power supply and battery pack charger (including mains adapters); two, rugged lithium ion smart battery packs; SD memory card; multi-format USB memory card reader for downloading images into your computer; SmartView® software with free software upgrades for life; rugged, hard carrying case; soft transport bag; adjustable hand strap; printed users manual; warranty registration card; interactive training DVD.

FLK-Ti25 9Hz Thermal Imager

FLK-Ti10 9Hz Thermal Imager

Included with Ti25 and Ti10 models

Thermal imager with standard infrared lens, ac power supply/battery charger (including mains adapters); SD memory card; multi-format USB memory card reader for downloading images into your computer; SmartView® software with free software upgrades for life; rugged, hard carrying case; soft transport bag; adjustable hand strap; printed users manual; warranty registration card; interactive training DVD.

Optional accessories

FLK-LENS/TELE1 Telephoto Infrared Lens (Ti32 only)

FLK-LENS/WIDE1 Wide-angle Infrared Lens (Ti32 only)

TI-CAR-CHARGER Thermal Imager Vehicle Charger

TI-VISOR Thermal Imager Visor

BOOK-ITP Introduction to Thermography Principles Book

TI-TRIPOD Tripod Mounting Base Accessory



For more information call:

Fluke South East Asia Pte Ltd
 60 Alexandra Terrace #03-16
 The Comtech (Lobby D)
 Singapore 118502
 Tel +65 6799-5575
 Fax +65 6799-5577
 Email: info.asean@fluke.com
 Website: www.fluke.com.sg

Fluke India Representative Office
 Tel +91-98-20029770
 Fax +91-22-40700800
 Email: Suneel.Kapoor@fluke.com

Fluke Electronics (M) Sdn Bhd
 Tel +603 9223-1216
 Fax +603 9223-1218
 Email: info.msia@fluke.com

Fluke Taiwan Representative Office
 Tel +886-2-22783199
 Fax +886-2-22783179
 Email: info.tw@fluke.com

© 2009 Fluke Corporation. All rights reserved.
 Specifications subject to change without notice.
 Printed in SG, 8/2009 3467124C D-EN-N Rev CS