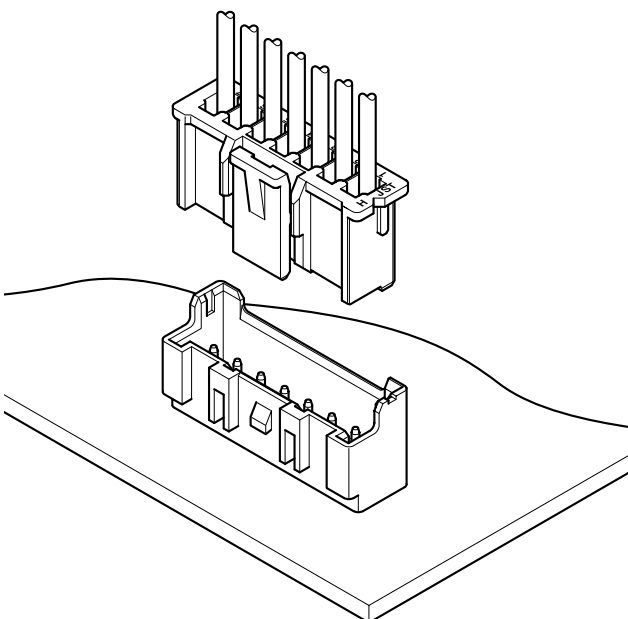
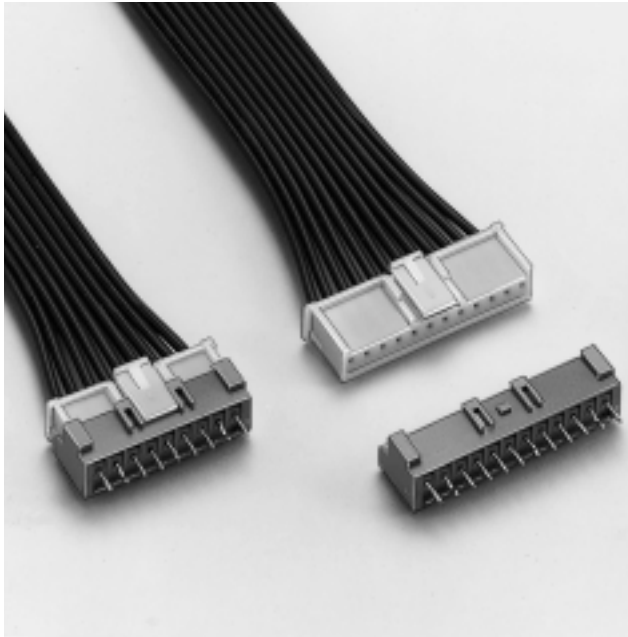


# XA CONNECTOR

Disconnectable Crimp style connectors



## Features

### • Locking device

The housing has a locking device to securely hold the header, preventing accidental disconnection because of external forces that might result from the routing of wires during assembly process or of vibration.

### • Solder crack preventive material

Header wafer is made of glass-filled PA66 nylon thus effective against the solder crack problem.

### • Low insertion force

Header pins are round and reflow-treated, which provides low insertion force.

### • Insertion guide mechanism

Header has housing insertion guides for easy and secure insertion.

### • Applicable to automatic board mounting machine

Radial taped or stick-mounted headers are also available for automatic component insertion machine.

### • Polarizing boss

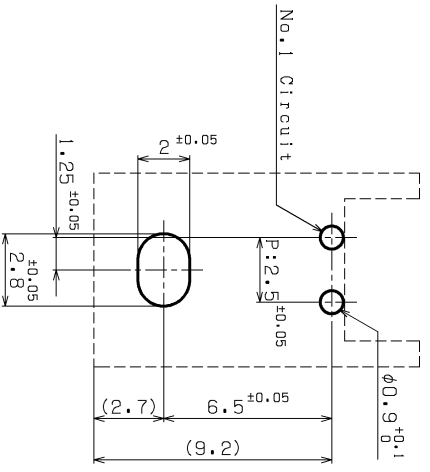
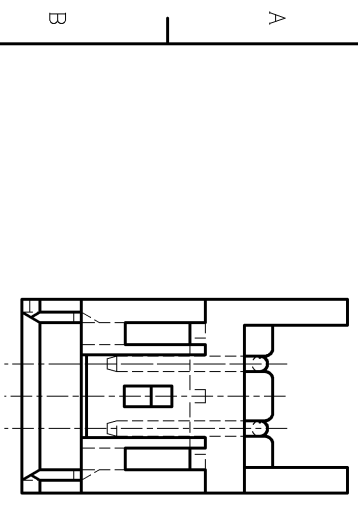
Headers with polarizing bosses are also available.

## Specifications

- Current rating: 3A AC DC (AWG#20)
- Voltage rating: 250V AC DC
- Temperature range: -25°C to +85°C  
(including temperature rise in applying electrical current)
- Relative humidity: 0 to 80%
- Contact resistance: Initial value/10m Ω max.  
After environmental testing/20m Ω max.
- Insulation resistance: 1,000M Ω min.
- Withstanding voltage: 1,000V AC/minute
- Applicable wire: AWG #28 to #20
- Applicable PC board thickness: 1.6mm (.063")
- \* Contact JST if Lead-Free product is required.
- \* Refer to "General Instruction and Notice when using Terminals and Connectors" at the end of this catalog.
- \* Contact JST for details.

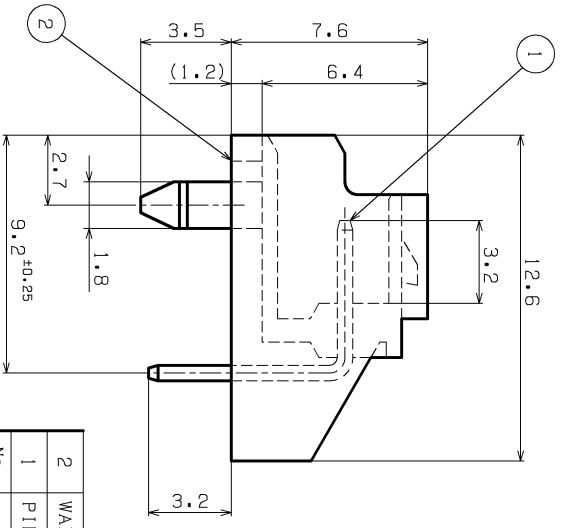
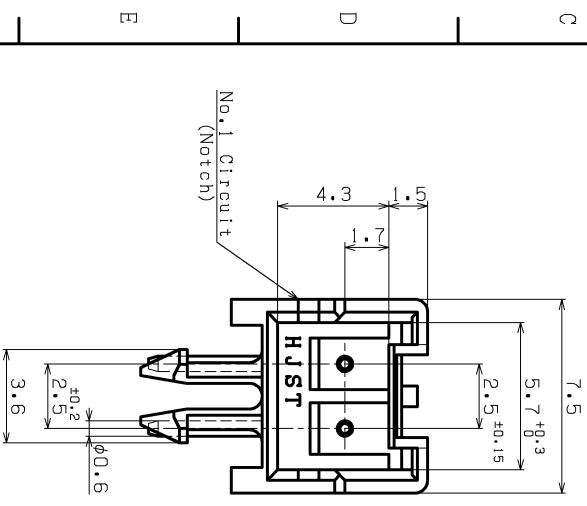
## Standards

- Recognized E60389
- 1 Certified LR20812
- 2 R9851220



NOTE  
 1. Unless otherwise specified,  
 tolerances are  $0 < L < 5.0: \pm 0.3$   
 $5.0 < L : \pm 0.4$

Recommendable P.C.Board hole layout  
 (Viewing from component side.)



REV.	DESCRIPTION	DATE	DESIGNED
△			

2	WAFER	66NYLON (G.F.)	UL94V-0, NATURAL
1	PIN	COPPER ALLOY	COPPER-UNDERPLATED TIN-PLATED
No.	PART NAME	MATERIAL	SURFACE FINISH
A3	METRIC	5:1	DEC. 21, 2004
APPROVED	CHECKED	DESIGNED	DRAWN
S.K		T.S	A.M
SERIES NAME		CUSTOMER	
XA CONNECTOR			
PART NO.		REMARKS	
S02B-XASS-1 (LF) (SN)			
DRAWING No.			
KRD-35898			
		RO	

**JST** J.S.T.MFG.CO.,LTD.

THIS DRAWING CONTAINS INFORMATION THAT IS PROPRIETARY TO J.S.T.  
 AND SHOULD NOT BE USED WITHOUT WRITTEN PERMISSION.