

R13 Round Rocker Switches 6A 250Vac



6A 250Vac T85

UL CSA 10A 125Vac & 6A 250Vac (For 16A call the factory)
UL 85°C, file E67774(S) CSA file LR45128

Single pole has μ contact gap
 Technical data on pages 4 & 5

Special products

Are made to order and can be supplied with a range of body and rocker/lens colours, print & lamp voltage

Call the factory for availability to your special requirements

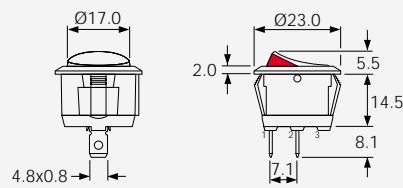
R13 112A2 - -

TERMINAL FUNCTION ROCKER BODY PRINT, COLOUR, VOLTAGE ETC

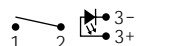
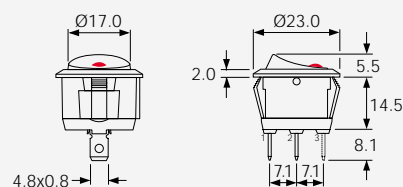
PRODUCT DETAILS



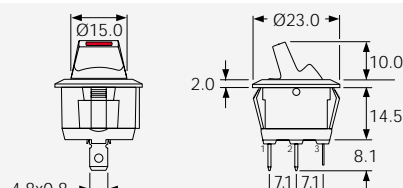
SP ON - OFF μ
 Bright colour ON signal
 Cat no.
R13 112A2 - -



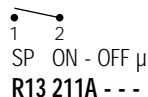
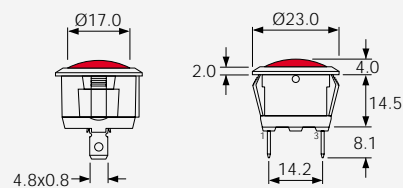
SP ON - OFF μ
 Lit Window
 Cat no.
R13 112B2 - -



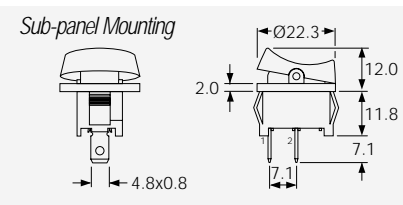
SP ON - OFF μ
 Paddle tip has red LED
 Cat no.
R13 112LP - -



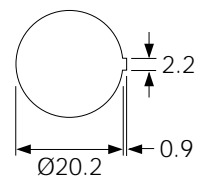
Indicator light
 Cat no.
R9 92B - - -



SP ON - OFF μ
R13 211A - - -
 SP ON - ON μ
R13 211C - - -



PANEL CUT-OUT (mm)



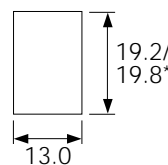
For R13 112A2
 R13 112B2
 R13 112LP
 R9 92B

Snap fixing into panel thickness up to 3.0



Protective cover L188

Snaps on to bodies (not R13 211 or R13 112LP) but reduces panel thickness by 0.6mm



For R13 211A
 R13 211C

* Dependent on panel thickness 0.75 - 3.0

