

Customer Information Sheet

DRAWING No.- D01-997XX01/21

SHEET 2 OF 2

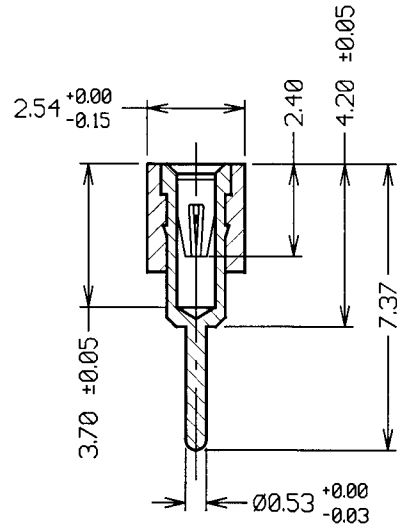
IF IN DOUBT - ASK

(C)

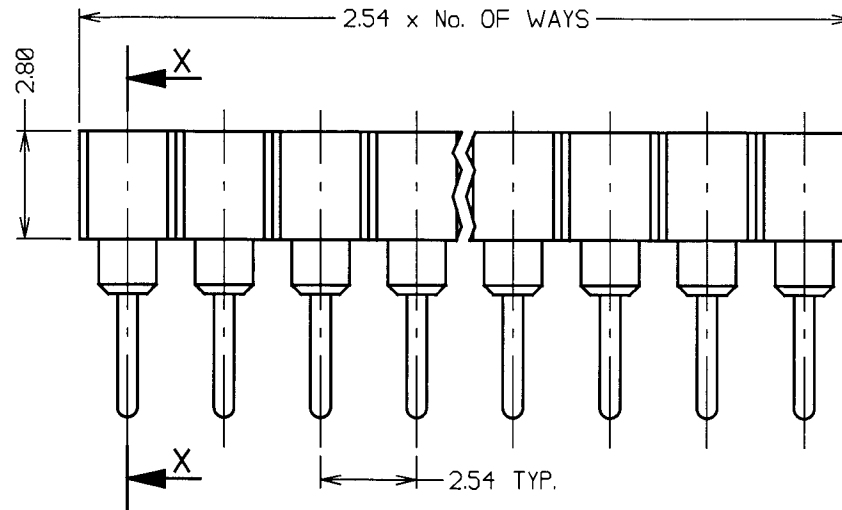
NOT TO SCALE

THIRD ANGLE PROJECTION

ALL DIMENSIONS IN mm



SECTION X-X



NOTES.

1. RECOMMENDED PCB SIZE = 1.4-2.0mm.
2. RECOMMENDED PIN SIZE = $\varnothing 0.40-0.56$ mm.
3. RECOMMENDED PCB HOLE SIZE = $\varnothing 0.8$ mm.

ORDER CODE:

D01-997XXXX

No. OF WAYS

1 TO 64

FINISH

01 = TIN/LEAD SHELL, GOLD CLIP

21 = TIN/LEAD SHELL, GOLD FLASH CLIP

SPECIFICATION.

MATERIAL:

CARRIER = GLASS FILLED POLYESTER UL94V-0
 SHELL = BRASS
 CONTACT = BERYLLIUM COPPER

FINISH:

01 = 5 μ 90/10 TIN/LEAD SHELL, GOLD CLIP
 21 = 5 μ 90/10 TIN/LEAD SHELL, GOLD FLASH CLIP

ELECTRICAL:

CURRENT RATING = 1A
 VOLTAGE RATING = 100V AC, 150V DC
 CONTACT RESISTANCE = 10 MILLIOHMS MAX.
 INSULATION RESISTANCE = 10000 MEGOHMS MIN.
 DIELECTRIC WITHSTANDING = 1000V AC MIN.

MECHANICAL:

INSERTION FORCE ($\varnothing 0.46$ mm GAUGE) = 1.8N
 WITHDRAWAL FORCE ($\varnothing 0.46$ mm GAUGE) = 1.0N
 DURABILITY = 500 CYCLES MIN.

ENVIRONMENTAL:

TEMPERATURE RANGE = -55 TO +125°C

6	29.06.98	4446
5	15.07.88	1315
ISS.	DATE	C/N
APPROVED: <i>[Signature]</i>		
CHECKED: <i>[Signature]</i>		
DRAWN: D. BECK		
CUSTOMER REF.		
ASSEMBLY DRG:		

HARWIN

HARWIN INC
U.S.A.

TEL: (812) 285 0055
FAX: (812) 285 0056

HARWIN PLC
UK

TEL: 01705 370451
FAX: 01705 314590

HARWIN PTE
SINGAPORE

TEL: 65 7794989
FAX: 65 7793868

TOLERANCES

X. = ± 1 mm
 X.X = ± 0.25 mm
 X.XX = ± 0.10 mm
 X.XXX = ± 0.01 mm
 ANGLES = $\pm 1^\circ$
 UNLESS STATED

MATERIAL:

SEE ABOVE

FINISH: SEE ABOVE

S/AREA: mm²

TITLE:

SIL THROUGH
SOCKET CONNECTOR

DRAWING NUMBER:

D01-997XX01/21

SHT
2
OF
2