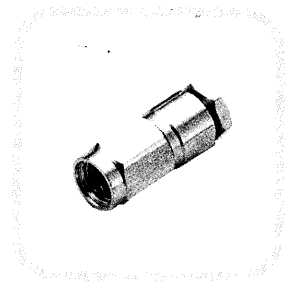
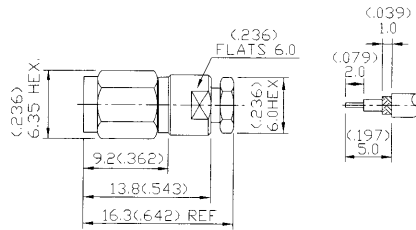


## Flexible Cable-Clamp Attachment

### Straight Plug Clamp

PART No.	APPLICABLE CABLE RG/U	NOTES
26-04L-TGG	174,188A,316	1
26-04M-TGG	178,196	1

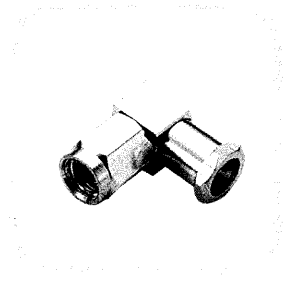
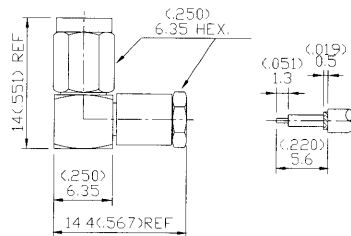
- Finish: gold plated center contact & body ( see Notes)
- Insulation: Teflon
- Refer to recommended assembly instruction on page 136



### Right Angle Plug Clamp

PART No.	APPLICABLE CABLE RG/U	NOTES
26-06L-TGG	174,188A,316	1
26-06M-TGG	178,196	1

- Finish: gold plated center contact & body ( see Notes)
- Insulation: Teflon
- Refer to recommended assembly instruction on page 136



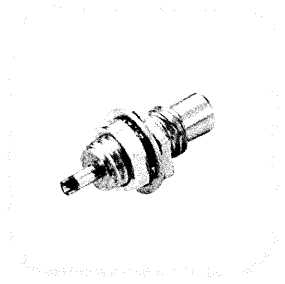
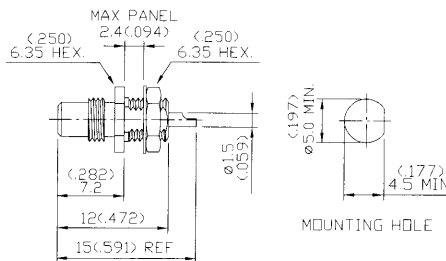
SMC

## Bulkhead, Panel Mount Receptacle (Solder Pot Contact)

### Straight Bulkhead Jack Receptacle (Front Mount)

**PART NO:26-07-TGG**

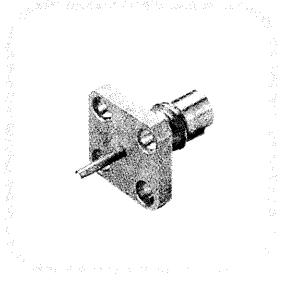
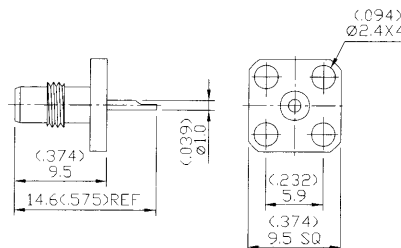
- Finish: gold plated center contact & body ( see Notes)
- Insulation: Teflon



### Square Flange Jack Receptacle

**PART NO:26-08-TGG**

- Finish: gold plated center contact & body ( see Notes)
- Insulation: Teflon

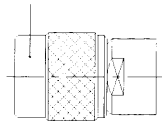


Notes: 1. Nickel plated body available, change the part no. suffix from TGG to TGN

# CABLE MOUNTING INSTRUCTIONS

## CM-07 for Clamp Type Connectors (1)

Connector Body



Braid Clamp



Washer



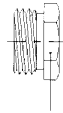
Center Contact



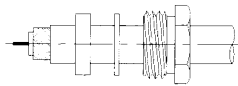
Gasket



Nut



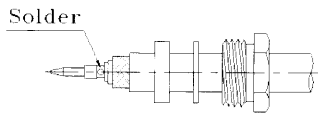
1.



### Preparation of Cable

- (1) Slide nut, washer and gasket onto cable.
- (2) Strip cable to recommended dimensions shown in catalogue.

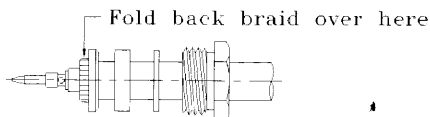
2.



### Solder Center Contact to Cable Center Conductor

- (1) Insert cable center conductor into center contact until it butts against cable dielectric.
- (2) Solder center contact.

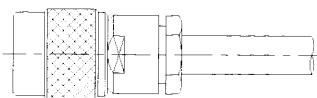
3.



### Install Braid Clamp

- (1) Place braid clamp over cable braid.
- (2) Comb braid wires out straight and fold back over front shoulder of braid clamp.
- (3) Trim braid wires flush with edge of braid clamp.

4.



### Final Assembly

- (1) Mount cable assembly and hardware into connector body.
- (2) Screw and tighten nut.

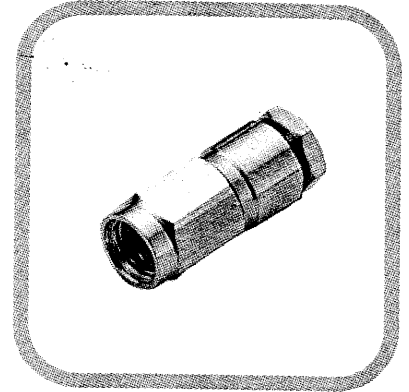
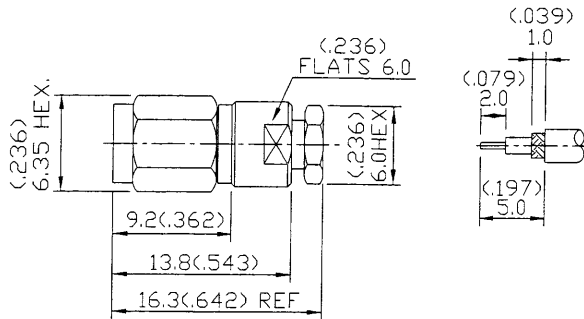
# ble-Clamp Attachment

ip

CABLE RG/U	NOTES
A,316	1
196	1

body ( see Notes)

struction on page 136

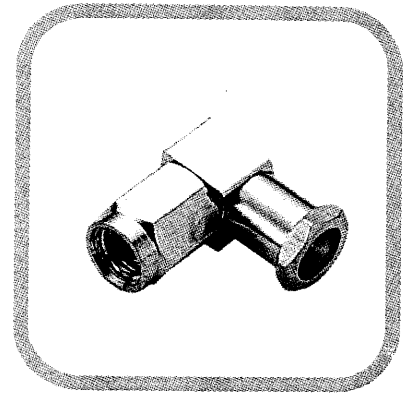
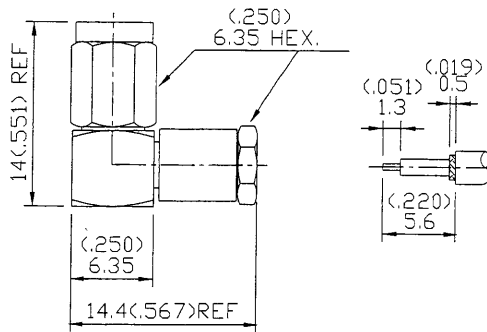


## Clamp

CABLE RG/U	NOTES
A,316	1
196	1

body ( see Notes)

struction on page 136



# nel Mount Receptacle (Solder Pot Contact)

## Receptacle (Front Mount)

body ( see Notes)

