



MICRO SWITCH

FREEPORT, ILLINOIS, U.S.A.
A DIVISION OF HONEYWELL

FED. MFG. CODE 91929

SWITCH - BASIC

CATALOG LISTING

BZ-2RQ18-A2

ALH1000

BZ-2RQ18-A2
 PAGE 1 OF 1
M
 DRAWING NUMBER
 7
 ISSUE

REPLACES

RELEASE NO.

CHECK

REVISIONS

A	CO17410	GCH	16 NOV 63
B	CO-73287-B	DHD	17 MAY 93
C	CO-77589	KDR	29 MAR 94
D	CO-82133		

23 AUG 05

RJ

CHECK

E

CO93346

DLT

10 SEP 98

F

0015139

TSG

23 AUG 05

CHECK

18 Nov '64

CHECK

16 NOV 64

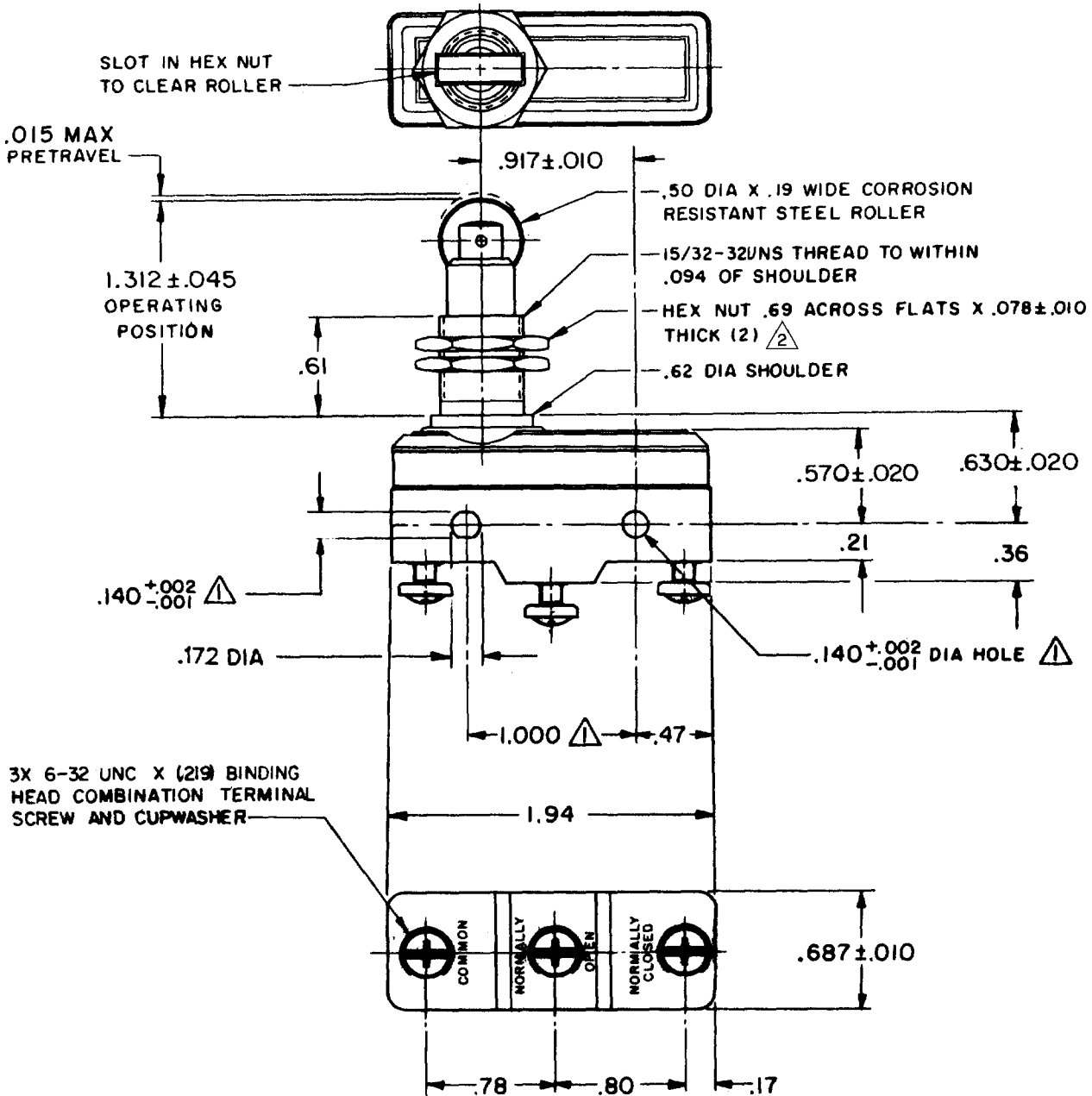
FORMTEK

FC-50376

DRAWN

GCH

16 NOV 64



NOTES

- \triangle MOUNTING HOLES WILL ACCEPT PINS OR SCREWS OF .139 MAX DIA ON 1.000 ± .002 CENTERS
- \triangle HARDWARE FURNISHED UNASSEMBLED

THIS DRAWING COVERS A PROPRIETARY ITEM AND IS THE PROPERTY OF MICRO SWITCH, A DIVISION OF HONEYWELL. THIS DRAWING IS NOT TO BE COPIED OR USED WITHOUT THE APPROVAL OF MICRO SWITCH.

CHARACTERISTICS

OPERATING FORCE ----- 9-13 OZ

RELEASE FORCE ----- 4 OZ MIN

DIFFERENTIAL TRAVEL --- .0004 - .0020

OVERTRAVEL ----- .140 MIN

ELECTRICAL DATA

CONTACT ARRANGEMENT
S P D T

-L96- 15 A-125, 250, OR 480 VAC
 1/2 A-125 VDC; 1/4 A-250 VDC
 1/8 HP-125 VAC; 1/4 HP-250 VAC

-L288-
 -L306-
 -L315-



EN 05
EC



16A 250V ~ T85 5E4

SCALE FULL

DO NOT SCALE PRINT

UNLESS OTHERWISE NOTED

DIMENSIONS ARE IN INCHES

TOLERANCES ARE:

ONE PLACE (.0) ± .030
 TWO PLACE (.00) ± .015
 THREE PLACE (.000) ± .005
 ANGLES ±

WEIGHT