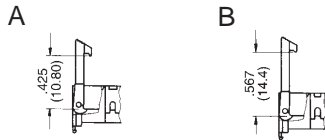


**Series 057
Low Profile IDC
Headers**

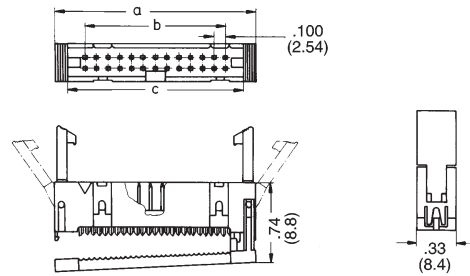
10 to 64 Contact



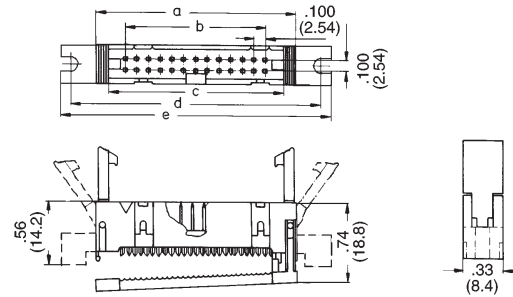
Short locking latch (A) for **LAT-CON™** sockets with and without strain relief.

Long locking latch (B) for **LAT-CON™** socket with strain relief.

No Flange



Slotted Flange



No. of contacts - Dimensions

	10	14	16	20	26	34	40	50	60	64
a	.91" (23.1)	1.11" (28.2)	1.21" (30.7)	1.41" (35.8)	1.71" (43.4)	2.11" (53.6)	2.41" (61.2)	2.91" (73.9)	3.41" (86.6)	3.61" (91.7)
b	.400" (10.16)	.600" (15.24)	.700" (17.78)	.900" (22.86)	1.200" (30.48)	1.600" (40.64)	1.900" (48.26)	2.400" (60.96)	2.900" (73.66)	3.100" (78.74)
c	.71" (18.0)	.91" (23.1)	1.01" (25.6)	1.21" (30.7)	1.51" (38.3)	1.91" (48.3)	2.21" (56.1)	2.71" (68.8)	3.21" (81.5)	3.41" (86.6)
d	1.20" (30.5)	1.40" (35.6)	1.50" (38.1)	1.70" (43.2)	2.00" (50.8)	2.40" (61.0)	2.70" (68.6)	3.20" (81.3)	3.70" (94.0)	3.90" (99.1)
e	1.50" (38.1)	1.70" (43.2)	1.80" (45.7)	2.00" (50.8)	2.30" (58.3)	2.70" (68.6)	3.00" (76.2)	3.50" (88.9)	4.00" (101.6)	4.20" (106.7)

Part numbers

No. of contacts 10, 14, 16, 20, 26, 34, 40, 50, 60, 64

□□ = Number of Circuits

Termination Methods	Plating Options	Style						Strain Relief Bracket
Insulation Displacement Connection	30μ" Au/Ni	057-0 □□ - 135	057-0 □□ - 135A	057-0 □□ - 135B	057-0 □□ - 135S	057-0 □□ - 135SA	057-0 □□ - 135SB	057-000-0□□
	15μ" Au/Ni	057-0 □□ - 155	057-0 □□ - 155A	057-0 □□ - 155B	057-0 □□ - 155S	057-0 □□ - 155SA	057-0 □□ - 155SB	

*Contact Factory For Circuit Size and Availability

All products packaged 25 pieces per package