

AMPMODU Locking Clip Receptacle Housings & Contacts

- Single and double row
- Self retaining contact system
- Rapid installation to 0.63mm square posts
- Gold or tin plated crimp snap-in contacts

Specification:

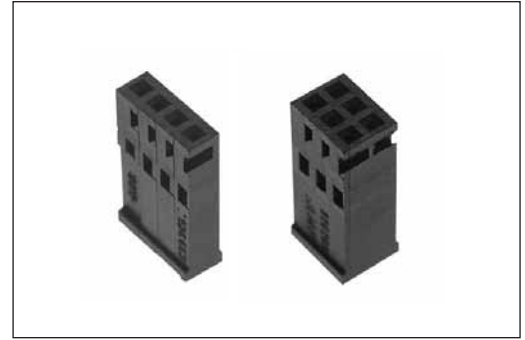
Housing - Thermoplastic Polyester
GV, black UL 94V-0

Contacts - Phosphor bronze

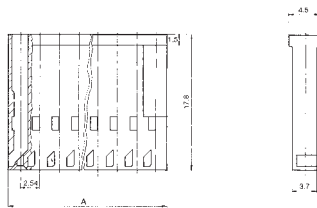
Current Rating - 3A

Mating Connectors:

MOD II Pin Headers - Pages 17 & 18

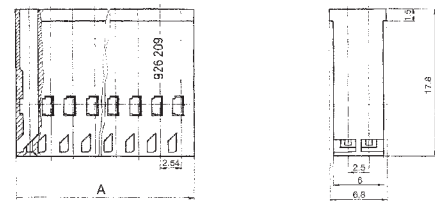


Single Row



No. of Positions	Dimension A	Part Number
1	2.9	926010-1
2	5.5	926657-2
3	8.1	926657-3
4	10.6	926657-4
5	13.2	926657-5
6	15.7	926657-6
Keying Plug		926329-1

Double Row



No. of Positions	Dimension A	Part Number
2 x 2	5.5	926209-2
2 x 3	8.1	926209-3
2 x 4	10.6	926209-4
2 x 5	13.2	926209-5
2 x 6	15.7	926209-6
Keying Plug		926329-1

Crimp Snap-in Contacts

Wire Size Range mm ²	AWG	Insulation Diameter mm	Packaging	Part Number	
				0.8µm Gold	Tin
0.12 - 0.40	26 - 22	1.0 - 1.6	Tape and Reel	87124-1	5-87124-2
			Loose Piece	87165-1	5-87165-2
0.5 - 0.6	20	1.0 - 1.6	Tape and Reel	867052-2	5-867052-1