

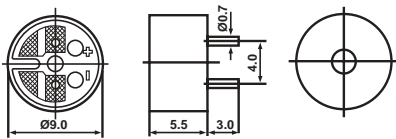
Electro-Acoustic Transducers

Part Number	Rated Voltage (VDC)	Operating Voltage (VDC)	Max. Current (mA)*	Sound Output*	Coil Resistance (Ohms)	Coil Impedance (Ohms)**	Terminal Type	Frequency	Operating Temperature
BRT0905P-03	3	2 - 6	80	82dB @ 10cm	25 ± 4	45	2 Pins	2731Hz	-25° to +70°C
BRT0905P-01-SEHA	1.5	1 - 2	80	90dB @ 10cm	5.5 ± 1	9.5 ± 3	2 Pins	3200Hz	-20° to +60°C
BRT0905P-01-SEHB	1.5	1 - 2	80	85dB @ 10cm	5.5 ± 1	9.5 ± 3	2 Pins	2700Hz	-20° to +60°C
BRT0907P-01	1.5	1 - 2	80	80dB @ 10cm	5.5 ± 1	9.5 ± 3	2 Pins	3100Hz	-20° to +60°C
BRT0907P-01-SEHA	1.5	0.8 - 1.5	80	85dB @ 10cm	5.5 ± 1	9.5 ± 3	2 Pins	3100Hz	-20° to +60°C
BRT0907P-01-SEHB	1.5	1 - 2	80	85dB @ 10cm	5.5 ± 1	9.5 ± 3	2 Pins	2731Hz	-20° to +60°C
BRT1004P-01	1.5	1 - 2	80	85dB @ 10cm	5.5 ± 2	9.5 ± 3	2 Pins	2730Hz	-20° to +60°C
BRT1004P-03	3	2 - 4	60	85dB @ 10cm	25 ± 3	45	2 Pins	2730Hz	-20° to +60°C
BRT1004P-05	5	4 - 6	60	85dB @ 10cm	45 ± 4	80	2 Pins	2730Hz	-20° to +60°C
BRT1206P-01	1.5	1 - 2	10	70dB @ 10cm	50 ± 7.5	140	2 Pins	2048Hz	-20° to +60°C
BRT1207P-01-C	1.5	1.4 - 2	25	75dB @ 10cm	N/A	N/A	2 Pins	2300 ± 500Hz	-20° to +70°C
BRT1207P-03-C	3	2 - 5	30	82dB @ 10cm	W/Built-in	W/Built-in	2 Pins	2300 ± 400Hz	-20° to +70°C
BRT1207P-06-C	5	3 - 7	30	83dB @ 10cm	Drive Circuit	Drive Circuit	2 Pins	2300 ± 400Hz	-20° to +70°C
BRT1207P-12-C	12	9 - 15	30	83dB @ 10cm			2 Pins	2300 ± 400Hz	-20° to +70°C
BRT1207P-01-SEHA	1.5	1 - 2	70	80dB @ 10cm	6.5 ± 1	16	2 Pins	2048Hz	-20° to +60°C
BRT1207P-01-SEHB	1.5	1 - 2	70	75dB @ 10cm	6.5 ± 1	22	2 Pins	2731Hz	-20° to +60°C
BRT1207P-01-SEHC	1.5	1 - 2	10	70dB @ 10cm	50 ± 7.5	140	2 Pins	2048Hz	-20° to +60°C
BRT1209L-01	1.5	1 - 2	30	80dB @ 10cm	16 ± 4	40	2 Leadwires	2048Hz	-20° to +60°C
BRT1209P-01	1.5	1 - 2	30	80dB @ 10cm	16 ± 4	40	2 Pins	2048Hz	-20° to +60°C
BRT1209L-01-50	1.5	1 - 2	10	80dB @ 10cm	50 ± 7.5	140	2 Leadwires	2048Hz	-20° to +60°C
BRT1209P-01-50	1.5	1 - 2	10	80dB @ 10cm	50 ± 7.5	140	2 Pins	2048Hz	-20° to +60°C
BRT1209L-03	3.6	1.5 - 5	70	90dB @ 10cm	16 ± 4	40	2 Leadwires	2048Hz	-20° to +60°C
BRT1209P-03	3.6	1.5 - 5	70	90dB @ 10cm	16 ± 4	40	2 Pins	2048Hz	-20° to +60°C
BRT1209L-03-50	3.6	1.5 - 5	40	86dB @ 10cm	50 ± 7.5	140	2 Leadwires	2048Hz	-20° to +60°C
BRT1209P-03-50	3.6	1.5 - 5	40	86dB @ 10cm	50 ± 7.5	140	2 Pins	2048Hz	-20° to +60°C
BRT1209L-05-50	5	1.5 - 5	50	90dB @ 10cm	50 ± 7.5	140	2 Leadwires	2048Hz	-20° to +60°C
BRT1209P-05-50	5	1.5 - 5	50	90dB @ 10cm	50 ± 7.5	140	2 Pins	2048Hz	-20° to +60°C

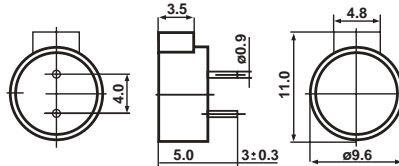
*Value Applying Rated Voltage (Resonant Frequency, 1/2 Duty Square Wave)

**Value Applying (Resonant Frequency, Sine Wave, Measuring Current 60uA)

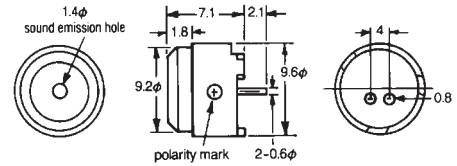
BRT0905P-03 Series



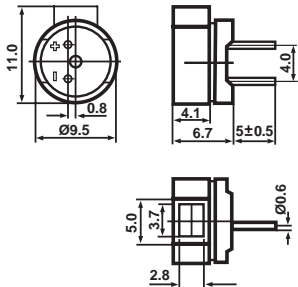
BRT0905P-01-SEH Series



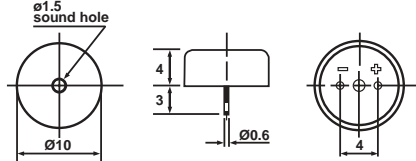
BRT0907P-01 Series



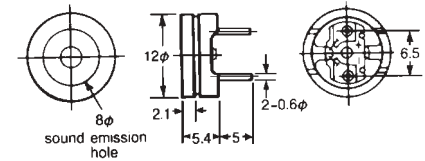
BRT0907P-01-SEH Series



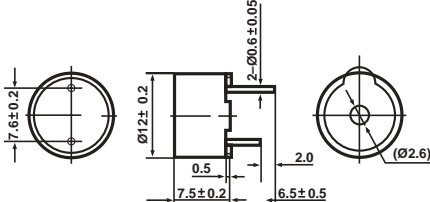
BRT1004P Series



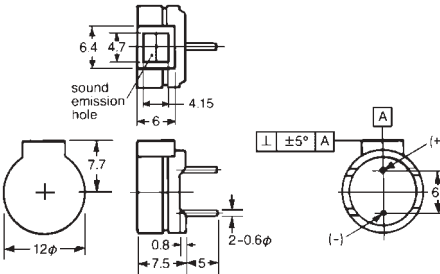
BRT1206P-01 Series



BRT1207P-C Series



BRT1207P-SEH Series



BRT1209 Series

