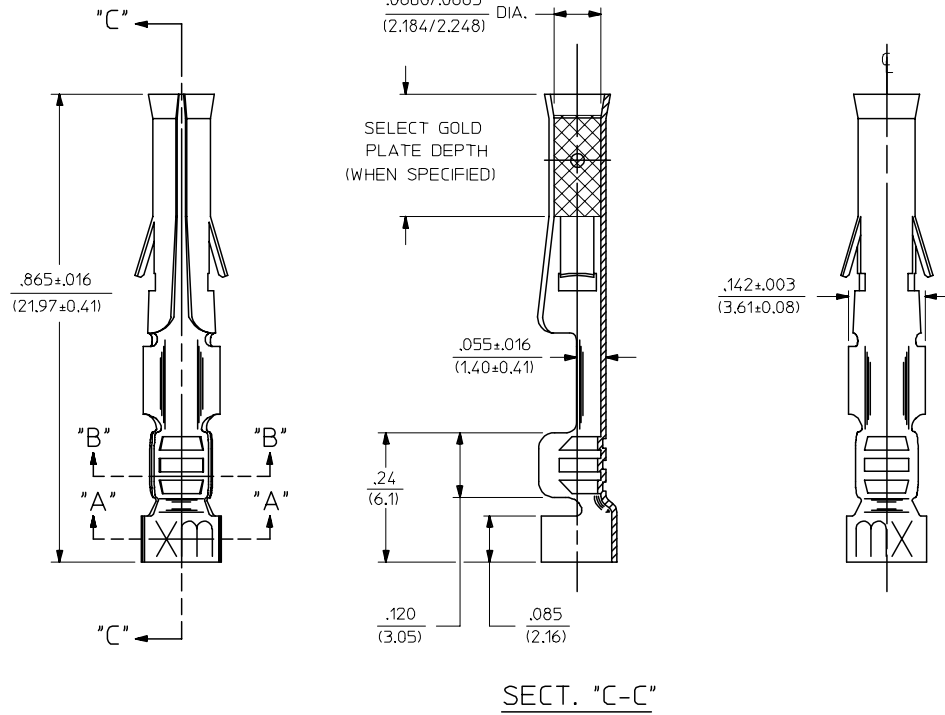
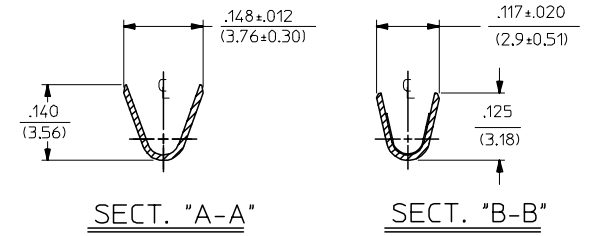
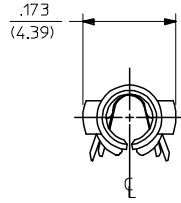


PART NO.	ENG. NO.
02-09-1116	1381-(P901)
02-09-1118	1381-(P901)L

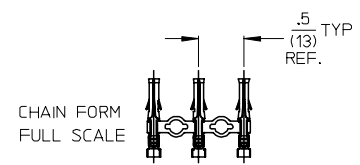


**LEGEND**

1381-(\*)\* \* \* \* \*

- P=PREPLATE
- BLANK=POSTPLATE
- FINISH CODE
- FORM
- BLANK=STD. CHAIN
- L=LOOSE

SECT. "C-C"



- NOTES:
1. MATERIAL: BRASS
  2. FINISHES:  
901 HOT TIN DIP .000020/(0.00051) MIN.
  3. THIS PART CONFORMS TO PROD. SPEC. PS-43660-9999.
  4. PACKAGING SPECIFICATION: N/A
  5. TERMINAL FOR USE WITH .093/(2.36) SERIES HOUSINGS AND WILL ACCEPT 18 THRU 22 AWG WIRE.
  6. INSERTION FORCE: 3.5 LBS. AVG. WHEN TERMINAL IS INSERTED INTO AN .093 SERIES HOUSING.
  7. RETENTION: 20 LBS. MIN. FROM HOUSING.

DIMPLE P/N'S ONLY FC NO: UCP2006-2900 DRAWN: PPI/DER 2006/06/29 CHKD: AEL/HAG 2006/07/05 APPR: FSM/TH 2006/07/05 REV:	QUALITY SYMBOLS ▽=0 ▽=0	GENERAL TOLERANCES (UNLESS SPECIFIED)		DIMENSION STYLE IN/MM		SCALE 6:1	DESIGN UNITS INCH	THIRD ANGLE PROJECTION	
		mm	INCH	DRAWN BY GWC	DATE 1995/02/10	TITLE <b>CRIMP TERMINAL, DIMPLED FEMALE, .093/(2.36) DIA. 18-22 AWG</b> <b>MOLEX INCORPORATED</b> MATERIAL NO. DOCUMENT NO. SD-1381-*** SHEET NO. 1 OF 1			
		4 PLACES ± --- ± ---		CHECKED BY RW	DATE 1995/02/10				
3 PLACES ± --- ± .010		APPROVED BY RAS	DATE 1995/02/10						
DRAFT WHERE APPLICABLE MUST REMAIN WITHIN DIMENSIONS		SIZE C	SEE CHART			THIS DRAWING CONTAINS INFORMATION THAT IS PROPRIETARY TO MOLEX INCORPORATED AND SHOULD NOT BE USED WITHOUT WRITTEN PERMISSION			