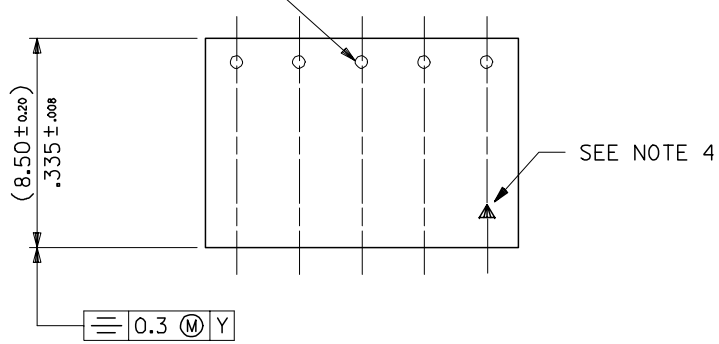


10 9 8 7 6 5 4 3 2 1

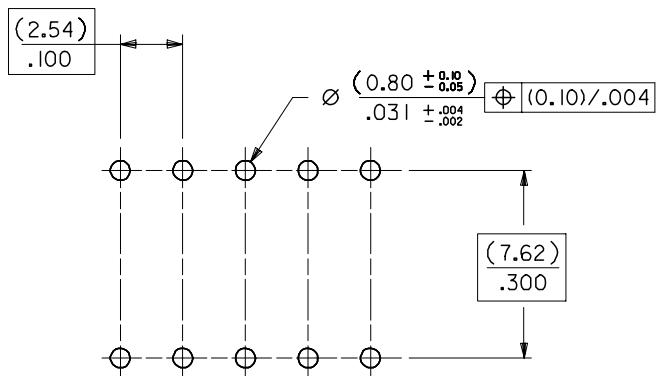
F  
E  
D  
C  
B  
A

F  
E  
D  
C  
B  
A

TERMINAL RETENTION FEATURE



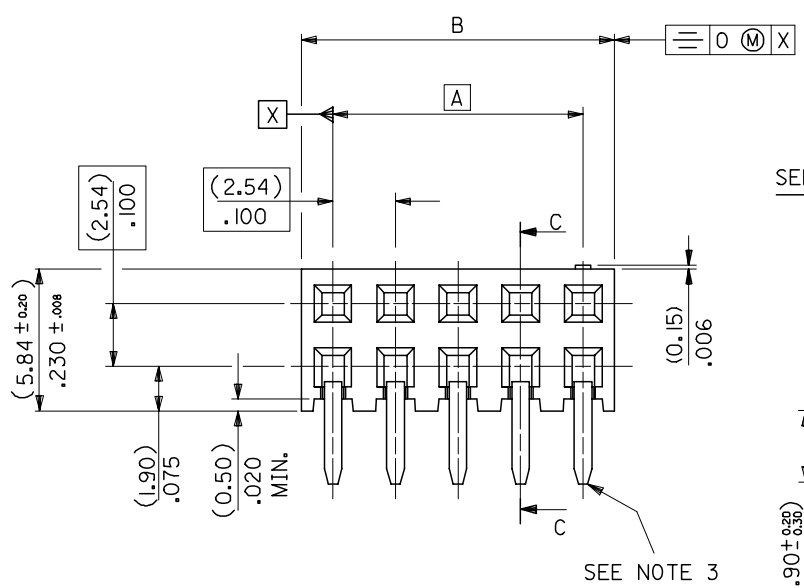
SEE NOTE 4



RECOMMENDED P.C. BOARD HOLE PATTERN

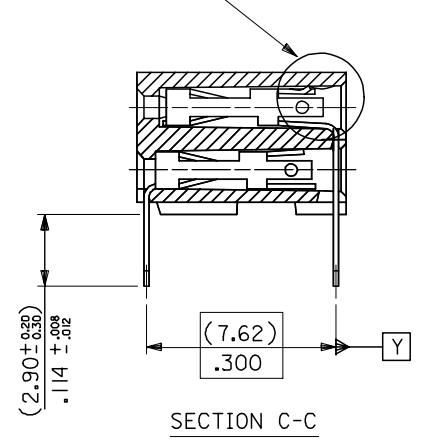
NOTES

- 1) CONTACT-PLATED PHOSPHOR BRONZE.
- 2) HOUSING-15% GLASS FILLED POLYESTER. COLOUR-BLACK.
- 3) COMPATABLE WITH PCB HOLE PATTERN.
- 4) THIS MARK INDICATES CIRCUIT NO.1
- 5) FOR (0.635)/.025 SQ. MALE PINS THE LENGTH MUST BE (5.65)/.222 MIN & (7.00)/.276 MAX. TO ENSURE GOOD CONNECTION WITH CONTACT.
- 6) PRODUCT SPECIFICATION: PS-99020-0001
- 7) RECOMMENDED PCB THICKNESS 1.6MM



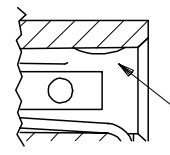
SEE NOTE 3

SEE DETAIL "A"



SECTION C-C

DETAIL "A"



TERMINAL RETENTION FEATURE

|  |                               |   |   |                            |                                     |                        |                        |           |
|--|-------------------------------|---|---|----------------------------|-------------------------------------|------------------------|------------------------|-----------|
| ADDED PCB DIM<br>EC NO: E2008-0119<br>DRWN:DBYRNES<br>CHKD:<br>APPR:EDMAHONY<br>2007/09/10<br>2007/09/10<br>2007/09/10 | QUALITY SYMBOLS<br>▽=0<br>▽=0 | GENERAL TOLERANCES (UNLESS SPECIFIED)   |   | DIMENSION STYLE<br>MM ONLY | SCALE<br>---                        | DESIGN UNITS<br>METRIC | THIRD ANGLE PROJECTION |           |
|  |                               | 4 PLACES ± --- ± ---<br>3 PLACES ± --- ± ---<br>2 PLACES ± --- ± ---<br>1 PLACE ± --- ± --- | mm    INCH  | DRAWN BY    DATE           | TITLE<br>C-GRID PCB CONN<br>DR HORZ |                        |                        |           |
|  |                               | ANGULAR ± ---°  | DRAFT WHERE APPLICABLE<br>MUST REMAIN WITHIN DIMENSIONS | CHECKED BY    DATE         | MOLEX INCORPORATED                  |                        |                        |           |
|  | AE                            | REV   | DESCRIPTION   | APPROVED BY    DATE        | MATERIAL NO.                        | DOCUMENT NO.           | SDA-90152              | SHEET NO. |

SEE CHART  
 THIS DRAWING CONTAINS INFORMATION THAT IS PROPRIETARY TO MOLEX INCORPORATED AND SHOULD NOT BE USED WITHOUT WRITTEN PERMISSION

9 8 7 6 5 4 3 2 1

| PART NO.   | NO. OF CKTS. | DIM. A     | DIM. B (+0.08 / -0.12) | NO. PER TUBE |
|------------|--------------|------------|------------------------|--------------|
| 90152-XX04 | 4            | ( 2.54 )   | ( 5.08 )               | .200         |
| ▲ 06       | 6            | ( 5.08 )   | ( 7.62 )               | .300         |
| 08         | 8            | ( 7.62 )   | ( 10.16 )              | .400         |
| 10         | 10           | ( 10.16 )  | ( 12.70 )              | .500         |
| 12         | 12           | ( 12.70 )  | ( 15.24 )              | .600         |
| 14         | 14           | ( 15.24 )  | ( 17.78 )              | .700         |
| 16         | 16           | ( 17.78 )  | ( 20.32 )              | .800         |
| 18         | 18           | ( 20.32 )  | ( 22.86 )              | .900         |
| 20         | 20           | ( 22.86 )  | ( 25.40 )              | 1.000        |
| 22         | 22           | ( 27.94 )  | ( 30.48 )              | 1.200        |
| 24         | 24           | ( 30.48 )  | ( 33.02 )              | 1.300        |
| 26         | 26           | ( 33.02 )  | ( 35.56 )              | 1.400        |
| 28         | 28           | ( 35.56 )  | ( 38.10 )              | 1.500        |
| 30         | 30           | ( 38.10 )  | ( 40.64 )              | 1.600        |
| 32         | 32           | ( 40.64 )  | ( 43.18 )              | 1.700        |
| 34         | 34           | ( 43.18 )  | ( 45.72 )              | 1.800        |
| 36         | 36           | ( 45.72 )  | ( 48.26 )              | 1.900        |
| 38         | 38           | ( 48.26 )  | ( 50.80 )              | 2.000        |
| 40         | 40           | ( 53.34 )  | ( 55.88 )              | 2.200        |
| 42         | 42           | ( 55.88 )  | ( 60.96 )              | 2.400        |
| 44         | 44           | ( 60.96 )  | ( 66.04 )              | 2.600        |
| 46         | 46           | ( 66.04 )  | ( 71.12 )              | 2.800        |
| 48         | 48           | ( 71.12 )  | ( 76.20 )              | 3.000        |
| 50         | 50           | ( 76.20 )  | ( 81.28 )              | 3.200        |
| 52         | 52           | ( 81.28 )  | ( 86.36 )              | 3.400        |
| 54         | 54           | ( 86.36 )  | ( 91.44 )              | 3.600        |
| 56         | 56           | ( 91.44 )  | ( 96.52 )              | 3.800        |
| 58         | 58           | ( 96.52 )  | ( 101.60 )             | 4.000        |
| 60         | 60           | ( 101.60 ) | ( 106.68 )             | 4.200        |
| 62         | 62           | ( 106.68 ) | ( 111.76 )             | 4.400        |
| 90152-XX64 | 64           | ( 111.76 ) | ( 116.84 )             | 4.600        |

PLATING VERSION A  
 PRE-PLATED HOT DIP TIN  
 1.0 TO 2.5 microns (.00004" TO .00010").

PLATING VERSION E

1.27 TO 1.78 microns (.00005" TO .00007") NICKEL  
 OVERALL, 0.38 TO 0.64 microns (.000015" TO .000025")  
 GOLD ON CONTACT AREA (OVER NICKEL).  
 3 TO 5 microns (.00012" TO .00020") TIN  
 ON SOLDER TAILS (OVER NICKEL).

PLATING VERSION F.

1.27 TO 1.78 microns (.00005" TO .00007") NICKEL  
 OVERALL, 0.76 TO 1.0 microns (.00003" TO .00004")  
 GOLD ON CONTACT AREA (OVER NICKEL).  
 3 TO 5 microns (.00012" TO .00020") TIN  
 ON SOLDER TAILS (OVER NICKEL).

PLATING VERSION G.

1.27 TO 1.78 microns (.00005" TO .00007") NICKEL  
 OVERALL, 0.125 TO 0.20 microns (.000005" TO .0000079")  
 GOLD ON CONTACT AREA (OVER NICKEL).  
 3 TO 5 microns (.00012" TO .00020") TIN  
 ON SOLDER TAILS (OVER NICKEL).

90152-XXXX  
 INDICATES NO. OF CIRCUITS.

PLATING CODE.  
 21 = VERSION A.  
 22 = VERSION E.  
 23 = VERSION F.  
 25 = VERSION G.

|   |                   |                           |   |
|---|-------------------|---------------------------|---|
| LEAD FREE CONVERSION<br>NEW ORDER ADDED   | EC NO. E2004-0610 | DRWN: PSHEAHAN 08/01/2004 | CH'K:<br>APPR:  |
| AD  | REV               | DESCRIPTION               | QUALITY SYMBOLS   |
|   |                   |                           | MAJOR =<br>CRITICAL =                                     |
| GENERAL TOLERANCES:<br>(UNLESS SPECIFIED) |                   | SCALE                     | DESIGN UNITS  |
| MM  | INCH              | 5 # /                     | MM INCH   |
| 4 PLACES ±0.                              | ±.                | DRAWN BY & DATE           | THIRD ANGLE PROJECTION                                    |
| 3 PLACES ±0.                              | ±.                | DB 14/ 7/87               |   |
| 2 PLACES ±0.                              | ±.                | CHECKED BY & DATE         | TITLE:  |
| 1 PLACE ±0.                               | ±.                | APPROVED BY & DATE        | C-GRID III<br>DUAL ROW HORIZONTAL<br>P.C. BOARD CONNECTOR |
| ANGULAR: ± °                              |                   | CAD FILENAME 590152x      | MOLEX INCORPORATED  |
|   |                   | MATERIAL NO. SDA-90152    |   |
|   |                   | DRAWING NO.               | SHEET NO.   |
|   |                   | SEE CHART                 | 20F   |
|   |                   |                           | SIZE  |
|   |                   |                           | B   |

STANDARD PRODUCTS

FOR PREVIOUS DRAWING ISSUES SEE MRI.