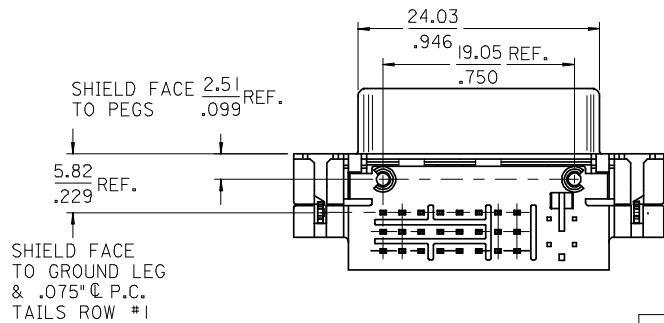
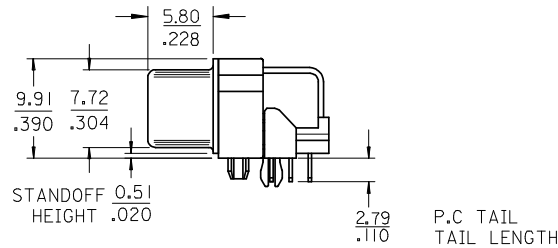
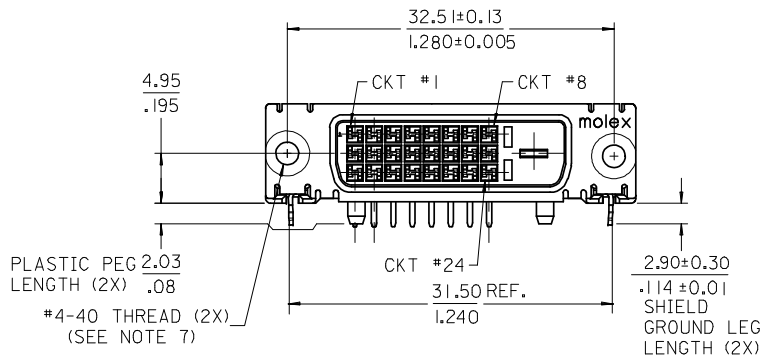


NOTES:

- MATERIALS:  
 SHIELD -- DEEP DRAW STEEL.  
 HOUSING -- GLASS FILLED POLYMER, NATURAL (WHITE), UL 94v-0.  
 TAIL ALIGNER -- GLASS FILLED POLYMER, NATURAL (WHITE), UL 94v-0.  
 CONTACTS -- COPPER ALLOY.  
 MICROCROSS GROUND -- COPPER ALLOY.  
 JACKPOSTS -- STEEL
- PLATING: SEE SHEET 2
- PRODUCT CONFORMS TO MOLEX PRODUCT SPECIFICATION NUMBER PS-74320-001. REFER TO THIS SPECIFICATION FOR SPACING ON A P.C.B. OF TWO OR MORE CONNECTORS WHEN USING A CABLE OR AN ADAPTER ASSEMBLY.
- SEE SHEET 2 FOR RECOMMENDED PANEL CUT-OUT AND P.C.B. LAYOUT.
- PARTS WILL BE PACKAGED IN TRAYS PER PK-74320-009
- PRODUCT CONFORMS TO DDWG DVI SPECIFICATION. REFER TO THIS SPECIFICATION FOR CONNECTOR MATING DIMENSIONS.
- RECOMMENDED MOUNTING HARDWARE IS MOLEX P/N : 88780-6066 OR 82007-0300. OR 71781-0001. REFER TO PRODUCT SPECIFICATION NUMBER PS-74320-001 FOR THE APPLICATION TORQUE REQUIREMENT FOR ASSEMBLING MOUNTING HARDWARE.

△ CAVITY NO. AND MANUFACTURING PLANT CODE.



PART NUMBER	CONNECTOR	JACKPOST
74320-4006	74320-4026	47570-0002

REVISE	EC NO: SH2008-0320	2008/01/10
	DRWN: XJSONG	2008/01/23
	CHKD: JTIAN	2008/03/04
	APPR: HWANG	

QUALITY SYMBOLS	DESCRIPTION
▽=0	
⊕=0	

GENERAL TOLERANCES (UNLESS SPECIFIED)	
mm	INCH
4 PLACES ± ---	± ---
3 PLACES ± ---	± .010
2 PLACES ± 0.25	± .010
1 PLACE ± 0.25	± .010
ANGULAR ± 3 °	
DRAFT WHERE APPLICABLE MUST REMAIN WITHIN DIMENSIONS	

DIMENSION STYLE	
MM/IN	
DRAWN BY	DATE
XJSONG	2007/04/02
CHECKED BY	DATE
JTIAN	2007/04/02
APPROVED BY	DATE
JNCHEN	2007/04/02
MATERIAL NO.	
74320-4006	

SCALE	DESIGN UNITS	THIRD ANGLE PROJECTION
2:1	INCH	
TITLE		
DVI-DITITAL RIGHT ANGLE RECEPTACLE CONNECTOR WITH JACKPOSTS		
MOLEX INCORPORATED		
DOCUMENT NO.	SHEET NO.	
SD-74320-103	1 OF 2	
THIS DRAWING CONTAINS INFORMATION THAT IS PROPRIETARY TO MOLEX INCORPORATED AND SHOULD NOT BE USED WITHOUT WRITTEN PERMISSION		

F

E

D

C

B

A

F

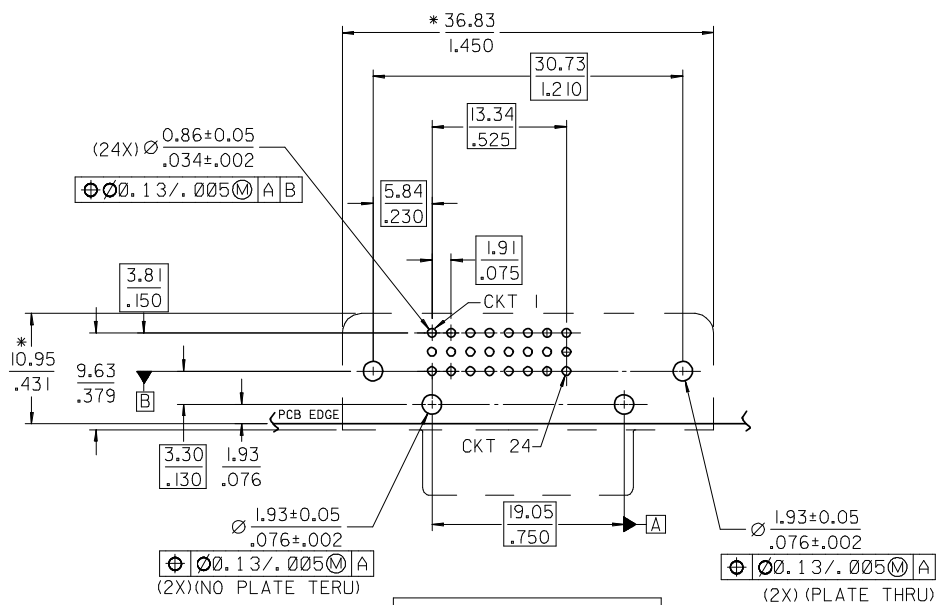
E

D

C

B

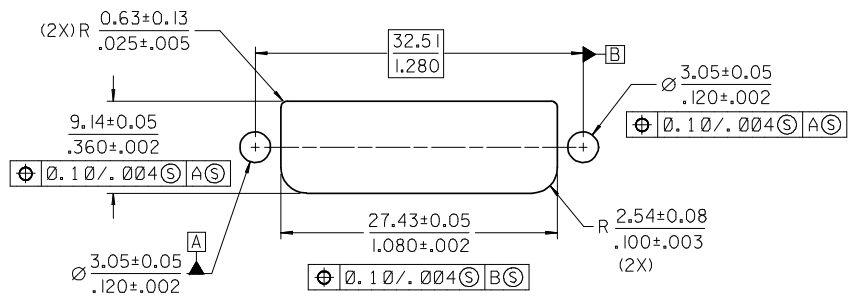
A



RECOMMENDED PCB LAYOUT

\* THESE DIMENSIONS REPRESENT CONNECTOR OVERLAY ON PCB

PLATING OPTION :  
 OUTER SHIELD -- 150u"/3.75um MIN. BRIGHT TIN OVER  
 50u"/(1.27um) MIN. NICKEL OVER COPPER FLASH.  
 .075"/1.91mm CONTACTS -- SELECT GOLD FLASH AND  
 100u"/2.50um MIN. SELECT PURE TIN  
 OVER 50u"/1.27um MIN. NICKEL OVERALL.



RECOMMEND PANEL CUT-OUT  
 PANEL THICKNESS: 0.76/.030 - 1.02/.040

SEE SHEET 1	EC NO: SHZ008-0320	2008/01/10
	DRWN: XJSONG	2008/01/23
	CHKD: JTIAN	2008/03/04
	APPR: HWANG	2008/03/04
REV	DESCRIPTION	

QUALITY SYMBOLS	▽=0
	∇=0
GENERAL TOLERANCES (UNLESS SPECIFIED)	mm
	INCH
DRAFT WHERE APPLICABLE MUST REMAIN WITHIN DIMENSIONS	4 PLACES ± --- ± ---
	3 PLACES ± --- ± .010
	2 PLACES ± 0.25 ± .010
	1 PLACE ± 0.25 ± .010
	ANGULAR ± 3 °

DIMENSION STYLE		SCALE	DESIGN UNITS
MM/IN		1:1	INCH
DRAWN BY	DATE	TITLE	
XJSONG	2007/04/02	DVI-DITITAL RIGHT ANGLE RECEPTACLE CONNECTOR WITH JACKPOSTS	
CHECKED BY	DATE	MOLEX INCORPORATED	
JTIAN	2007/04/02	DOCUMENT NO. SD-74320-103	
APPROVED BY	DATE	SHEET NO. 2 OF 2	
JNCHEN	2007/04/02		
MATERIAL NO.	67351-4006		

THIRD ANGLE PROJECTION
THIS DRAWING CONTAINS INFORMATION THAT IS PROPRIETARY TO MOLEX INCORPORATED AND SHOULD NOT BE USED WITHOUT WRITTEN PERMISSION