

nominal voltage: 1,2V
max. charge voltage: 1,5V

capacity:
 nominal : 800mAh
 minimum: 730mAh

recommended discharge current: ≤800mA

charge:
 standard charge: charge current 80mA, charge time 16hrs at 20°C
 fast charge: charge current 800mA, charge time 1,1hrs

recommended charge termination control parameters:
 -dV: 5...10mV
 dT/dt: 0,8...1°C per min
 TCO: 45...50°C

trickle charge current: 8...40mA (recommended)

continuous overcharge: <80mA (less than 1 year) no conspicuous deformation, no leakage

internal resistance: ≤40mOhms at 1000Hz, battery fully charged

life expectancy: 500 cycles IEC standard

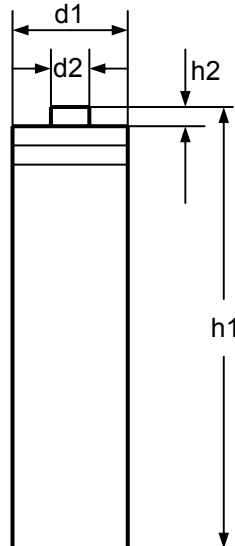
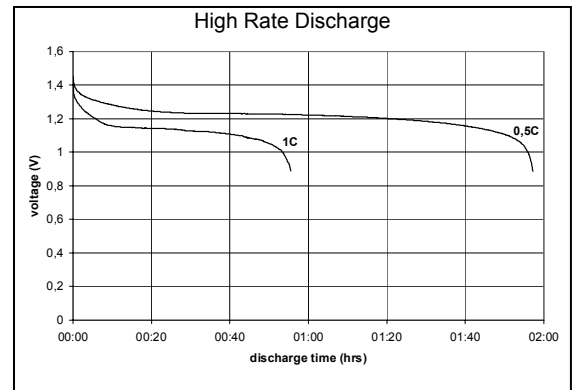
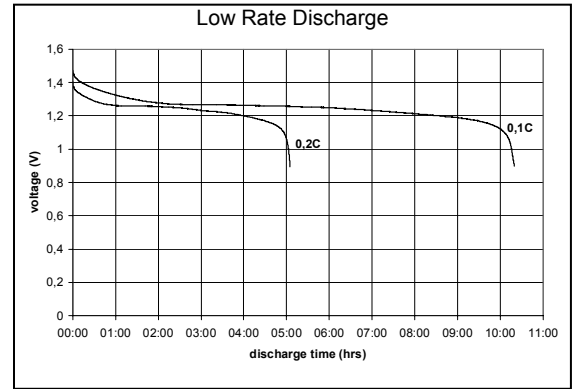
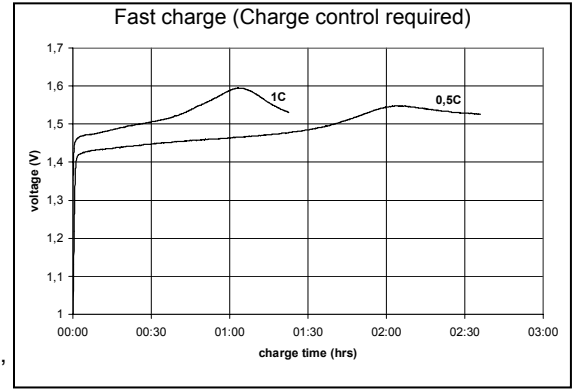
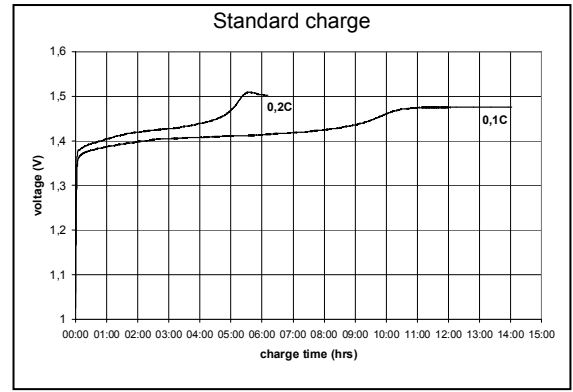
ambient temperature range: 0...40°C standard charge
 -20...65°C discharge
 -20...50°C storage less than 30 days
 -20...40°C storage less than 3 months
 -20...35°C storage less than 1 year

conditions

at standard charge (0,1C / 20°C)

discharge at 0,2C
 discharge at 0,2C
 1,0V end discharge voltage
 ambient temperature 20°C

ambient temperature 20...50°C



mechanical specifications

cell dimensions (with sleeve)
 diameter d1: 10,5-0,7mm
 diameter d2: 3,8+/-0,2mm
 height h1: 44,5-1,0mm
 height h2: 1,5+0,5mm
 weight: approx. 12g

	specifications for model/type:	AAA – NiMH 800mAh
	Ansmann drawing number / part number:	5030011
	drawn by / date:	Gramlich / 22.05.2006