

# PC PHONO JACKS

Designers' Choice

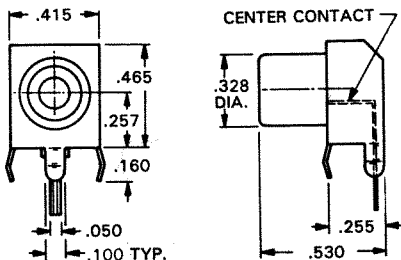
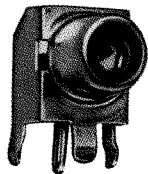


NOTE: All jacks on this page mate with 1/8" diameter pins.

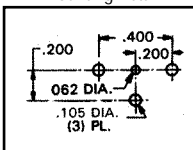
## SNAP-FIT 90° PC PHONO JACK

CHOICE OF TIN OR GOLD PLATE

Complete on piece jack for insertion into PC board. Time Saving. No Wiring Required. Snap-fits into PC board.



Mounting Detail



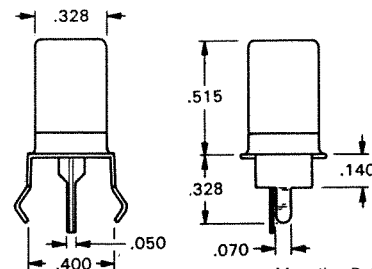
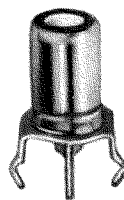
### MATERIAL

Shell: Steel  
Contact: Brass  
Plating: Tin or Gold

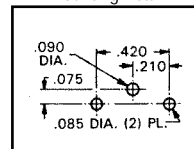
CAT. NO. 901 (TIN PLATE)  
CAT. NO. 900 (GOLD PLATE)

## SNAP-FIT VERTICAL PC PHONO JACK

Extra long, one piece shell to accept plugs with longer pins for greater contact. Snaps into holes on PC Board and firmly held for soldering. No staking required.



Mounting Detail



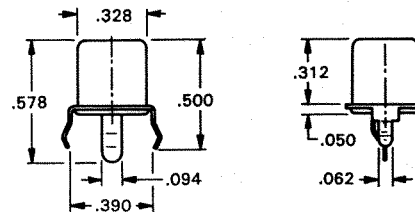
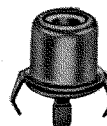
### MATERIAL

Shell: Steel  
Contact: Brass  
Plating: Tin

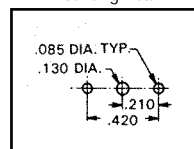
CAT. NO. 577

## SNAP-FIT VERTICAL PC JACK

Snaps into holes on PC Board and firmly held for soldering. No staking required.



Mounting Detail

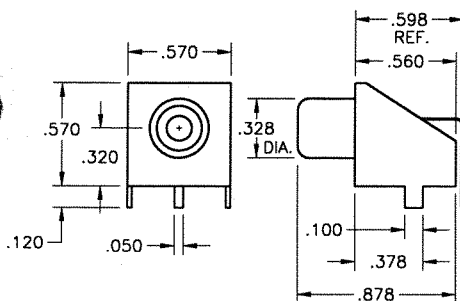
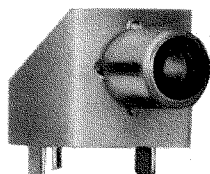


### MATERIAL

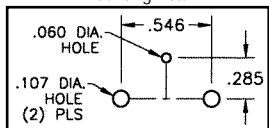
Shell: Steel  
Contact: Brass  
Plating: Tin

CAT. NO. 572

## 90° PC PHONO JACK



Mounting Detail



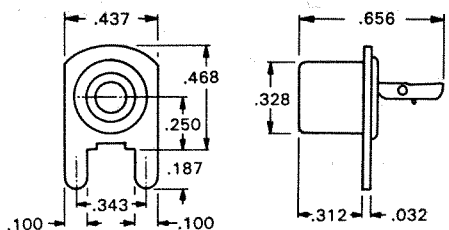
### MATERIAL

Shell: Steel - Nickel Plate  
Contact: Brass - Tin Plate

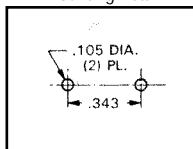
CAT. NO. 902

## 90° PC PHONO JACK

Mounted on bracket ready for insertion into pre-drilled holes



Mounting Detail



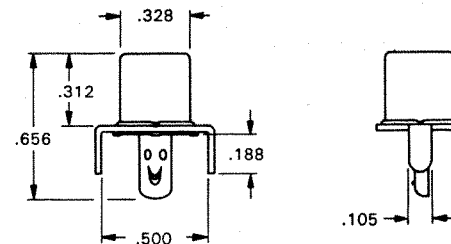
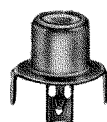
### MATERIAL

Shell: Steel  
Contact: Brass  
Plating: Tin

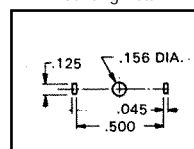
CAT. NO. 571

## VERTICAL PC PHONO JACK

For applications requiring staking to product



Mounting Detail



### MATERIAL

Shell: Steel  
Contact: Brass  
Plating: Tin

CAT. NO. 573