

## Magnifier Luminaire



**ARGUS - ARG 111**

connected load  
fitted with

work equipment  
mains lead  
luminaire body  
material  
surface

tubular sections  
material  
surface

weight (net)  
fastening

technology  
usage

lamp cover

class of protection

colour luminaire body

colour of tubular sections

lens; dimensions

lens; diopters

article no.

230 V; 50 Hz

1 x compact fluorescent lamp TC-S 11 W  
neutral white

conventional plug-in ballast

approx. 3.0 m; Euro plug

plastic  
painted

tubular aluminium section  
painted

approx. 1,9 kg

table base (accessory)~table clamp~wall bracket  
(accessory)

switchable

switch

acrylic; white opal

II

light grey

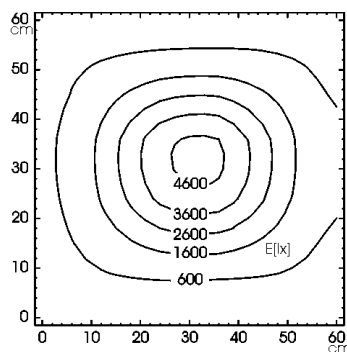
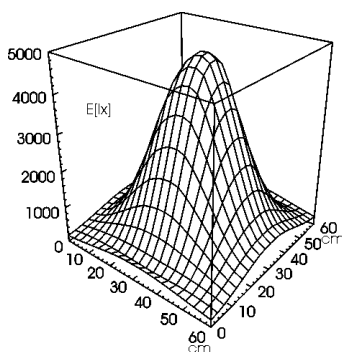
light grey

142 x 71

3

ARG00200B

E<sub>min</sub>: 165 lx  
E<sub>m</sub>: 1179 lx  
E<sub>max</sub>: 4591 lx



measuring conditions: d=15cm

