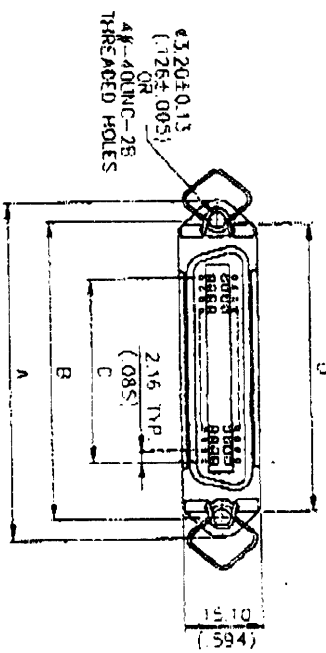
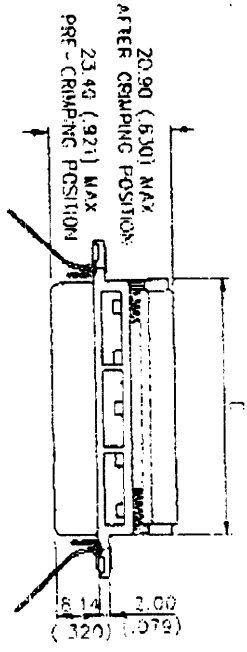


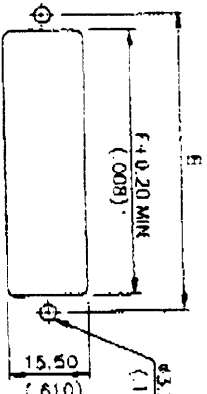
72/9

< 36939347

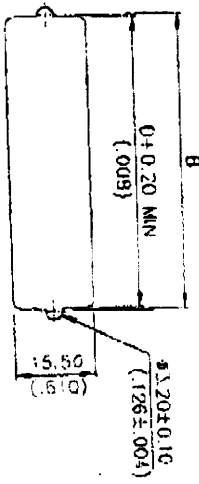


REV	ZONE	CTR	DESCRIPTION	DATE	PREPARED	APPD
4			按客户要求及注册	07/24-01/02	Lu Jk	

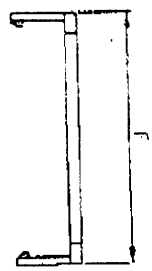
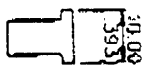
SPECIFICATIONS:
 Current rating : 1A : AWG28/1, 2A : AWG26
 Insulation resistance : >1000 MΩ
 Dielectric withstanding voltage : 500V at sea level
 Operating temperature : -55°C ~ 105°C (limited by cable)
 Contact resistance : <20mΩ
 Insulator material : polyester resin & glass reinforced UL 94V-0
 Contact material : phosphor bronze
 Contact plating : gold over nickel
 Wire size : AWG26 & AWG28 stranded, 1.27mm conductor center flat cable



RECOMMEND FRONT MOUNT PANEL



RECOMMEND REAR MOUNT PANEL



STRAIN RELIEF

ORDERING INFORMATION

SF 40 240 M 2 0 P S C A
 (1) (2) (3) (4) (5) (6) (7) (8) (9)

- Series Number :**
SF : I.D.C. ribbon connector
- Contact & Connecting types :**
10 : Plug, rock & panel connecting type
20 : Socket, rock & panel connecting type
30 : Plug, cable to panel connecting type
40 : Socket, cable to panel connecting type
- Number of Contacts :**
240 : 24 Positions
360 : 36 Positions
500 : 50 Positions
- Housing Construction Types :**
P : All plastic type
M : With metal front shell
- Color Codes :**
1 : Blue
2 : Gray
3 : Black
- Contact Finish :**
0 : Selected gold flash over nickel
1 : Selected gold plated over nickel
2 : Selected gold plated over nickel
3 : Selected gold plated over nickel
- Strain Relief :**
N : Without strain relief
P : Plastic strain relief
- Mounting Types :**
S : Standard Through holes
R : With rivet through holes
T : With #4-40UNC threaded insert
N : Without mounting holes
M : With M3*0.5 threaded holes
W : With M2.6*0.45 threaded holes
A : With #3.20 rivet
B : With 2#-56UNC threaded holes

FINISH	44	F	E	D	C	B	A	PART NO.
	4.0±0.25(0.010)	-0.25(0.010)	-0.25(0.010)	±0.13(0.005)	±0.13(0.005)	±0.25(0.010)		5F 40240M
	37.50 (1.476)	35.50 (1.398)	45.95 (1.809)	23.76 (0.935)	46.78 (1.842)	54.70 (2.154)		

EDA INC.

5F 40 SERIES RIBBON CONN.-RECEPTACLE WITH METAL FRONT SHELL

SCALE: 1:1

UNIT: mm(inch)

SHEET: 1/1

REV: 4

APPROVED: [Signature]

DRAWING NO.: R-SI05F-M

AS P105FMI

369-3934