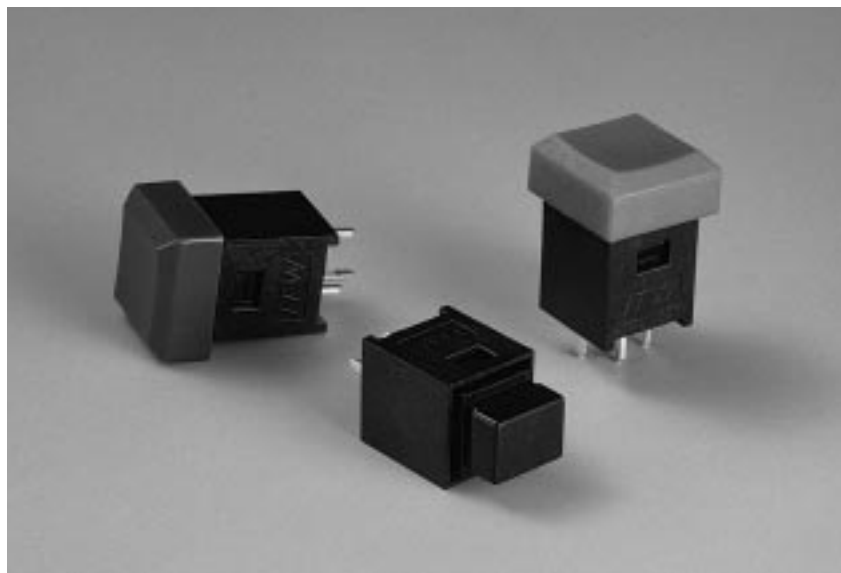


Series 60 – Dataswitch



Typical Applications

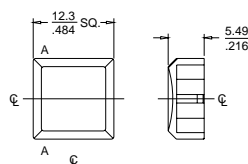
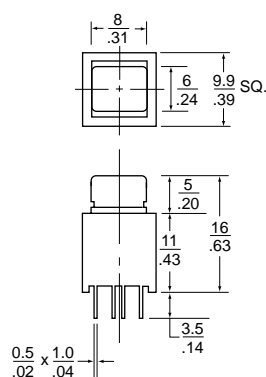
- Telephony equipment
- Computer equipment



actual size



Form A



Button

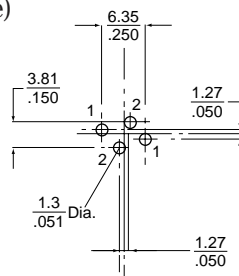
millimeters
inches

Features

- Designed for data input applications
- PCB terminals
- Switch is .39" square
- Designed for flow soldering and automatic cleaning; solvents must be compatible with "ABS" and glass-loaded "Noryl"
- Applications for instrumentation, telecommunications control and measuring equipment, entertainment equipment, consumer electronics, automotive

Mounting Information

PCB Pin Layout
(Component Side)



Mechanical and Electrical Characteristics

Mechanical function: Momentary click

Insulation resistance: 25,000 Mohm

Contact resistance: 25 mOhm

Operating temperature: -20°C to $+70^{\circ}\text{C}$
(-4°F to $+158^{\circ}\text{F}$)

Bounce time: <2 ms

Operating force: $<1.2\text{N}$ (120 g)

Operating travel: .7 mm (.03 in.)

Operating life: 250,000 cycles

Circuitry: SPST-NO momentary

Body: Black Noryl glass filled SE1 GFN2

Button: ABS Black

Contacts: Brass silver-plated

Spring: Bronze silver-plated

Ordering Information

Part Number	Description	Color
60-1000	Switch/rectangular button	–
60-4001	Button/Square	Black
60-4002	Button/Square	Red
60-4003	Button/Square	Green
60-4004	Button/Square	Light Grey

Electrical Characteristics

Circuitry	Current	Voltage
SPST-NO	20mA	35 VDC