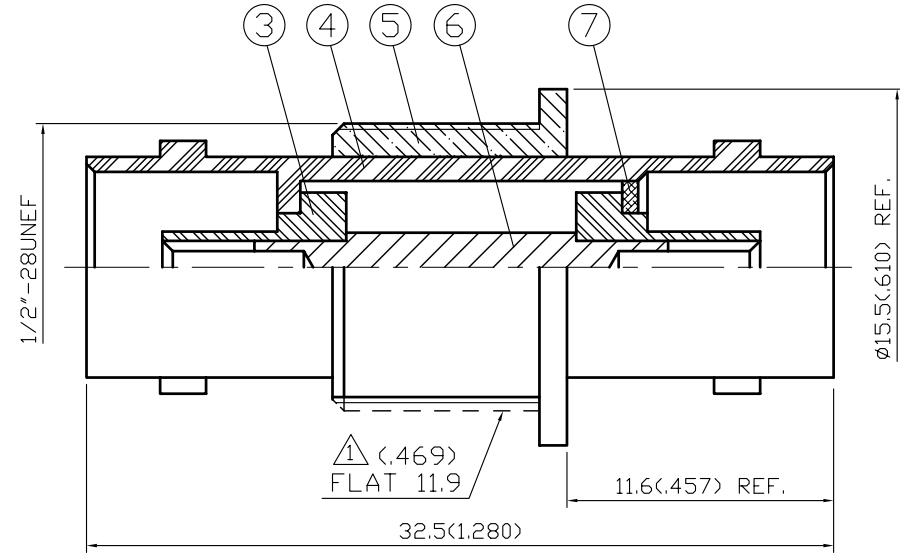
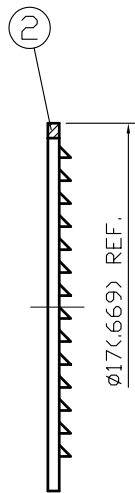
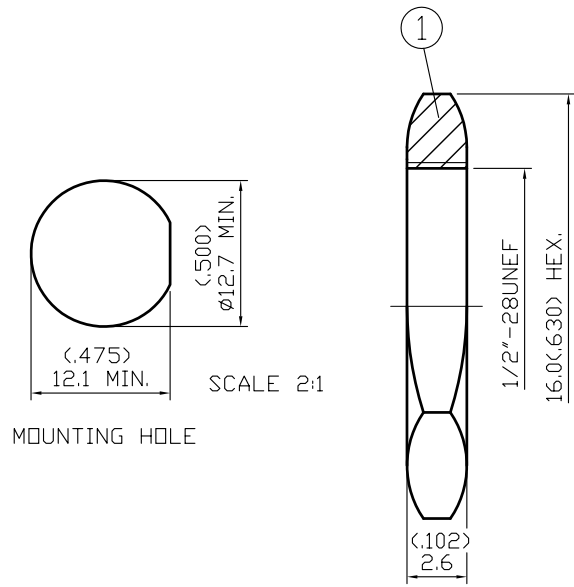


NO	DESCRIPTION	DATE
①	CHANGE THE DIRECTION OF FLAT	06.01.02



NOTES: UNLESS OTHERWISE SPECIFIED

1. BODIES: BRASS PER JIS-C3604
2. CENTER CONTACT: BRASS PER JIS-C3604
3. INSULATION: TEFLON PER ASTM D1457 AND ASTM D1710
4. PART TO BE CLEAN AND FREE OF BURRS

NO	DESCRIPTION	MATERIAL	Q'TY	FINISH
7	WASHER	BRASS	1	NICKEL 100μ" MIN.
6	CENTER CONTACT	BRASS	1	GOLD
5	INSULATION	ABS	1	NONE
4	BODY	BRASS	1	NICKEL 100μ" MIN.
3	INSULATION	POM	2	NONE
2	WASHER	IRON	1	NICKEL 100μ" MIN.
1	NUT	BRASS	1	NICKEL 100μ" MIN.

Farnell # 583546

製圖	DRAWN	TOLERANCE		品名	13-29-7 (75Ω)	日期	DATE	版次	REV.
		.X	±0.2	TITLE			12.24.94		A-1
檢圖	CHECK	.XX	±0.1	單位	DWG.NO. 13-0295				
		.XXX	±0.05	mm(in)	佳楠精密電子股份有限公司				
認定	APPROVAL	ANGLE	±5°	比例	CHIN NAN PRECISION ELECTRONICS CO.,LTD.				
				4:1					