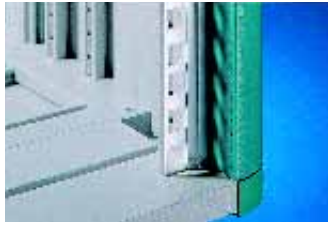


Instrument cases/system enclosures

Rittal RiCase accessories



Mounting angles 482.6 mm (19")

For front/rear installation of subracks and blanking plates.

Material:

Extruded aluminium section, clear-chromated

Supply includes:

Assembly parts.

Note:

1 pack of tapped strips and 2 packs of mounting rails and spacers are required for depth-adjustable installation.

For enclosure height	Packs of	Model No. RC
1 U	2	3751.650
2 U	2	3751.660
3 U	2	3751.670
4 U	2	3751.680
6 U	2	3751.690
7 U	2	3751.640
9 U	2	3751.780
12 U	2	3751.790

! Also required:

Slide-in strips, see page 564.
Mounting rails, see page 564.
Spacers, see page 564.



Threaded inserts

with M4 thread
for RiCase, Vario-Case iS

For the installation of mounting brackets, slide rails, mounting kits, cable ducts etc. Simply slide into the channels in the side panels.

Material:

Extruded aluminium section, clear-chromated

For enclosure height	Packs of	Model No. RC
1 U	8	3751.700
2 U	8	3751.710
3 U	8	3751.720
4 U	8	3751.730
6 U	8	3751.740
7 U	8	3751.750
9 U	8	3751.760
12 U	8	3751.770



Mounting rails

- For depth-variable installation of mounting angles
- For the installation of component shelves, static or pull-out

Material:

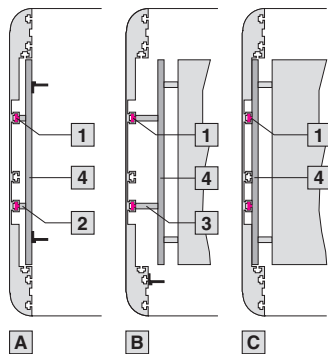
Aluminium, clear-chromated

Supply includes:

Assembly parts.

- A** Version for depth-variable mounting angles
- B** Component shelf installation for 482.6 mm/19" (width 409 mm, also with telescopic slides)
- C** Direct component shelf installation (width 471 mm)

- 1** Slide-in strips
- 2** Short spacers
- 3** Long spacers
- 4** Mounting rails



For enclosure depth mm	Packs of	Model No. RC
420	2	3751.410
540	2	3751.420

! Also required:

Threaded inserts, see page 564.
Spacers, see page 564.

+ Accessories:

Component shelf, see page 944.
Component shelf, 482.6 mm (19"), see page 939.



Spacers

For the attachment of mounting rails.

Version	Packs of	Model No. RC
Short for depth-variable mounting bracket	4	3751.450
Long for component shelf installation (width 409 mm)	4	3751.460