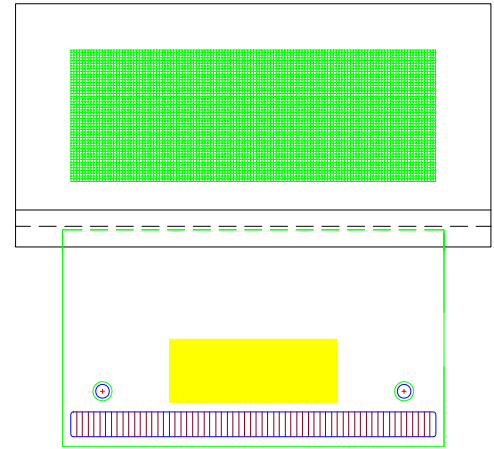


OLED DISPLAY SOLUTIONS

Pictiva™ 128x48 OLED display



OS128048PN11MXXB10

Features:

- Color On Demand, for a customized look and feel
- Graphics display matrix
- Single Color with 1 bit or 4-bit grayscale (per pixel)
- True emissive technology
- 180° viewing angle
- Passive matrix driven by an industry standard compatible IC
- Fast response, video frame rate capable
- High contrast
- Wide operating temperature range
- Thin profile

Specifications:

Display Format	128 Columns x 48 Rows				
Pixel Pitch	0.208 (H) x 0.200 (W) mm				
Pixel Size	0.178 (H) x 0.170 (W) mm				
Color, Luminance, & Lifetime	Color On Demand	CIE x	CIE y	cd/m ²	Lifetime hrs, 25°C
	Elegance Yellow	0.46	0.54	100	40K
	Light Green	0.44	0.56	70	40K
	Lime Green	0.36	0.63	100	10K
	Jungle Green	0.25	0.74	40	10K
	Clarity Orange	0.54	0.45	70	40K
	Tiger Orange	0.63	0.37	60	10K
	Scarlet Red	0.69	0.31	20	10K
Grayscale	1 or 4 bit				
Active Area	26.60 (W) X 9.57 (H) mm, 1.1 inch Diagonal				
Module Size	34.67 (W) X 32.20 (H) X 1.70 (T) mm				
Viewing Angle	180°				
Contrast Ratio	100:1 minimum				
Temperature	-30 to +70°C				
Voltage	2.4 – 3.5V (Logic), 12-13V (OLED Supply)				
Power	0.05mW (sleep mode)				
Interface	Parallel or Serial, TAB interconnect				
Driver	SSD1303/SSD0323 on TAB				
Weight	2.25g nominal				

OSRAM Opto Semiconductors Inc.
3870 North First Street, San Jose, CA 95134, USA
Phone: +1.888.446.7726 ext.4310
Web: www.pictiva.com

Osram holds a license from Cambridge Display Technology to manufacture and sell polymer light emitting displays. Information in this document shall not be considered as assured characteristics. All typical data and graphs are based on representative samples, but do not represent production range. Design and information may be changed without notice.

Ordering Information:

Osram Part Numbers:

1-bit Version

- Elegance Yellow: OS128048PN11MY0B10
- Light Green: OS128048PN11MY1B10
- Lime Green: OS128048PN11MG1B10
- Jungle Green: OS128048PN11MG2B10
- Clarity Orange: OS128048PN11MO0B10
- Tiger Orange: OS128048PN11MO1B10
- Scarlet Red: OS128048PN11MR1B10

4-bit Version

- Elegance Yellow: OS128048PK11MY0B10
- Light Green: OS128048PK11MY1B10
- Lime Green: OS128048PK11MG1B10
- Jungle Green: OS128048PK11MG2B10
- Clarity Orange: OS128048PK11MO0B10
- Tiger Orange: OS128048PK11MO1B10
- Scarlet Red: OS128048PK11MR1B10

Mechanical Dimensions & Pin Description:

