

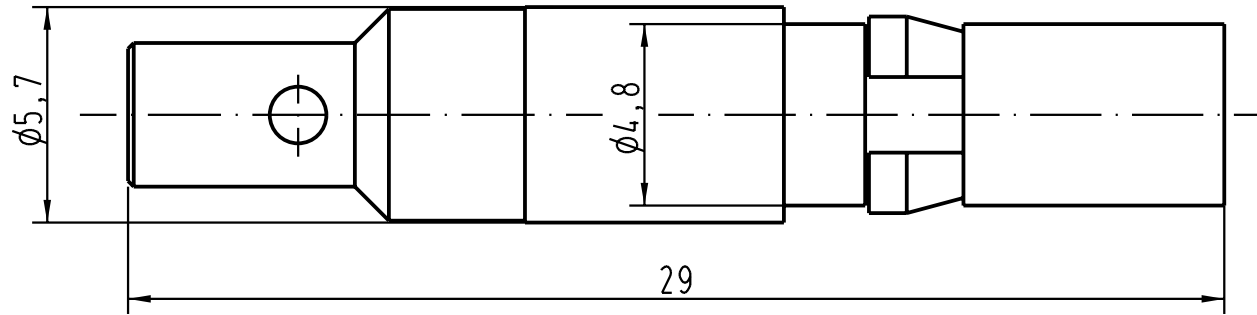
5

4

3

2

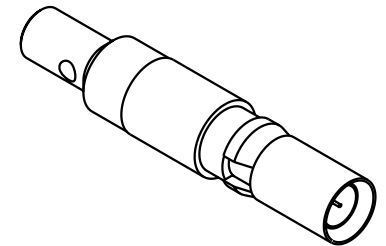
1





Eingebaut in Multikontakt-Modul 09 14 004 4512
mounted in multicontact-modul 09 14 004 4512

75 Ω Leitungen / 75 Ω wires
 RG 179B/U, RG 187A/U

für geraden Leiteranschluß zum Löten und/oder Crimpen
for straight solder and/or crimp terminations



 All Dimensions in mm Original Size DIN A 4		Techn. Character.			Nicht tolerierte Masse/ Free size tolerances	
			Dat.	Name	Massstab/Scale 5:1	Koaxialkontaktstift/ <i>coaxial male contact</i>
		Detail.	17.01.03	Loe.		
		Insp.		KR		
		Stand.				
410333		HARTING Electric GmbH & Co. KG D-32339 Espelkamp				TB 09 14 000 6121
Mod.	Dat.	Name				Sub.

D

C

B

A