

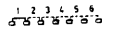
Miniature Slide Switches

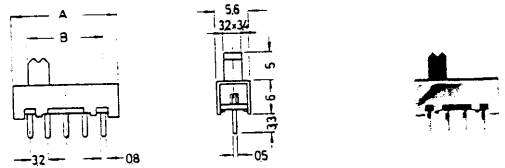
Specifications:

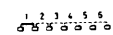
Contact rating:	125 V AC, 0,3 A
Contact resistance:	< 20 mΩ
Insulation resistance:	> 100 MΩ at 500 V DC
Dielectric strength:	500 V, 50 Hz for the duration of 1 minute
Mechanical life:	minimum 10 000 operations
Contacts:	Copper alloy, silver-plated over nickel barrier
Colour of slide:	see type

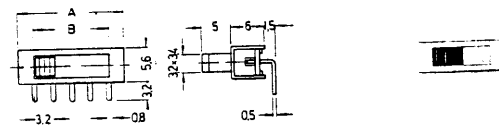
One and two pole switches with straight or right angle (R) pc terminals.

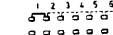
Models:	Operating positions	Connection diagram	Length (mm)	
			A	B

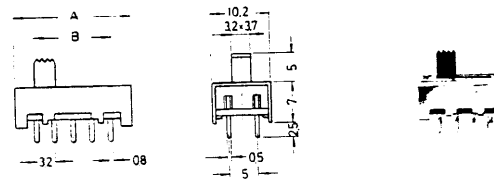
MFP 120	2		11,0	6,6
MFP 130	3		15,0	10,0
MFP 140	4		18,2	13,2
MFP 150	5		21,4	16,4
MFP 160	6		24,6	19,6
(black)				



MFP 120-R	2		11,0	6,6
MFP 130-R	3		15,0	10,0
MFP 140-R	4		18,2	13,2
MFP 150-R	5		21,4	16,4
MFP 160-R	6		24,6	19,6
(black)				



MFP 220	2		13,6	6,9
MFP 230	3		16,8	10,1
MFP 240	4		20,0	13,3
MFP 250	5		23,2	16,5
MFP 260	6		26,4	19,7
(black)				

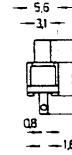
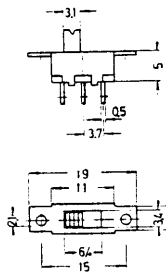


Specifications: see page 46
 One and two pole switches with solder tags.

Models: Switching Connection
 (Colour of slide) functions diagram

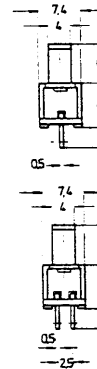
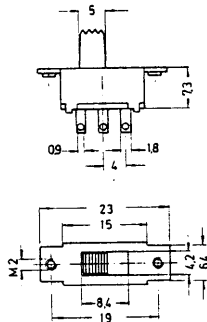
MFS 121 D
 (black)

on on



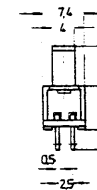
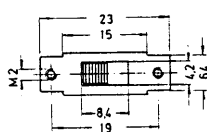
MFS 131 D
 (black/red)

on on



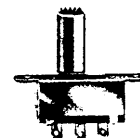
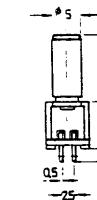
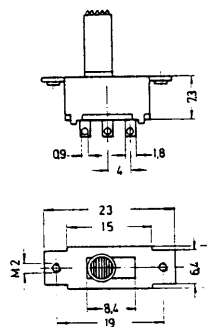
MFS 201 N
 (black/red)

on on



MFS 221 N
 (aluminium
 top black/red)

on on



MFS 231 P
 (black)

on on on

