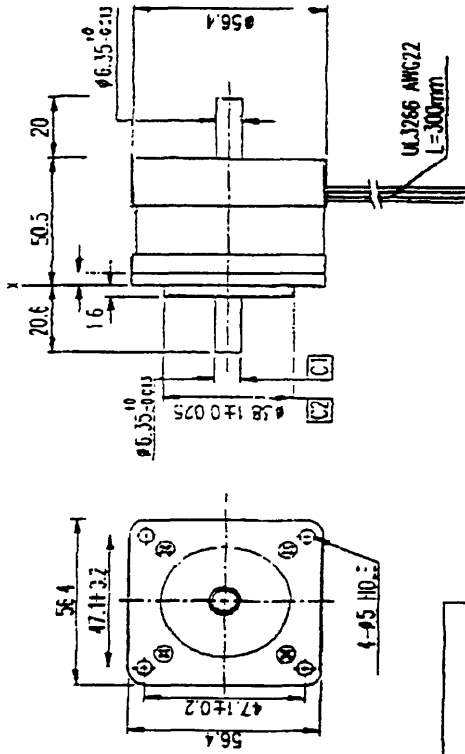


DIMENSION (UNIT : mm)



SPECIFICATION	VALUE
RATED VOLTAGE (V)AC	12
AMPS/PHASE	0.6
RESISTANCE /PHASE Rm (ohms)@25°C	20 ±10%
INDUCTANCE /PHASE mH @1KHz	35 ±20%
STEP ANGLE (DEG)	1.8
STEP ACCURACY (NON-ACCUM)	±5%
HOLDING TORQUE (kg-cm) @0.6A/0.2A-Ex.	5.5
ROTOR AERIAL (g-cmf)	110
WEIGHT (g)	500
TEMPERATURE RISE	MAX.80°C
INSULATION RESISTANCE	100M ohm @500VDC
DIELECTRIC STRENGTH	500VAC FOR ONE MINUTE
AMBIENT TEMPERATURE	-10°C ~ +50°C

NOTES:

1. C1 DIAMETER RUNOUT TO BE 0.05 mm MAX.
2. END CAPS TO BE PAINTED BLACK.

FULL STEP 2 PHASE-Ex.
WHEN FACING MOUNTING END (X)

STEP	A	B	A'	B'	COM	CCW	CV
1	ON		ON				
2		ON		ON		100V	
3			ON				ON
4	ON			ON			ON

REV	DESCRIPTION	DATE	APPD	ASUROSYN INTERNATIONAL TECHNOLOGY PLC	SCALE PRE 1 305 2 302 3 301	APVD KCC	01/9/96	STEPPING MOTOR	T180
-----	-------------	------	------	--	--------------------------------------	-------------	---------	----------------	------



T180 CONNECTION DIAGRAM

<p>DRIVE OUTPUTS & CONNECTION TYPE</p>	
	<p>1 RED 5 BLACK/WHITE 2 GREEN 6 RED/WHITE 3 BLACK 7 YELLOW/WHITE 4 YELLOW 8 GREEN/WHITE</p>
UNIPOLAR	TERMINAL COLOUR
$\phi 1$	1 RED
$\phi 1$	3 BLACK
$\phi 1$ Common	5 & 6 BLACK/WHITE & RED/WHITE
$\phi 2$	2 GREEN
$\phi 2$	4 YELLOW
$\phi 2$ Common	7 & 8 YELLOW/WHITE & GREEN/WHITE
BIPOLAR SERIES	
$\phi 1$	1 RED
$\phi 1$	3 BLACK
$\phi 2$	2 GREEN
$\phi 2$	4 YELLOW
Isolate - (LINK)	5 & 6 BLACK/WHITE & RED/WHITE
Isolate - (LINK)	7 & 8 YELLOW/WHITE & GREEN/WHITE
BIPOLAR PARALLEL	
$\phi 1$	1 & 5 RED & BLACK/WHITE
$\phi 1$	3 & 6 BLACK & RED/WHITE
$\phi 2$	2 & 7 GREEN & YELLOW/WHITE
$\phi 2$	4 & 8 YELLOW & GREEN/WHITE