

# Snap Action, Standard



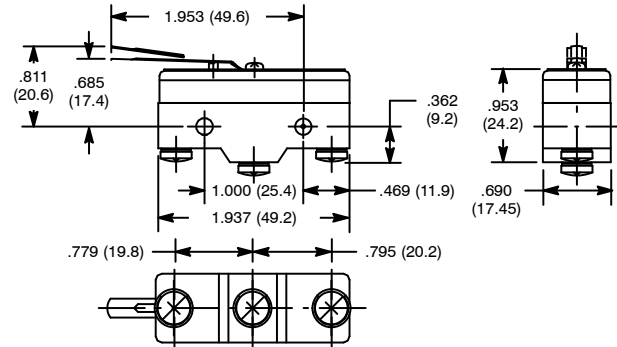
## Features

- Actuator: Hinge Lever



| NTE Type No. | Circuitry | Max. Pre-Travel | Min. Over Travel | Max. Operating Force | Max. Differential | Diag No. |
|--------------|-----------|-----------------|------------------|----------------------|-------------------|----------|
| 54-428       | SPDT      | 0.157"          | 0.063"           | 141g                 | 0.051"            | S53      |

## S53



## Specifications

**Current Rating:** 15A 125/250VAC, 0.5A 125VDC, 0.25A 250VDC  
1/8 HP 125VAC, 1/4 HP 250VAC  
**Contact Resistance:** 15 Milliohms (max.) initial  
**Insulation Resistance:** 100 Megohms at 500VDC  
**Dielectric Strength:** 1500VAC (50/60Hz for 1 minute)  
**Temperature Rating:** -13° to +176°F (-25° to +80°C)  
**Electrical Life:** 100,000 cycles min. (under rated load)  
**Mechanical Life:** 1,000,000 cycles min.  
**Terminal Type:** Screw Terminal

# Snap Action, Standard



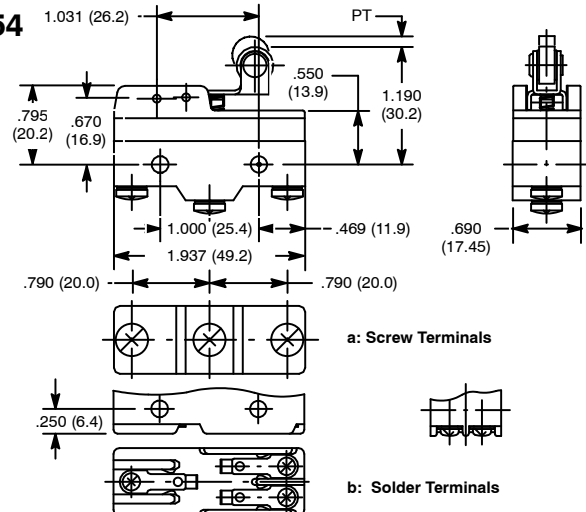
## Features

- Actuator: Short Hinge Roller Lever



| NTE Type No. | Circuitry | Max. Pre-Travel | Min. Over Travel | Max. Operating Force | Max. Differential | Diag No. |
|--------------|-----------|-----------------|------------------|----------------------|-------------------|----------|
| 54-429       | SPDT      | 0.22"           | 0.05"            | 70g                  | 0.02"             | S54b     |
| 54-440       | SPDT      | 0.09"           | 0.095"           | 160g                 | 0.02"             | S54a     |

## S54



## Specifications

**Current Rating:** 15A 125/250/480VAC, 0.5A 125VDC, 0.25A 250VDC  
1/8 HP 125VAC, 1/4 HP 250VA  
**Contact Resistance:** 50 Milliohms (max.) initial  
**Insulation Resistance:** 100 Megohms at 500VDC  
**Dielectric Strength:** 1000VAC (50/60Hz for 1 minute)  
**Temperature Rating:** -13° to +176°F (-25° to +80°C) with no icing  
**Electrical Life:** 500,000 cycles min. (under rated load)  
**Mechanical Life:** 20,000,000 cycles min.  
**Terminal Type:** Refer to Diag No. in Table