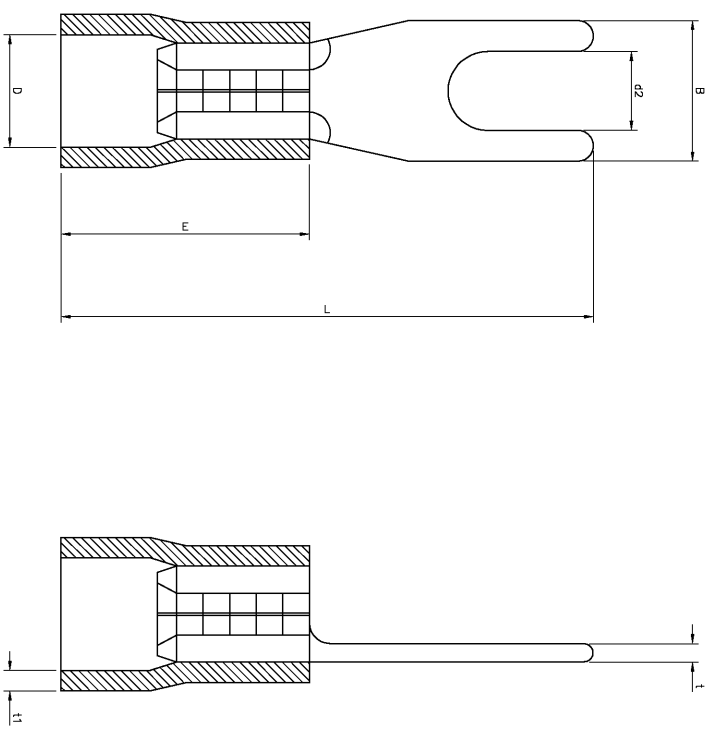


LOC	DIST	REV	DESCRIPTION	DATE	BY	CHK
E	B	P	LINK			
A		1	FIRST ISSUE	19AUG05	KR	FWK

- NOTES:
- FOR TECHNICAL DATA REFER TO YOUR LOCAL TFOE ELECTRONICS SALES OFFICE.
 - ALL DIMENSIONS ARE NOMINAL FOR REFERENCE ONLY UNLESS OTHERWISE STATED.
 - FOR PACKAGING DETAILS SEE SHEET 2.
 - UL NUMBER E13288.
 - MATERIAL: BODY - COPPER
SLEEVE - PVC (K85) 94V-0
 - APPLICATION SPEC 114-13196



STOCK NUMBER	PACKING LABEL DESCRIPTION LINE 3	3mm STUD SIZE STANDARD ENTRY	PACKING LABEL DESCRIPTION LINE 2	BLUE FORK TERMINAL (INSULATED)	PACKING LABEL DESCRIPTION LINE 1	QTY		DIMENSIONS							WIRE SIZE (mmsq) & (AWG)	SIZE (mm)	DESCRIPTION	PART No
						INNER CARTON QTY	QTY	d2 (±0.20)	B (±0.30)	L (±1.50)	D (±0.50)	E (±1.50)	t (±0.10)	t1 (±0.20)				
2-1838172-0	1.5mmsq - 2.5mmsq							3.20	5.70	22.50	4.70	11.00	0.80	0.80	1.5mmsq - 2.5mmsq	3.0	BLUE FORK TERMINAL (INSULATED)	2-1838172-0
1-1838172-0	16-14(AWG)														16-14(AWG)			1-1838172-0

THIS DRAWING IS A CONTROLLED DOCUMENT.

DIMENSIONS:		TOLERANCES UNLESS OTHERWISE SPECIFIED:	
mm		0 P/C	± 0.4
		1 P/C	± 0.2
		2 P/C	± 0.1
		3 P/C	± 0.075
		FINISH	±

MATERIAL: -

APPROVED: *[Signature]* DATE: 02/04/07
 S. Parlow
 K. Kragshjeldgaard
 TARGO
 Euro Electronics Corporation
 Bedford, UK, EX38 4HE

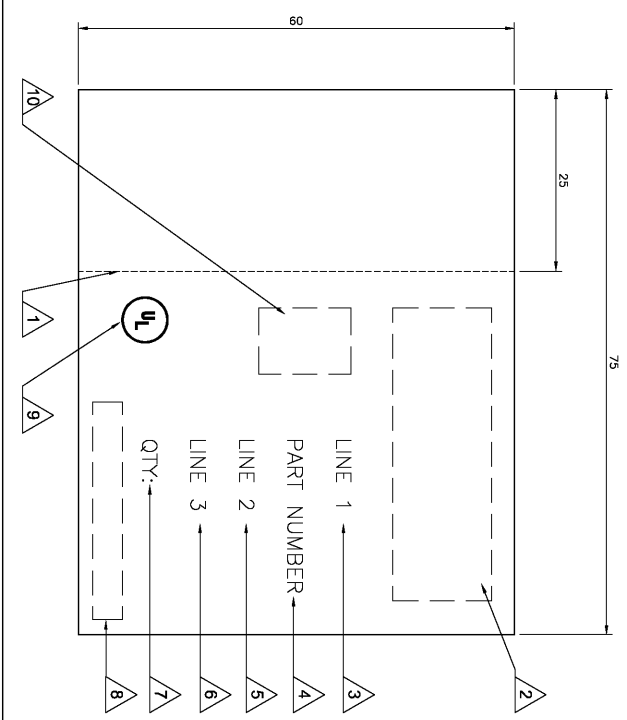
APPLICATOR: *[Signature]* DATE: 02/04/07
 S. Parlow
 K. Kragshjeldgaard
 TARGO
 Euro Electronics Corporation
 Bedford, UK, EX38 4HE

SIZE: A2
 DATE CODE: 00779
 DRAWING NO: 1838172
 RESTRICTED TO: -

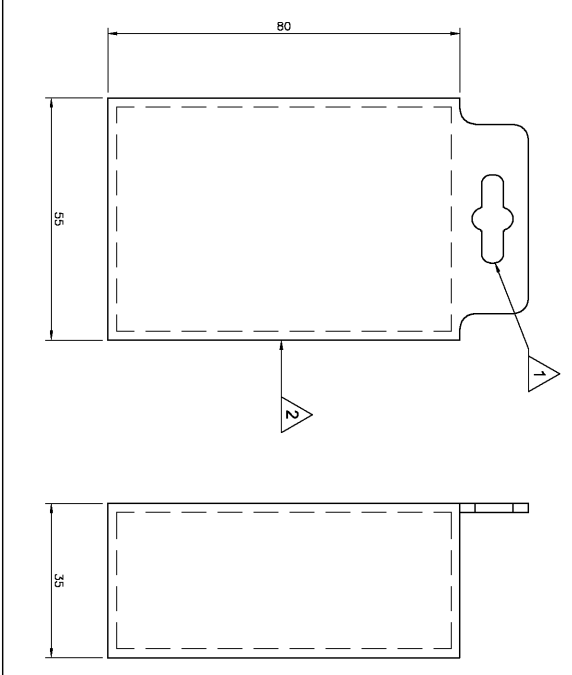
CUSTOMER DRAWING: -

SCALE: NTS
 SHEET: 1 of 2
 REV: A

BOX LABEL FIG 1



BOX FIG 2



LABEL NOTES:

- 1. PERFORATED LINE: DOTTED LINE TO BE ALIGNED WITH OPENING EDGE & FOLDED TO LEFT SIDE OF BOX.
- 2. LOGO: USE LATEST REVISION OF TYCO COMPANY LOGO.
- 3. LINE 1: SEE SHEET 1, USE TEXT FROM COLUMN PACKAGING LABEL DESCRIPTION LINE 1.
- 4. PART NUMBER: FOR 1--0 & 2--0 USE TYCO PART NUMBER. 1--0 = 1-1838172-0 2--0 = 2-1838172-0
- 5. LINE 2: SEE SHEET 1, USE TEXT FROM COLUMN PACKAGING LABEL DESCRIPTION LINE 2.
- 6. LINE 3: SEE SHEET 1, USE TEXT FROM COLUMN PACKAGING LABEL DESCRIPTION LINE 3.
- 7. QTY: SEE SHEET 1, USE NUMBER FROM THE COLUMN QTY.
- 8. EAN BARCODE: USE LATEST TYCO BARCODE SUPPLIED. 1--0 = TYCO BARCODE 2--0 = TYCO BARCODE
- 9. UL: WHERE APPLICABLE USE UL LOGO, SEE SHEET 1. A PRODUCT PICTURE IS REQUIRED.

BOX NOTES:

- 1. EURO SLOT: TO BE POSITIONED TO CENTRE ON FRONT COVER.
 - 2. BOX HINGE: FRONT COVER TO BE HINGED ON RIGHT SIDE.
 - 3. SPECIFICATION: COVER TO BE FREE FROM POSSIBLE WARPING & CAPABLE OF BEING RE-SEALED MIN 100 TIMES.
 - 4. LABEL: CORRECT CUSTOMER BOX LABEL TO BE POSITIONED ON THE FRONT COVER WITH THE PERFORATED EDGE ON THE LEFT HAND SIDE.
- PACK SPECIFICATION:**
- 1. CLEAR PLASTIC BOX: PART NUMBER 1--0 TO BE PACKED 100 Pairs PER CLEAR PLASTIC BOX (FIG 2) WITH THE CORRECT CUSTOMER LABEL (FIG 1). 35 CLEAR PLASTIC BOXES OF THE SAME PART NUMBER ARE TO BE PACKED INTO A SUITABLE INNER CARTON BOX.
 - 2. CLEAR PLASTIC BAG: PART NUMBER 2--0, USE A SUITABLE CLEAR PLASTIC BAG WITH A SUITABLE SEALING METHOD TO BE PACKED INTO 3 BAGS ARE THEN TO BE PACKED INTO A SUITABLE INNER CARTON BOX.
 - 3. INNER CARTON LABEL: LABEL AS PER CLEAR PLASTIC BAG NOTE 2 BUT WITH INNER CARTON QTY 3000 TO BE POSITIONED ON THE SIDE OF THE BOX FOR VIEWING WHEN STORED.

REVISIONS		DATE	BY
1	SEE SHEET 1		

THIS DRAWING IS A CONTROLLED DOCUMENT.		DATE: 02/04/07	
DRAWN BY: S. Parlow		CHECKED BY: S. Parlow	
DIMENSIONS: mm		TOLERANCES UNLESS OTHERWISE SPECIFIED:	
Ø	± 0.4	h.c	± 0.2
h.c	± 0.1	p.c	± 0.015
h.c	± 0.015	h.c	± 0.015
h.c	± 0.015	h.c	± 0.015
MATERIAL: -		FINISH: -	
CUSTOMER DRAWING		SCALE: NTS	
SIZE: A2		DRAWING NO: 1838172	
DATE CODE: 00779		RESTRICTED TO: -	

DATE: 02/04/07	BY: S. Parlow	CHECKED BY: S. Parlow
DRAWN BY: S. Parlow		
DIMENSIONS: mm		
TOLERANCES UNLESS OTHERWISE SPECIFIED:		
Ø	± 0.4	h.c
h.c	± 0.1	p.c
h.c	± 0.015	h.c
h.c	± 0.015	h.c
MATERIAL: -		
FINISH: -		
CUSTOMER DRAWING		
SCALE: NTS		
SIZE: A2		
DATE CODE: 00779		
DRAWING NO: 1838172		
RESTRICTED TO: -		