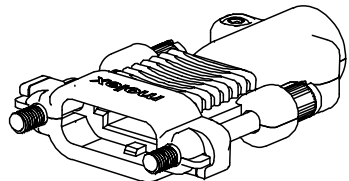
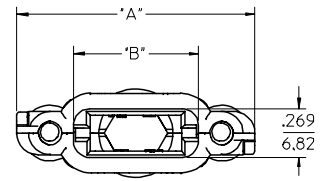
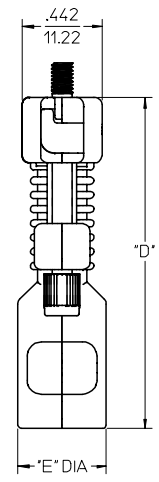
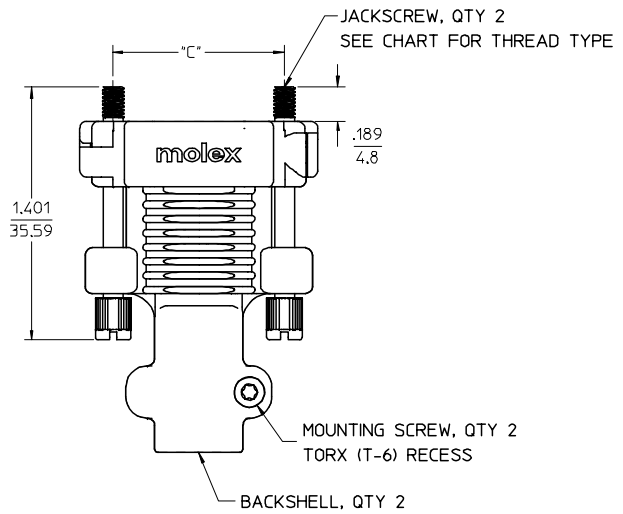


CKT SIZE	*A* DIM	*B* DIM	*C* DIM	*D* DIM	*E* DIM	CABLE OD
18	1.320/33.55	.691/17.56	.950/24.13	1.835/46.62	.490/12.45	.310/7.87
28	1.570/39.90	.941/23.91	1.200/30.48	1.835/46.62	.490/12.45	.335/8.51
38	1.820/46.25	1.191/30.26	1.450/36.83	2.270/57.65	.490/12.45	.355/9.02
48	2.070/52.60	1.441/36.61	1.700/43.18	2.478/62.93	.569/14.45	.440/11.18
72	2.670/67.84	2.041/51.85	2.300/58.42	2.741/69.62	.726/18.45	.635/16.13

- NOTES:
- MATERIALS:
 BACKSHELL - ZINC ALLOY DIE CAST, FINISH BLACK POLYURETHANE ENAMEL.
 JACKSCREW - STEEL ALLOY, FINISH BLACK OXIDE.
 MOUNTING SCREW - STEEL ALLOY, FINISH BLACK ZINC PLATING.
 - PLUG CABLE KIT COMPONENTS TO BE BULK PACKAGED PER PK-75115-990.
 - MOUNTING SCREW APPLICATION TORQUE TO BE MIN. 3 lbf-in AND NOT TO EXCEED 4 lbf-in.
 - STRAIN RELIEF IS DESIGNED FOR THE CABLE DIAMETER SPECIFIED IN TABLE ON THIS PAGE.
 WHEN USING SMALLER CABLE DIAMETER, USE HEAT SHRINK TUBING TO BUILD UP THE CABLE TO SPECIFIED DIAMETER.



18 CKT PLUG CABLE KIT



PLUG CABLE KIT (4-40 JACKSCREW)	PLUG CABLE KIT (M3 JACKSCREW)	CIRCUIT SIZE	NOT TOOLED	
75115-0072	75115-1072	72	X	CONTACT PRODUCT MARKETING
75115-0048	75115-1048	48		
75115-0038	75115-1038	38	X	CONTACT PRODUCT MARKETING
75115-0028	75115-1028	28		
75115-0018	75115-1018	18		

ADD NOT TOOLED EC NO: UCP2006-2055 DRWN:MSIBARRA 2006/03/10 CHKD:DMORGAN 2006/03/13 APPR:SMILLER 2006/03/13	DESCRIPTION REV	QUALITY SYMBOLS	GENERAL TOLERANCES (UNLESS SPECIFIED)	SCALE 2:1	DESIGN UNITS METRIC	THIRD ANGLE PROJECTION	REVISE ON CAD ONLY
		▽=0 ◻=0	m/m INCH 4 PLACES ± --- ± --- 3 PLACES ± --- ± .010 2 PLACES ± 0.25 ± --- 1 PLACE ± --- ± --- ANGULAR ±1/2°	DIMENSION STYLE IN/MM	TITLE SALES DRAWING TDP PLUG CABLE KIT BLACK FINISH		
		DRAFT WHERE APPLICABLE MUST REMAIN WITHIN DIMENSIONS	DRAWN BY DATE TMCCLELL 02/11/05 CHECKED BY DATE TMCCLELL 02/11/07 APPROVED BY DATE BANAKIS 02/11/07	MOLEX INCORPORATED MATERIAL NO. SEE CHART DOCUMENT NO. SD-75115-001 SHEET NO. 1 OF 1			
		THIS DRAWING CONTAINS INFORMATION THAT IS PROPRIETARY TO MOLEX INCORPORATED AND SHOULD NOT BE USED WITHOUT WRITTEN PERMISSION					