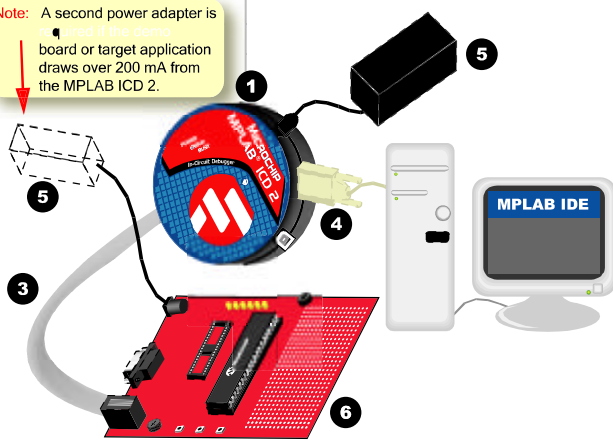


Setting Up the MPLAB[®] ICD 2

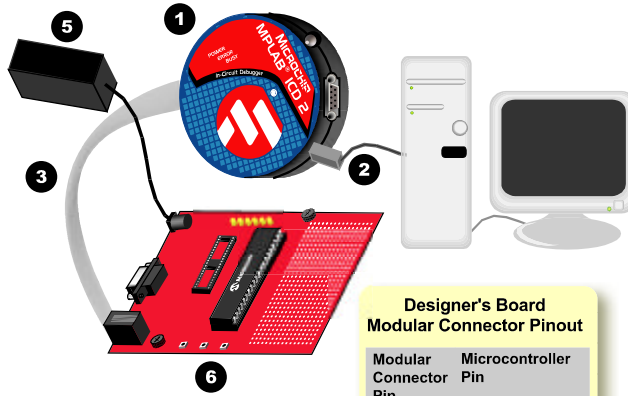
Using MPLAB ICD 2 as a Debugger with RS-232 Serial Port Connection

Note: A second power adapter is required if the demo board or target application draws over 200 mA from the MPLAB ICD 2.



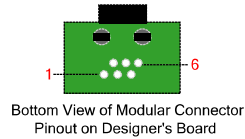
Note: You can use the MPLAB ICD 2 as a debugger with the PICDEM 2 Plus demo board or your own application.

Using MPLAB ICD 2 as a Debugger with USB Port Connection

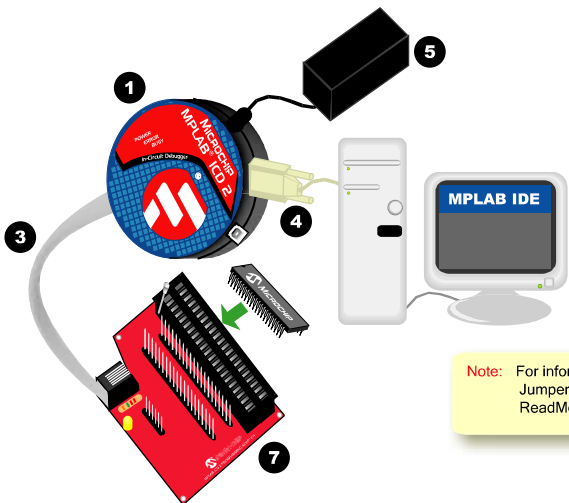


Designer's Board Modular Connector Pinout

Modular Connector Pin	Microcontroller
6	Not Used
5	RB6
4	RB7
3	Ground
2	VDD
1	VPP

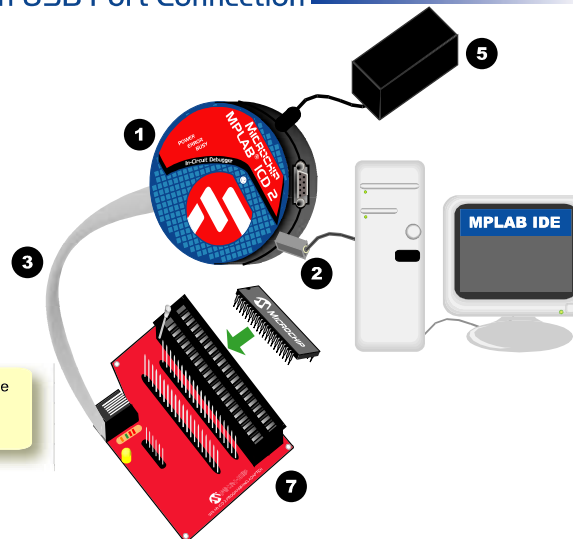


Using MPLAB ICD 2 as a Programmer with RS-232 Serial Port Connection



Note: For information on how to set the Jumper Select, see the ReadMe.ID2 file.

Using MPLAB ICD 2 as a Programmer with USB Port Connection



Software Setup

After you have finished setting up the hardware, you must configure the MPLAB IDE software for use with MPLAB ICD 2, or it will not work properly. See the MPLAB ICD 2 online help or the MPLAB ICD 2 Quick Start Guide for specific instructions.

Reserved Resources

In-circuit debugging uses the following on-chip resources:

- MCLR/VPP is shared for programming.
- Low-voltage ICSP programming is disabled.
- RB6 and RB7 are reserved for programming and in-circuit debugging.
- Two stack levels are not available.
- Several general purpose file registers are reserved (depending on device - see table below).
- The last 288 words of program memory area are reserved (see table below).

Processor	File Registers Used	Program Memory Used
PIC18F6720/8720	0xEF2-0xEFF	0x1FDC0-0x1FFFF
PIC18F6620/8620	0xEF2-0xEFF	0xFDC0-0xFFFF
PIC18F458/258/452/252	0x5F4-0x5FF	0x7DC0-0x7FFF
PIC18F448/248/442/242	0x2F4-0x2FF	0x3DC0-0x3FFF
PIC18C601/801	0x3F6-0x5FF	None

Pictured Items

Item Number	Item Description
1	MPLAB ICD 2 Module
2	USB Cable
3	MPLAB ICD 2 Interface Cable
4	RS-232 Serial Cable
5	+9 VDC Power Adapter
6	PICDEM 2 Plus Demo Board
7	Universal Programming Adapter

Kits and Options Available

Part Number	Kit Description	Contains These Pictured Items
DV164005	MPLAB ICD 2 Module	1, 2, 3
DV164006	MPLAB ICD 2 Evaluation Kit	1, 2, 3, 4, 5, 6
DV164007	MPLAB ICD 2 Module ws	1, 2, 3, 4, 5
AC162048	RS-232 Desk Top Kit	4, 5
AC162049	Universal Programming Module	7
DM163022	PICDEM 2 Plus Demonstration Kit	6

Note: Debugging and programming capabilities are limited to certain FLASH microcontrollers.

 **MICROCHIP**
The Embedded Control Solutions Company[™]
www.microchip.com

© 2002 Microchip Technology Inc., 1/02 D/S1265A