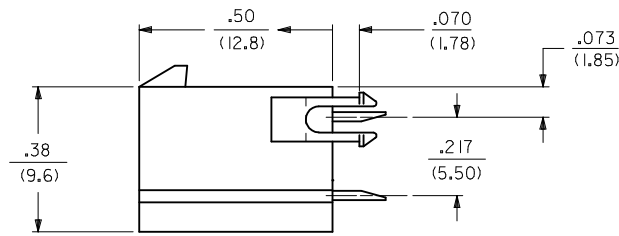
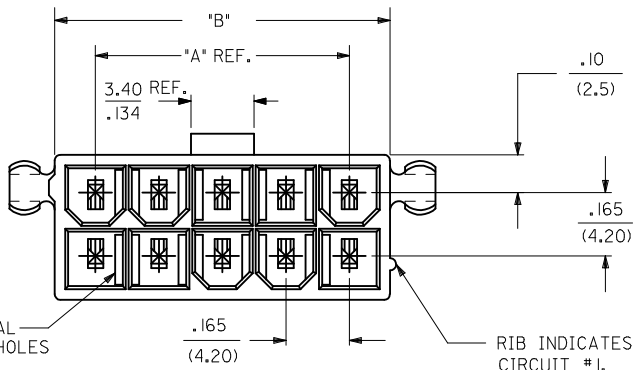


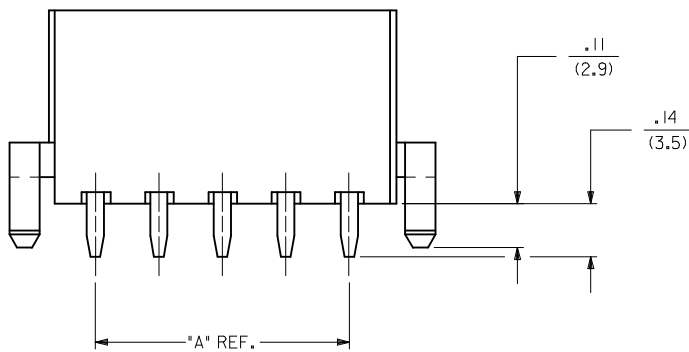
RECOMMENDED HOLE LAYOUT FOR  
 .070/(1.78) MAX. THICK P. C. BOARD

CIRCUIT SIZE	DIM. "A"	DIM. "B"	DIM. "C"
2	—	.21 (5.4)	.370 (9.40)
4	.17 (4.2)	.38 (9.6)	.535 (13.60)
6	.33 (8.4)	.54 (13.8)	.701 (17.80)
8	.50 (12.6)	.71 (18.0)	.866 (22.00)
10	.66 (16.8)	.87 (22.2)	1.031 (26.20)
12	.83 (21.0)	1.04 (26.4)	1.197 (30.40)
14	.99 (25.2)	1.20 (30.6)	1.362 (34.60)
16	1.16 (29.4)	1.37 (34.8)	1.528 (38.80)
18	1.32 (33.6)	1.54 (39.0)	1.693 (43.00)
20	1.49 (37.8)	1.70 (43.2)	1.858 (47.20)
22	1.65 (42.0)	1.87 (47.4)	2.024 (51.40)
24	1.82 (46.2)	2.03 (51.6)	2.189 (55.60)



**NOTES:**

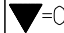
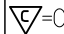
- HOUSING MATERIAL:  
 NYLON 6/6, U.L. 94V-2, COLOR: NATURAL.  
 NYLON 6/6, U.L. 94V-0, COLOR: NATURAL.
- TERMINAL MATERIAL: COPPER ALLOY
- TERMINAL PLATING:  
 1 - .000100/(.00254) MIN. BRIGHT TIN OVER .000050/(.00127) MIN. NICKEL OVERALL  
 2 - .000030/(.00080) MIN. SELECT GOLD, .000100/(.00254) MIN. MATTE TIN OVER .000050/(.00127) MIN. NICKEL OVERALL
- PART IS DESIGNED IN METRIC.
- PART MATES WITH MINI-FIT JR. RECEPTACLE NO. 5557.
- PRODUCT SPECIFICATION: PS-45750-001
- PARTS ARE NOT TO BE MATED OR UN-MATED WHILE CIRCUITS ARE LIVE.
- PARTS TO HAVE "HCS+" MARKING
- PACKAGING SPECIFICATION: PK-5566-001.
- PART CONFORMS TO CLASS B OF COSMETIC SPECIFICATION PS-45499-002.



<b>NOTE 9: CHG PKG. SPEC.</b> EC NO: UCP2009-0751 DRWN: BWIRKUS 2008/09/29 CHKD: BWIRKUS 2008/09/29 APPR: BWIRKUS 2008/10/02	QUALITY SYMBOLS	GENERAL TOLERANCES (UNLESS SPECIFIED)	DIMENSION STYLE	SCALE	DESIGN UNITS	THIRD ANGLE PROJECTION
	$\nabla=0$ $\nabla=0$	mm INCH	IN/MM	METRIC		
		4 PLACES ± --- ± ---	DRAWN BY DATE	TITLE	VERTICAL HEADER ASSEMBLY	
		3 PLACES ± --- ± .010	CHECKED BY DATE	DUAL ROW		
	2 PLACES ± 0.25 ± .015	APPROVED BY DATE	MINI-FIT PLUS HCS SERIES			
	1 PLACE ± 0.38 ± ---	JCOMERC I	MOLEX INCORPORATED			
	ANGULAR ± 1/2°	MATERIAL NO.	DOCUMENT NO.		SHEET NO.	
	DRAFT WHERE APPLICABLE MUST REMAIN WITHIN DIMENSIONS	SEE TABLE	SD-46015-001		1 OF 2	
			THIS DRAWING CONTAINS INFORMATION THAT IS PROPRIETARY TO MOLEX INCORPORATED AND SHOULD NOT BE USED WITHOUT WRITTEN PERMISSION			

	13	12	11	10	9	8	7	6	5	4	3	2	1												
	ITEM NO.	CKT SIZE	HOUSING MATERIAL	DRAIN HOLES	PEGS	PLATING	ITEM NO.	CKT SIZE	HOUSING MATERIAL	DRAIN HOLES	PEGS	PLATING	ITEM NO.	CKT SIZE	HOUSING MATERIAL	DRAIN HOLES	PEGS	PLATING							
J	46015-0200	2	V-0	YES	NO	TIN	46015-1400	14	V-0	YES	NO	TIN	46015-2400	24	V-0	YES	NO	TIN							
	46015-0201				YES		YES				46015-1401					NO	YES			46015-2401		NO	YES		
	46015-0202				NO		NO				46015-1402					NO	NO			46015-2402		NO	NO		
	46015-0203				NO		YES				46015-1403					NO	YES			46015-2403		NO	YES		
I	46015-0204	2	V-2	YES	NO	TIN	46015-1404	14	V-2	YES	NO	TIN	46015-2404	24	V-2	YES	NO	TIN							
	46015-0205				YES		YES				46015-1405					NO	YES			46015-2405		NO	YES		
	46015-0206				NO		NO				46015-1406					NO	NO			46015-2406		NO	NO		
	46015-0207				NO		YES				46015-1407					NO	YES			46015-2407		NO	YES		
	46015-0208		V-0	YES	YES	GOLD	46015-1408		V-0	YES	YES	GOLD	46015-2408		V-0	YES	YES	GOLD							
H	46015-0400	4	V-0	YES	NO	TIN	46015-1600	16	V-0	YES	NO	TIN				NO									
	46015-0401				YES		YES				46015-1601					NO			YES		46015-1602		NO	YES	
	46015-0402				NO		NO				46015-1603					NO			NO		46015-1604		NO	YES	
	46015-0403				NO		YES				46015-1605					NO			YES		46015-1606		NO	YES	
	46015-0404			YES	NO				46015-1607		NO		NO			46015-1608			NO	YES					
	46015-0405			YES	YES				46015-1800		NO		YES			46015-1801			NO	YES					
	46015-0406			NO	NO				46015-1802		NO		NO			46015-1803			NO	YES					
	46015-0407			NO	YES				46015-1804		NO		YES			46015-1805			NO	YES					
	46015-0408		V-0	YES	YES	GOLD	46015-1806		V-2	NO	NO		46015-1807		V-0	YES	YES	GOLD							
G	46015-0600	6	V-0	YES	NO	TIN	46015-1808	18	V-0	YES	NO	TIN				NO									
	46015-0601				YES		YES				46015-1809					NO			YES		46015-1810		NO	YES	
	46015-0602				NO		NO				46015-1811					NO			NO		46015-1812		NO	YES	
	46015-0603				NO		YES				46015-1813					NO			YES		46015-1814		NO	YES	
	46015-0604			YES	NO				46015-1815		YES		NO			46015-1816			YES	NO					
	46015-0605			YES	YES				46015-1817		NO		YES			46015-1818			NO	YES					
	46015-0606			NO	NO				46015-1819		NO		NO			46015-1820			NO	YES					
	46015-0607			YES	YES				46015-1821		NO		YES			46015-1822			NO	YES					
F	46015-0608		V-0	YES	YES	GOLD	46015-1823		V-0	YES	YES	GOLD	46015-1824		V-0	YES	YES	GOLD							
	46015-0800	8	V-0	YES	NO	TIN	46015-2000	20	V-0	YES	NO	TIN				NO									
	46015-0801				YES		YES				46015-2001					NO			YES		46015-2002		NO	YES	
	46015-0802				NO		NO				46015-2003					NO			NO		46015-2004		NO	YES	
	46015-0803				YES		NO				46015-2005					YES			NO		46015-2006		YES	NO	
	46015-0804			YES	YES				46015-2007		NO		NO			46015-2008			NO	YES					
	46015-0805			NO	NO				46015-2009		NO		YES			46015-2010			NO	YES					
	46015-0806			NO	YES				46015-2011		NO		YES			46015-2012			NO	YES					
	46015-0807			NO	NO				46015-2013		NO		NO			46015-2014			NO	YES					
	46015-0808		V-0	YES	YES	GOLD	46015-2015		V-0	YES	YES	GOLD	46015-2016		V-0	YES	YES	GOLD							
D	46015-1000	10	V-0	YES	NO	TIN	46015-2200	22	V-0	YES	NO	TIN				NO									
	46015-1001				YES		YES				46015-2201					NO			YES		46015-2202		NO	YES	
	46015-1002				NO		NO				46015-2203					NO			NO		46015-2204		NO	YES	
	46015-1003				YES		YES				46015-2205					YES			NO		46015-2206		YES	NO	
	46015-1004			YES	NO				46015-2207		NO		NO			46015-2208			NO	YES					
	46015-1005			YES	YES				46015-2209		NO		YES			46015-2210			NO	YES					
	46015-1006			NO	NO				46015-2211		NO		NO			46015-2212			NO	YES					
	46015-1007			NO	YES				46015-2213		NO		YES			46015-2214			NO	YES					
	46015-1008		V-0	YES	YES	GOLD	46015-2215		V-0	YES	YES	GOLD	46015-2216		V-0	YES	YES	GOLD							
C	46015-1200	12	V-0	YES	NO	TIN	46015-2400	24	V-0	YES	NO	TIN				NO									
	46015-1201				YES		YES				46015-2401					NO			YES		46015-2402		NO	YES	
	46015-1202				NO		NO				46015-2403					NO			NO		46015-2404		NO	YES	
	46015-1203				NO		YES				46015-2405					NO			YES		46015-2406		NO	YES	
	46015-1204			YES	NO				46015-2407		NO		NO			46015-2408			NO	YES					
	46015-1205			YES	YES				46015-2409		NO		YES			46015-2410			NO	YES					
	46015-1206			NO	NO				46015-2411		NO		NO			46015-2412			NO	YES					
	46015-1207			NO	YES				46015-2413		NO		YES			46015-2414			NO	YES					
	46015-1208		V-0	YES	YES	GOLD	46015-2415		V-0	YES	YES	GOLD	46015-2416		V-0	YES	YES	GOLD							

SEE SHEET 1  
EC NO: UCP2009-0751  
DRWN: BWRKUS 2008/09/29  
CHKD: BWRKUS 2008/09/29  
APP: BWRKUS 2008/10/02

QUALITY SYMBOLS  
 = 0  
 = 0

GENERAL TOLERANCES (UNLESS SPECIFIED)

	mm	INCH
4 PLACES	± .05	± .002
3 PLACES	± .03	± .001
2 PLACES	± 0.25	± .010
1 PLACE	± 0.38	± .015

ANGULAR ±1/2°

DIMENSION STYLE  
IN/MM

DRAWN BY DATE: TREGORI 2006/04/27

CHECKED BY DATE: JCOMERC I

APPROVED BY DATE: JCOMERC I


MATERIAL NO. DOCUMENT NO.

SCALE 1:1

DESIGN UNITS METRIC

THIRD ANGLE PROJECTION

TITLE  
VERTICAL HEADER ASSEMBLY  
DUAL ROW  
MINI-FIT PLUS HCS SERIES

 MOLEX INCORPORATED

SHEET NO. 2 OF 2

DRAFT WHERE APPLICABLE MUST REMAIN WITHIN DIMENSIONS

THIS DRAWING CONTAINS INFORMATION THAT IS PROPRIETARY TO MOLEX INCORPORATED AND SHOULD NOT BE USED WITHOUT WRITTEN PERMISSION