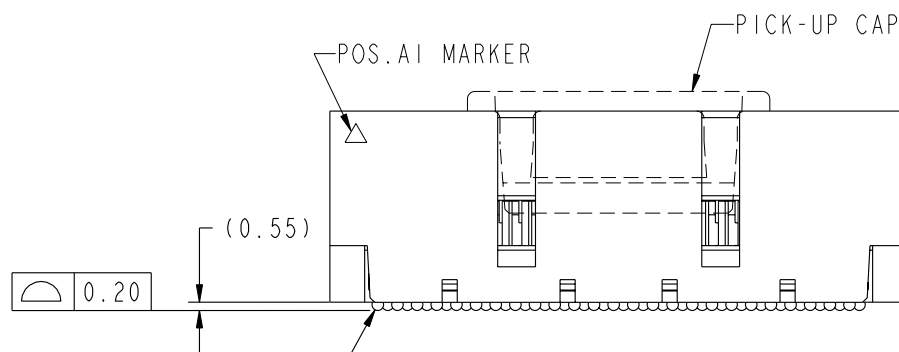
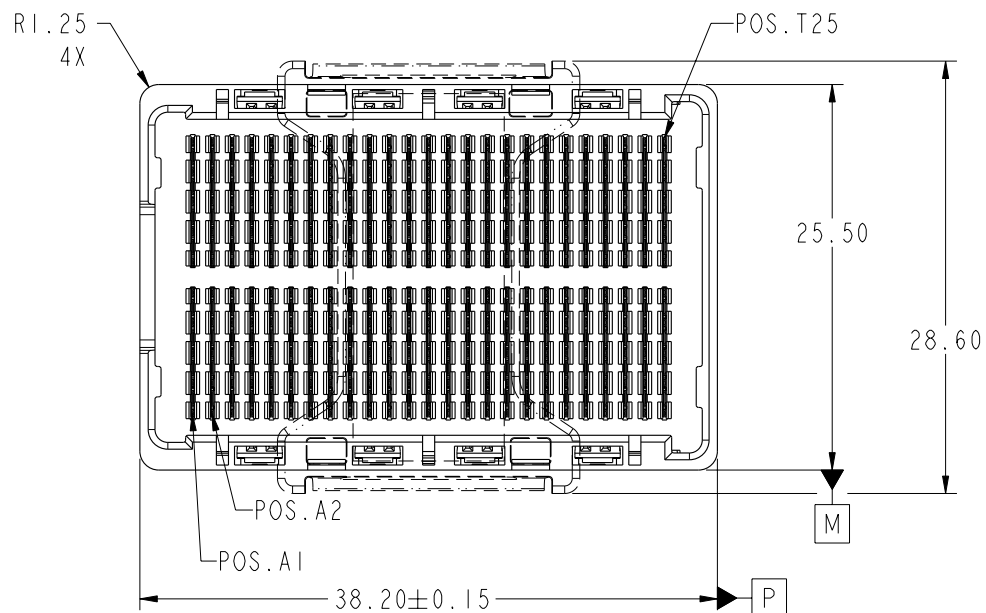





This document is the property of and embodies
CONFIDENTIAL and PROPRIETARY information of FCI.
No part of the information shown on this
document may be used in any way or disclosed
to others without the written consent of FCI.
Copyright FCI.



Ø 0.76 SOLDER BALLS
450X
SEE NOTE 2

Ø 0.30 P M

| | | | | | | | | | | | | | | | | | | | |
|-------------|----------------|-----|------------|------------|---------------------|--|--|---------------------------------------|---|---|---|-----------------------------|--------------------|-----------------|-------------|--|--------------------|-----------------|--|
| mat'l code | | | | SEE NOTE 1 | | | | tolerances unless otherwise specified | | | | CUSTOMER | | | |  www.fciconnect.com | | | |
| ltr | ecn no. | dr | date | linear | 0.X ± 0.3 | | | | projection  |  MM scale 1:1 | title GIG-Array 13mm PLUG ASSY. 200 SIG. POS. | | | | | | | | |
| A | V05-0062 | TAB | 01/19/05 | | 0.XX ± 0.10 | | | | | | angles | product family GIG-Array | | | | code 213 | | | |
| B | V05-0052 | VS | 10/14/05 | | 0.XXX ± 0.050 | | | | | | | size A | | | | | dwg no 10030626 | sheet 1 of 4 | |
| C | V06-0558 | LP | 2006/06/12 | 0° ± 2° | | | | product family GIG-Array | | | | code 213 | | | | | | | |
| D | V07-0440 | LP | 2007-07-05 | dr | T.BRUNGARD 06/20/03 | | | | size A | | | | dwg no 10030626 | sheet 1 of 4 | | | | | |
| | | | | enrg | M.STRAWER 06/20/03 | | | | product family GIG-Array | | | | | | code 213 | | | | |
| | | | | chr | M.STRAWER 06/20/03 | | | | size A | | | | dwg no 10030626 | sheet 1 of 4 | | | | | |
| | | | | appd | M.STRAWER 06/20/03 | | | | product family GIG-Array | | | | | | code 213 | | | | |
| sheet index | revision sheet | D 1 | D 2 | D 3 | D 4 | | | | | | | | | | | | | | |

Pro/E

3

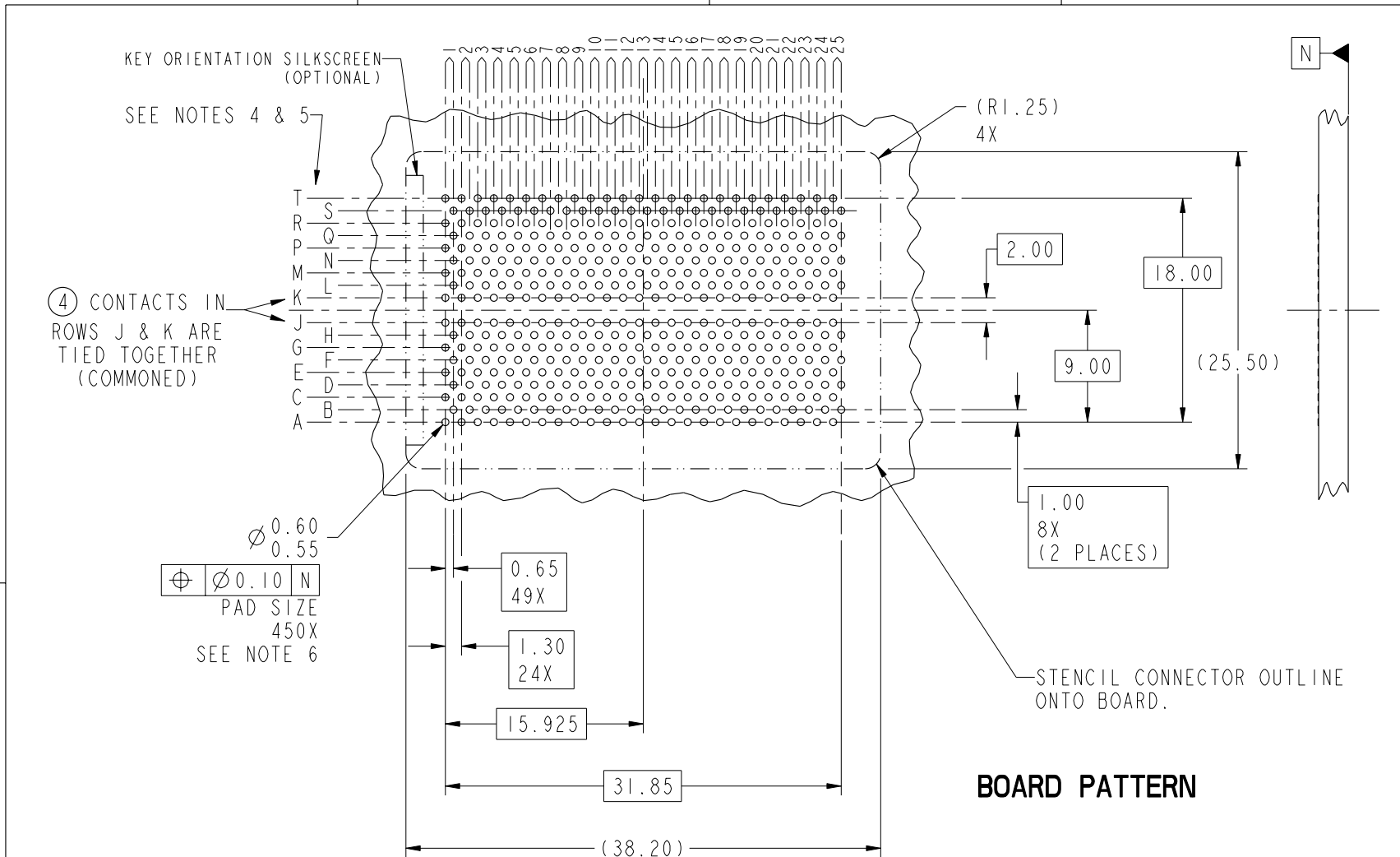
cage code 22526

4

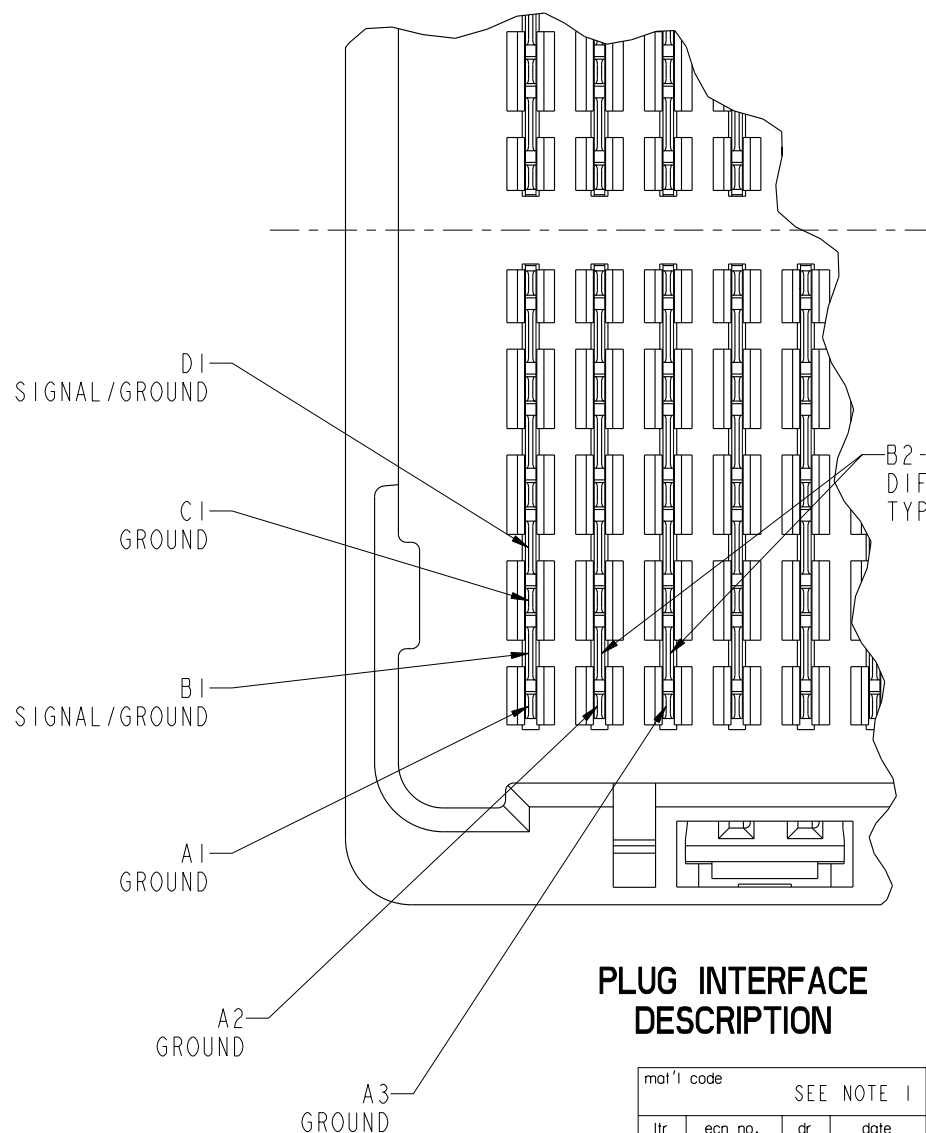
PDM: Rev:D

STATUS: Released

Printed: Dec 03, 2007



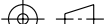
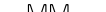
| mat'l code | | | | tolerances unless otherwise specified | | CUSTOMER | | FCI | |
|-------------|----------------|----|------|---------------------------------------|---------------------|------------|-----|---|----------|
| SEE NOTE 1 | | | | | | COPY | | www.fciconnect.com | |
| ltr | ecn no. | dr | date | linear | 0.X ±0.3 | projection | | title GIG-Array 13mm PLUG ASSY. 200 SIG. POS. | |
| D | - | - | - | | 0.XX ±0.10 | | | | |
| | | | | | 0.XXX ±0.050 | | | | |
| | | | | angles | 0° ±2° | MM | | product family GIG-Array | |
| | | | | dr | T.BRUNGARD 06/20/03 | | | size | code 213 |
| | | | | enr | M.STRAWER 06/20/03 | | | | sheet 2 |
| | | | | chr | M.STRAWER 06/20/03 | scale | 2:1 | A 10030626 | |
| | | | | appd | M.STRAWER 06/20/03 | | | | |
| sheet index | revision sheet | | | | | | | cage code 22526 | |



PLUG INTERFACE DESCRIPTION

NOTES:

- ① MATERIAL:
HOUSING: LCP
CONTACT: COPPER ALLOY
PLATING (CONTACT): Au OVER Ni.
UL RATING: 94 V-0
SOLDER BALL: (SEE TABLE) EUTECTIC
SnPb OR LEADFREE 95.5 Sn/4Ag/0.5Cu
- ② SOLDER BALLS WILL NOT BE PERFECT
SPHERICAL SHAPE DUE TO REFLOW ATTACHMENT.
- ③ MATED HEIGHT EFFECTED BY CUSTOMERS'
PCB PAD SIZE, PLATING, SOLDER REFLOW
PROFILE & SOLDER PASTE.
- ④ CONTACTS IN ROWS A,C,E,G,J,K,M,P,R AND T
ARE SINGLE BEAM CONTACTS,
TYPICALLY USED AS GROUND PINS.
(NOTE: CONTACTS IN ROWS J & K ARE
TIED TOGETHER [COMMONED])
- ⑤ CONTACTS IN ROWS B,D,F,H,L,N,Q AND S
ARE DUAL BEAM CONTACTS,
TYPICALLY USED AS SIGNAL PINS.

| | | | | | | | | | | | |
|-------------|---------|----------------|------|------------|--------------------|--|---|----------|---|-------------------------------|----------|
| mat'l code | | | | SEE NOTE 1 | | tolerances unless otherwise specified | | CUSTOMER | | FCi www.fciconnect.com | |
| ltr | ecr no. | dr | date | linear | 0. X \pm 0.3 | | COPY | | title GIG-Array 13mm PLUG ASSY. 200 SIG. POS. | | |
| D | - | - | - | | 0. XX \pm 0.10 | | projection  | | | | |
| | | | | | 0. XXX \pm 0.050 | | | | | | |
| | | | | angles | 0° \pm 2° | |  MM | | product family | | code |
| | | | | dr | T.BRUNGARD | 06/20/03 | | | GIG-Array | | 213 |
| | | | | enrg | M.STRAWSER | 06/20/03 | | | size | | |
| | | | | chr | M.STRAWSER | 06/20/03 | dwg no | | | | |
| | | | | appd | M.STRAWSER | 06/20/03 | scale 7:1 | | A | | 10030626 |
| sheet index | | revision sheet | | | | | | | | | |

Pro/E

3

cage code 22526

4

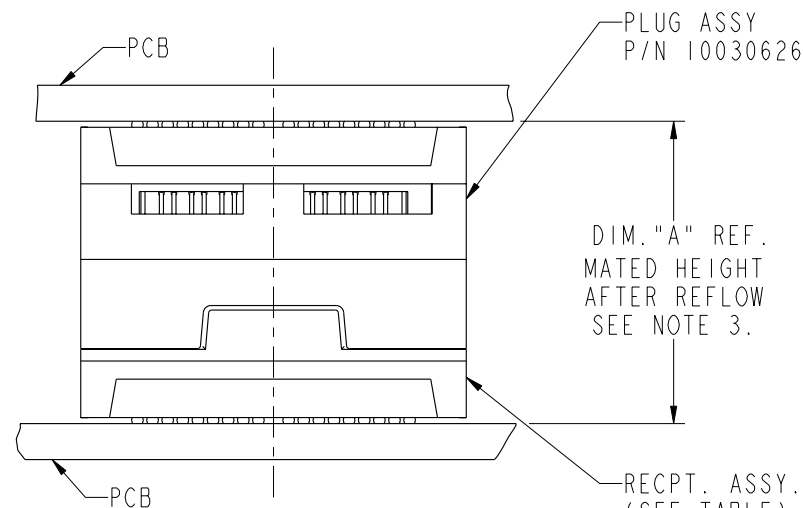
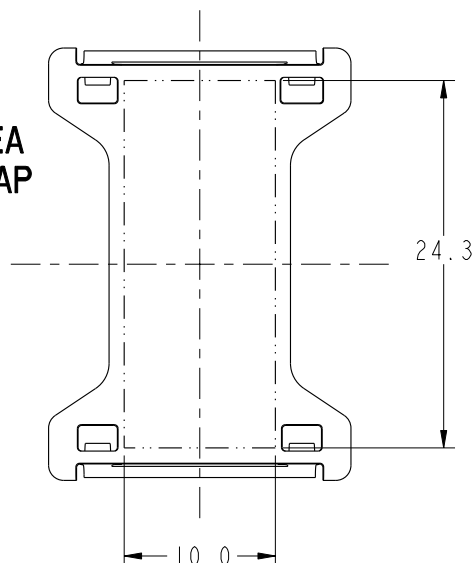
PDM: Rev:D

STATUS: Released

Printed: Dec 03, 2007

| | |
|----------------|------------------------|
| PRODUCT NUMBER | SOLDER BALL |
| 10030626-001 | SnPb |
| 10030626-001LF | SnAgCu LEADFREE (7)(8) |

FLAT AREA
PICK-UP CAP



END VIEW OF MATED CONNECTORS

| DIM. "A" | RECPT. ASSY. P/N |
|----------|------------------|
| 18 | 55740 |
| 23 | 10026010 |
| 28 | 55741 |


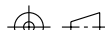
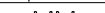
NOT TOOLED

NOTES CONTINUED

(6) SPECIFIED POSITIONAL TOLERANCE DEFINES PAD TO PAD LOCATION WITHIN LAND PATTERN. POSITIONAL TOLERANCE OF LAND PATTERN TO FUDICIAL MARKS OR PCB DATUMS SHALL BE DEFINED BY CUSTOMER. FOR RECOMMENDED PRODUCT APPLICATION AND PCB DESIGN DETAILS, SEE DOC. NO. GS-20-016.

(7) FOR PROPER APPLICATION FOLLOW FCI APPLICATION SPECIFICATION GS-20-033 LEADFREE SOLDER BALLS WILL NOT SOLDER PROPERLY IN A LEADED SOLDER PROCESS DUE TO A HIGHER REFLOW TEMPERATURE, LEADFREE PRODUCT IS THEREFORE NOT BACKWARDS COMPATIBLE WITH LEADED OR SOME SOLDERING APPLICATIONS. REFERENCE FCI APPLICATION SPECIFICATION.

(8) THIS PRODUCT MEETS THE EUROPEAN UNION DIRECTIVES AND OTHER COUNTRY REGULATIONS AS DESCRIBED IN GS-22-008. PRODUCT MEETING WITH THIS DIRECTIVE IS IDENTIFIED IN THE LOT CODE NUMBER MARKED ON EACH PART BY HAVING AN "X" IN THE SEVENTH CHARACTER POSITION.

| | | | | | | | | | | | | | | | | | | | |
|-------------|---------|----------------|------|------------|---------------------|--|--|---------------------------------------|---|---|--------|----------|--|-----------|-----|---|-------|------|--|
| mat'l code | | | | SEE NOTE 1 | | | | tolerances unless otherwise specified | | | | CUSTOMER | | | |  www.fciconnect.com | | | |
| ltr | ecr no. | dr | date | linear | 0.X ±0.3 | | | | projection  | title GIG-Array 13mm PLUG ASSY. 200 SIG. POS. | | | | | | | | | |
| D | - | - | - | | 0.XX ±0.10 | | | | | | | | | | | | | | |
| | | | | | 0.XXX ±0.050 | | | | | | | | | | | | | | |
| | | | | angles | 0° ±2° | | | |  scale 1:1 | product family | | | | GIG-Array | | | | code | |
| | | | | dr | T.BRUNGARD 06/20/03 | | | | | size | dwg no | | | | 213 | | | | |
| | | | | enrg | M.STRAWSE 06/20/03 | | | | | 10030626 | | | | | | | | | |
| | | | | chr | M.STRAWSE 06/20/03 | | | | | | | | | | | | | | |
| | | | | appd | M.STRAWSE 06/20/03 | | | | | | | | | | | | sheet | | |
| sheet index | | revision sheet | | | | | | | | | | | | | | | | | |



This document is the property of and embodies CONFIDENTIAL and PROPRIETARY information of FCI. No part of the information shown on this document may be used in any way or disclosed to others without the written consent of FCI. Copyright FCI.