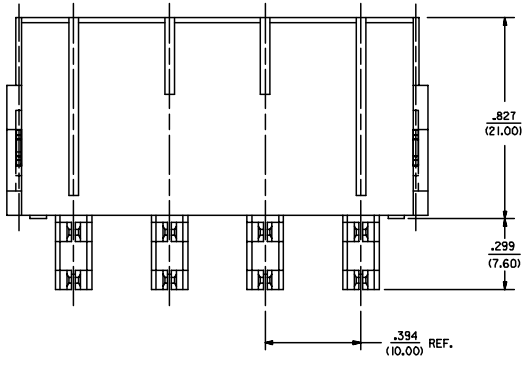
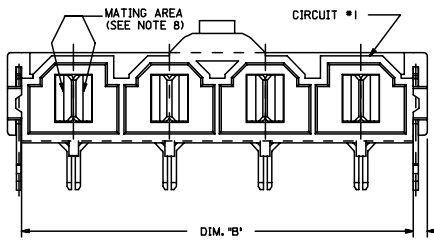


ITEM NUMBER	CKT. SIZE	DIM. 'A'	DIM. 'B'	DIM. 'C'	TERMINAL PLATING
42820-2212	2	.138/(3.50)	.823/(20.90)	.071/(1.80)	
42820-2222	2	.201/(5.10)	.823/(20.90)	.102/(2.60)	
42820-2232	2	.201/(5.10)	.823/(20.90)	.134/(3.40)	
42820-2239	2	.201/(5.10)	.823/(20.90)	.134/(3.40)	
42820-2242	2	.327/(8.30)	.823/(20.90)	.259/(6.58)	
42820-3212	3	.138/(3.50)	1.217/(30.90)	.071/(1.80)	
42820-3222	3	.201/(5.10)	1.217/(30.90)	.102/(2.60)	
42820-3232	3	.201/(5.10)	1.217/(30.90)	.134/(3.40)	
42820-3242	3	.327/(8.30)	1.217/(30.90)	.259/(6.58)	
42820-4212	4	.138/(3.50)	1.610/(40.90)	.071/(1.80)	OVERALL TIN
42820-4222	4	.201/(5.10)	1.610/(40.90)	.102/(2.60)	
42820-4232	4	.201/(5.10)	1.610/(40.90)	.134/(3.40)	
42820-4242	4	.327/(8.30)	1.610/(40.90)	.259/(6.58)	
42820-5212	5	.138/(3.50)	2.004/(50.90)	.071/(1.80)	
42820-5222	5	.201/(5.10)	2.004/(50.90)	.102/(2.60)	
42820-5232	5	.201/(5.10)	2.004/(50.90)	.134/(3.40)	
42820-5242	5	.327/(8.30)	2.004/(50.90)	.259/(6.58)	
42820-6212	6	.138/(3.50)	2.389/(60.90)	.071/(1.80)	
42820-6222	6	.201/(5.10)	2.389/(60.90)	.102/(2.60)	
42820-6229	6	.201/(5.10)	2.389/(60.90)	.102/(2.60)	
42820-6232	6	.201/(5.10)	2.389/(60.90)	.134/(3.40)	
42820-6242	6	.327/(8.30)	2.389/(60.90)	.259/(6.58)	
42820-2332	2	.201/(5.10)	.823/(20.90)	N/A	
42820-2342	2	.327/(8.30)	.823/(20.90)	N/A	
42820-2213	2	.138/(3.50)	.823/(20.90)	.071/(1.80)	
42820-2223	2	.201/(5.10)	.823/(20.90)	.102/(2.60)	
42820-2233	2	.201/(5.10)	.823/(20.90)	.134/(3.40)	
42820-2243	2	.327/(8.30)	.823/(20.90)	.259/(6.58)	
42820-3213	3	.138/(3.50)	1.217/(30.90)	.071/(1.80)	
42820-3223	3	.201/(5.10)	1.217/(30.90)	.102/(2.60)	
42820-3233	3	.201/(5.10)	1.217/(30.90)	.134/(3.40)	
42820-3243	3	.327/(8.30)	1.217/(30.90)	.259/(6.58)	
42820-4213	4	.138/(3.50)	1.610/(40.90)	.071/(1.80)	SELECT GOLD
42820-4223	4	.201/(5.10)	1.610/(40.90)	.102/(2.60)	
42820-4233	4	.201/(5.10)	1.610/(40.90)	.134/(3.40)	
42820-4243	4	.327/(8.30)	1.610/(40.90)	.259/(6.58)	
42820-5213	5	.138/(3.50)	2.004/(50.90)	.071/(1.80)	
42820-5223	5	.201/(5.10)	2.004/(50.90)	.102/(2.60)	
42820-5233	5	.201/(5.10)	2.004/(50.90)	.134/(3.40)	
42820-5243	5	.327/(8.30)	2.004/(50.90)	.259/(6.58)	
42820-6213	6	.138/(3.50)	2.389/(60.90)	.071/(1.80)	
42820-6223	6	.201/(5.10)	2.389/(60.90)	.102/(2.60)	
42820-6233	6	.201/(5.10)	2.389/(60.90)	.134/(3.40)	
42820-6243	6	.327/(8.30)	2.389/(60.90)	.259/(6.58)	



**LEGEND:**

A-42820 -

CIRCUIT SIZE (2-6)

**MOUNTING OPTION**

1 = FLANGES (SEE DWG. SDA-42820-1\*\*)

2 = RETENTION CLIP

3 = NO RETENTION CLIP

**P.C. BOARD THICKNESS**

1 = .062/(1.57) NOMINAL

2 = .093/(2.36) NOMINAL

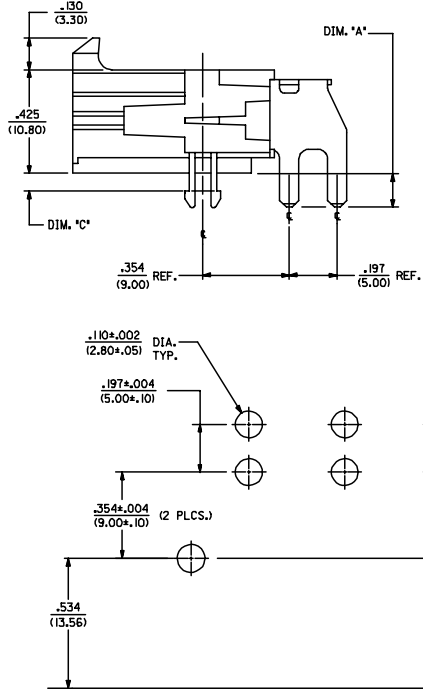
3 = .125/(3.18) NOMINAL

4 = .250/(6.35) NOMINAL

**PLATING**

2 = OVERALL TIN OVER NICKEL

3 = SELECT GOLD IN CONTACT AREA  
SELECT TIN ON SOLDER TAILS  
OVER NICKEL



**NOTES:**

1) HOUSING MATERIAL: 30% GLASS-FILLED NYLON 4/6, U.L. 94V-0, COLOR: BLACK.

2) TERMINAL MATERIAL: ALLOY 151.

3) PART MATES WITH MOLEX RECEPTACLE #42816-\*\*\*2 WITH TPA.

4) PART IS DESIGNED IN METRIC.

5) AN 'X' IN FRONT OF THE ITEM NUMBER INDICATES THE PART IS NOT TOOLED.

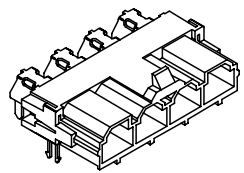
6) TERMINAL PLATING: 2 = .000100/(.00254) MIN. \*TIN OVER .000050/(.00127) MIN. NICKEL.  
3 = .000030/(.00076) MIN. SELECT GOLD IN CONTACT AREA.  
.000100/(.00254) MIN. SELECT \*TIN ON SOLDER TAILS  
OVER .000050/(.00127) MIN. NICKEL.

\* THE PRIMARY SHIPPING CARTON WILL BE LABELED  
\* COMPLIANT TO ROHS DIRECTIVE 2002/95/EC  
AND ELY ANNEX II OF DIRECTIVE 2002/95/EC.  
CARTONS WITHOUT THIS LABEL MAY CONTAIN  
PRODUCT WITH TIN-LEAD.

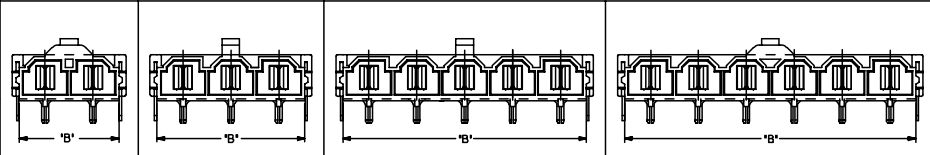
7) PARTS ARE NOT TO BE MATED OR UNMATED WHILE CIRCUITS ARE LIVE.

8) WHEN USING OVERALL TIN PLATED TERMINALS:  
FOR APPLICATIONS INVOLVING VIBRATION AND/OR THERMAL CYCLING, MOLEX STRONGLY  
RECOMMENDS THE USE OF NYE LUBRICANT (NYGOL 760G) ON THE MATING  
SURFACES OF THE TERMINAL.

**RECOMMENDED P.C. BOARD PLATED-THRU HOLE LAYOUT  
(4 CKT. SHOWN FOR REF.)**



**HEADER WITH RT. ANGLE TERMINAL & CLIP  
ISO VIEW**



ADDED -6229 EC NO: UCP2006-1679 DRAWN: JOMERL 2006/01/23 CHKD: JOMERL 2006/01/23 APPR: JOMERL 2006/01/26 REV: F2	<b>QUALITY SYMBOLS</b>   	<b>GENERAL TOLERANCES (UNLESS SPECIFIED)</b> <table border="1"> <tr><th></th><th>MM</th><th>INCH</th></tr> <tr><td>4 PLACES ±</td><td>±.25</td><td>±.010</td></tr> <tr><td>3 PLACES ±</td><td>±.25</td><td>±.010</td></tr> <tr><td>2 PLACES ±</td><td>±.25</td><td>±.010</td></tr> <tr><td>1 PLACE ±</td><td>±.40</td><td>±.015</td></tr> <tr><td colspan="3">ANGULAR ±1/2°</td></tr> </table>		MM	INCH	4 PLACES ±	±.25	±.010	3 PLACES ±	±.25	±.010	2 PLACES ±	±.25	±.010	1 PLACE ±	±.40	±.015	ANGULAR ±1/2°			<b>DIMENSION STYLE</b> IN/MM DRAWN BY: KSM DATE: 1/4/96 CHECKED BY: SF DATE: 1/4/96 APPROVED BY: SF DATE: 1/4/96	SCALE: 4:1 DESIGN UNITS: METRIC THIRD ANGLE PROJECTION	TITLE: <b>RIGHT ANGLE HEADER ASSEMBLY MINIFIT SR. SERIES</b>
		MM	INCH																				
	4 PLACES ±	±.25	±.010																				
	3 PLACES ±	±.25	±.010																				
2 PLACES ±	±.25	±.010																					
1 PLACE ±	±.40	±.015																					
ANGULAR ±1/2°																							
<b>DRAFT WHERE APPLICABLE MUST REMAIN WITHIN DIMENSIONS</b>	MATERIAL NO.: <b>SEE CHART</b>	DOCUMENT NO.: <b>SDA-42820-0002</b>	SHEET NO.: <b>1 OF 1</b>	<b>MOLEX INCORPORATED</b>																			
THIS DRAWING CONTAINS INFORMATION THAT IS PROPRIETARY TO MOLEX INCORPORATED AND SHOULD NOT BE USED WITHOUT WRITTEN PERMISSION																							
© 1996 MOLEX INCORPORATED																							