

5

4

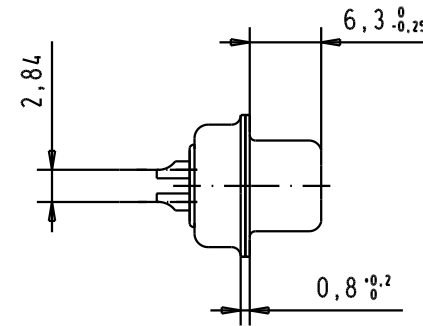
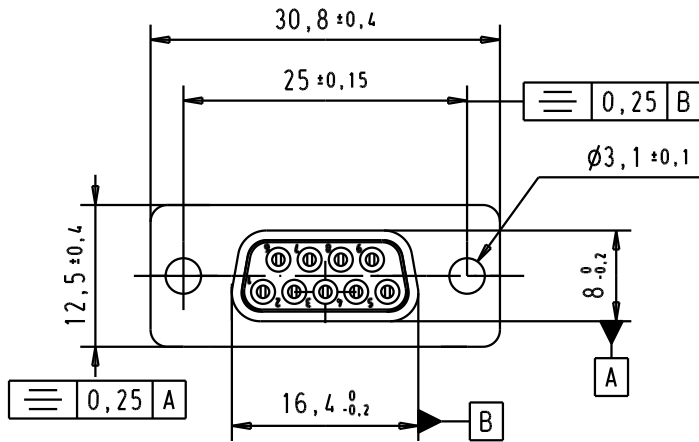
3

2

1

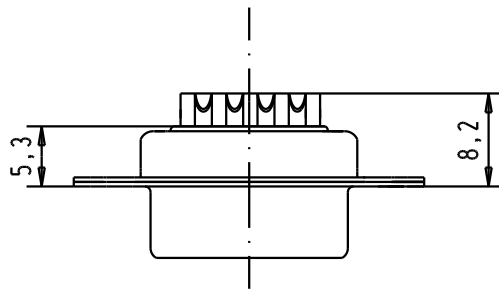
SPECIFICATION

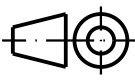

Mating Cycles	500
Filter type	C
Capacitance	3900pf \pm 20%
Working Voltage	100v
Current Rating	7.5A
Insulation Resistance	>1G Ω



Solder bucket for AWG 20

FREQUENCY (MHz)	ATTENUATION (dB)
5	6dB
10	11dB
50	25dB
100	35dB
500	35dB
1000	32dB



				Dot.	Name	 All Dim. in mm Orig. Size DIN A 4	D-Sub, female, straight 9 Poles, with turned solder bucket, fixing hole	Me ² Ms Lab/ Scale 1.5:1
			Detail.	8-JUL-02	CV			
			Insp.					
			Stand.					
32802	11/07/05	JMDR	HARTING EURL F-95972 Paris				TB 09641117240	Blatt/ Page 1 / 1
31058	8-JUL-02	CV						
Mod.	Dot.	Name						

D

C

B

A